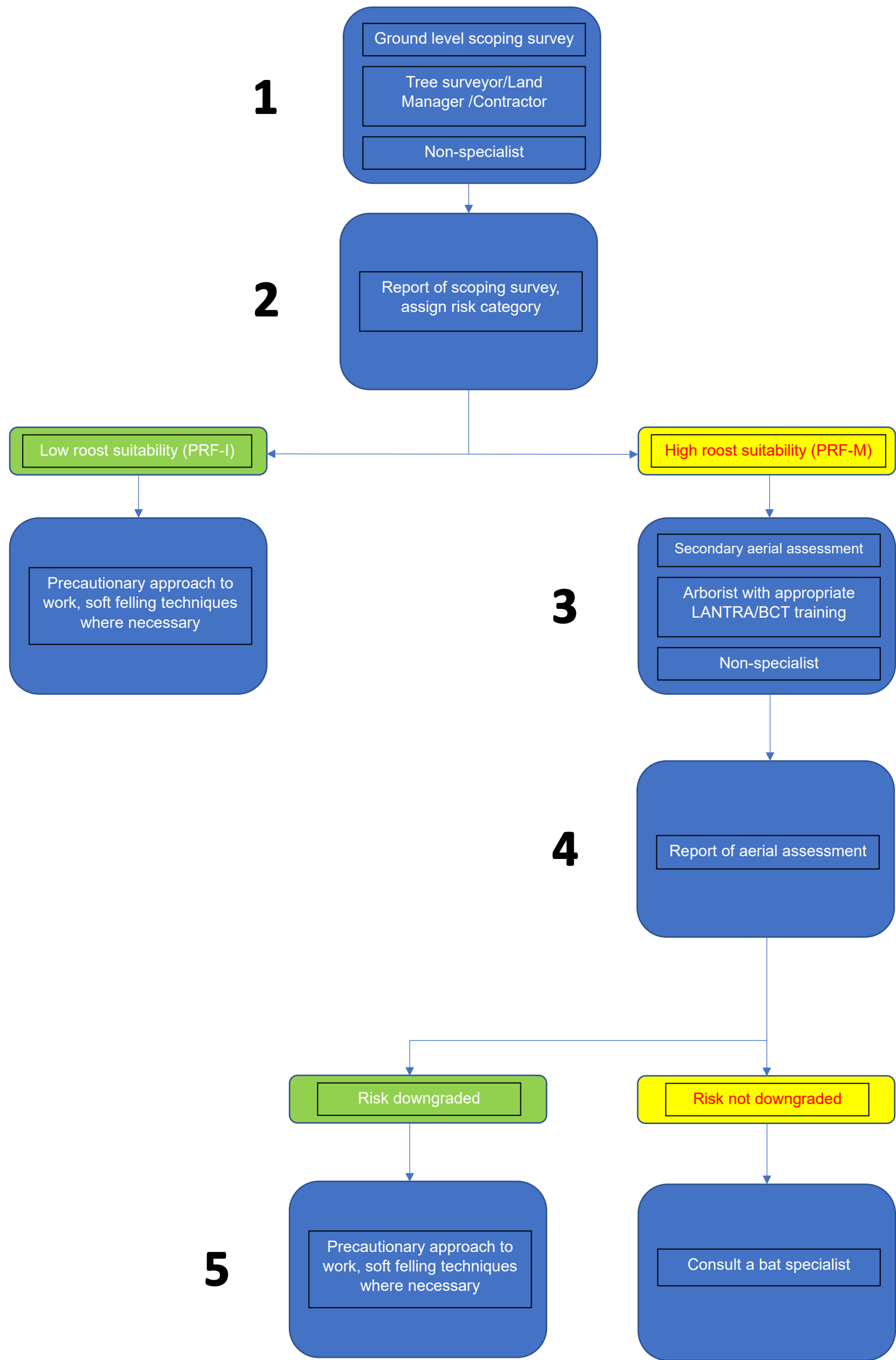


Surveying for Bats in Trees and Woodland – An Approach to Tree Management Operations in the London Borough of Richmond Upon Thames



Bat Conservation Trust

Table 6.2. Guidelines for categorising the potential suitability of PRFs on a proposed development site for bats, to be applied using professional judgement.	
Suitability	Description
PRF-I	PRF is only suitable for individual bats or very small numbers of bats either due to size or lack of suitable surrounding habitats.
PRF-M	PRF is suitable for multiple bats and may therefore be used by a maternity colony.