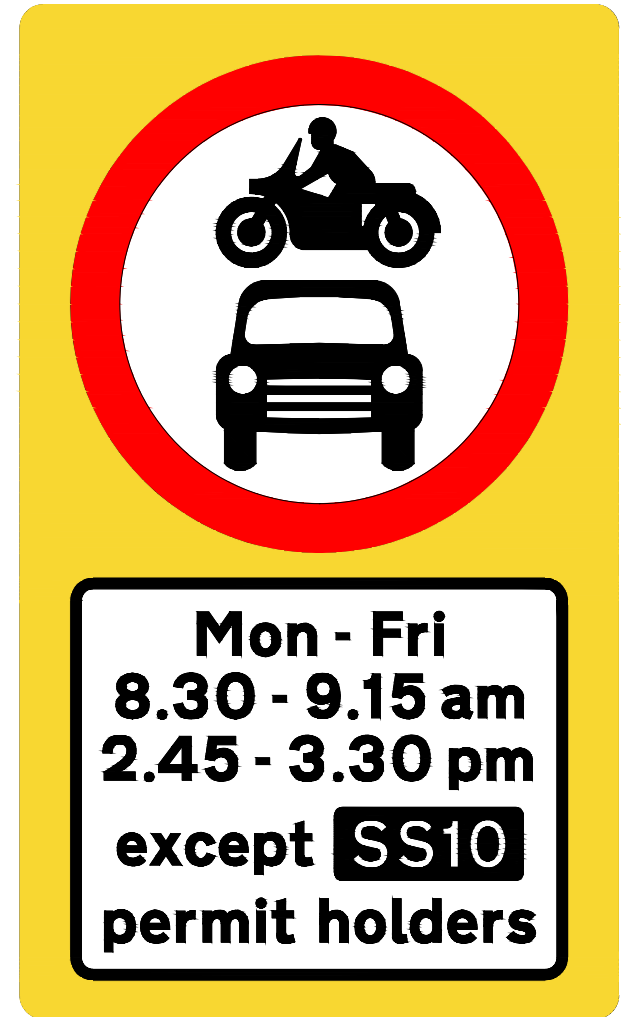
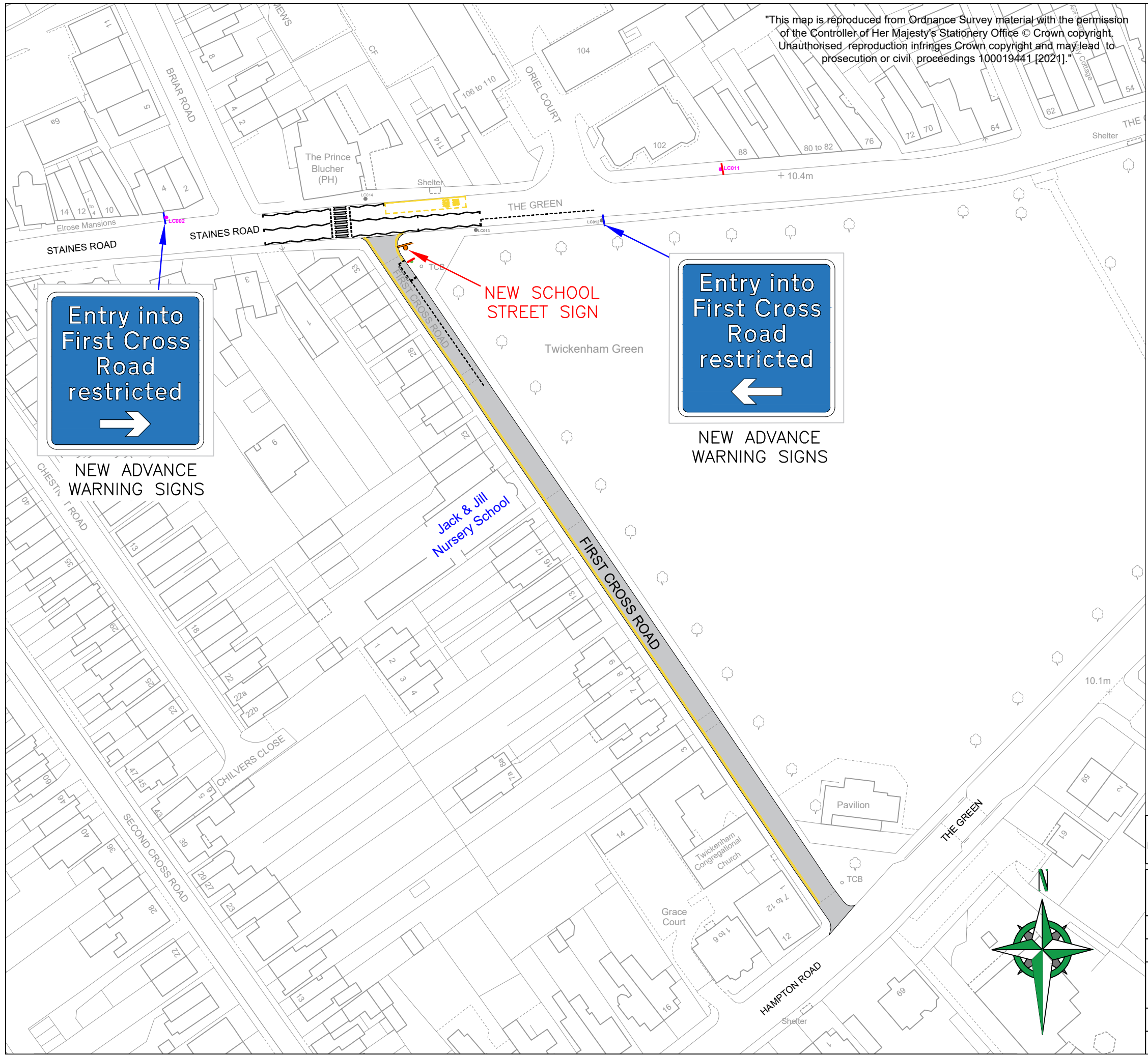
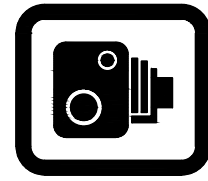


"This map is reproduced from Ordnance Survey material with the permission of the Controller of Her Majesty's Stationery Office © Crown copyright. Unauthorised reproduction infringes Crown copyright and may lead to prosecution or civil proceedings 100019441 [2021]."



DETAIL OF NEW SCHOOL STREET SIGNS



CAMERA ENFORCEMENT SIGNS MOUNTED CENTRALLY BENEATH NEW SS SIGN



NEW SS SIGN ON NEW POST



EXTENTS OF SCHOOL STREET

B REVISION	FOR COMPLIANCE AMENDMENT	JD 24/11/21 DRAWN BY AND DATE	JD 24/11/21 DESIGNED BY AND DATE	LL/LF 14/12/21 CHECKED BY AND DATE	LF 14/12/21 APPROVED BY AND DATE
			DRAFT	SCALE (AT A3 SIZE)	
			ISSUE	1:1000	
CLIENT		LONDON BOROUGH OF RICHMOND UPON THAMES			
PROJECT		SCHOOL STREETS – PHASE 2			
DRAWING TITLE		JACK & JILL PRE-PREP & NURSERY FIRST CROSS ROAD			
ISSUING OFFICE	TWICKENHAM	DRAWING NUMBER		REVISION	
TELEPHONE	020 88911411	2381-SSP2-GA-SS10		B	

