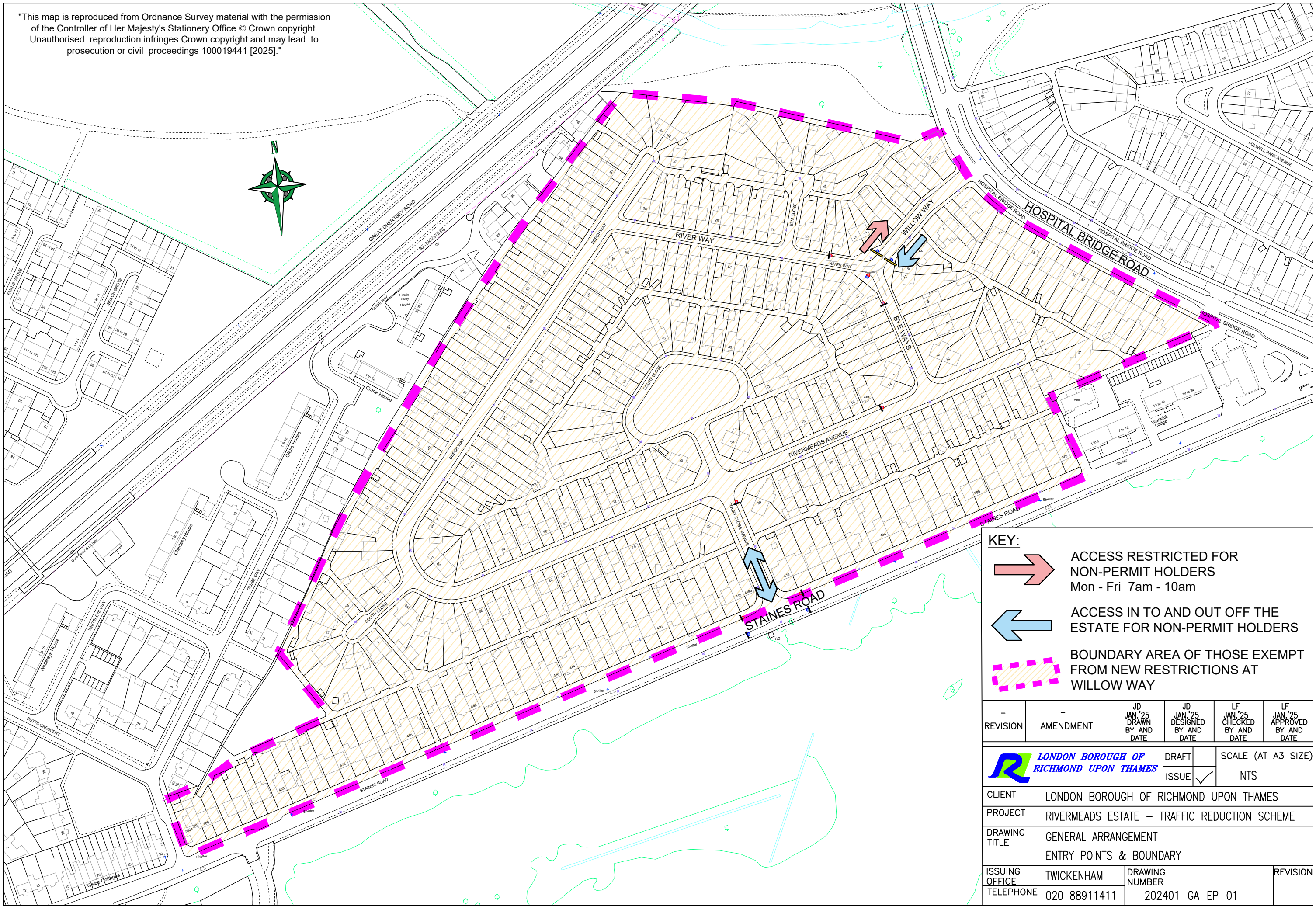
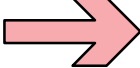


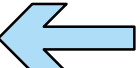
"This map is reproduced from Ordnance Survey material with the permission of the Controller of Her Majesty's Stationery Office © Crown copyright. Unauthorised reproduction infringes Crown copyright and may lead to prosecution or civil proceedings 100019441 [2025]."




KEY:




ACCESS RESTRICTED FOR
NON-PERMIT HOLDERS
Mon - Fri 7am - 10am



ACCESS IN TO AND OUT OFF THE
ESTATE FOR NON-PERMIT HOLDERS



BOUNDARY AREA OF THOSE EXEMPT
FROM NEW RESTRICTIONS AT
WILLOW WAY

-	-	JD JAN.'25 DRAWN BY AND DATE	JD JAN.'25 DESIGNED BY AND DATE	LF JAN.'25 CHECKED BY AND DATE	LF JAN.'25 APPROVED BY AND DATE
REVISION	AMENDMENT				
 LONDON BOROUGH OF RICHMOND UPON THAMES			DRAFT		SCALE (AT A3 SIZE)
			ISSUE	✓	
CLIENT	LONDON BOROUGH OF RICHMOND UPON THAMES				
PROJECT	RIVERMEADS ESTATE – TRAFFIC REDUCTION SCHEME				
DRAWING TITLE	GENERAL ARRANGEMENT				
	ENTRY POINTS & BOUNDARY				
ISSUING OFFICE	TWICKENHAM	DRAWING NUMBER 202401-GA-EP-01			REVISION -
TELEPHONE	020 88911411				