



Grove Gardens (Teddington)

January 2025 – December 2026

Grove Gardens Management Plan 2025-26: Foreword

Grove Gardens is an important asset for local people and visitors. The London Borough of Richmond upon Thames aspires to manage and maintain the park to the highest standards.

This management plan is based on the use of an audit of the park following central government guidance known as PPG 17. This is explained within this document, but the approach is based on common sense. We believe that it is important to get the simple things right. Is the green space clean and tidy? Is the grass cut? Are the trees and shrubs well maintained? Is the graffiti removed effectively and quickly?

Working with local communities to deliver the highest quality of service is a top priority and it is hoped that this document will provide a framework for continuing and improving dialogue. The site will be maintained appropriately, and the local community will be consulted on any proposed changes or improvements to the park's facilities or infrastructure. In particular the borough works closely with the Friends of Grove Gardens. We actively encourage suggestions about all aspects of the park.

Parks Officers, working closely with colleagues in Krinkels UK Ltd and using a partnership approach, regularly monitor Grove Gardens. Members of the local community and Friends of Grove Gardens are also encouraged to let us know their impressions about the level of maintenance as well as their ideas for improving the facilities. It is hoped that the resulting observations and ideas will result in continually improving management and maintenance practises, as well as careful consideration of ideas to improve and maintain the park.

The current financial situation will inevitably have a detrimental effect on the resources available to improve and maintain the borough's parks and open spaces. The tightening of available budgets seems likely for the foreseeable future. The borough will continue to work closely with its partners to maintain high quality standards. In addition, we will need to look for additional ways of funding to maintain and improve the borough's parks, one of our most valuable assets.

Veteran Cedar of Lebanon



Contents	Page
1.0 Introduction	1
2.0 National Context	2
3.0 Relationship to Council Aims & Objectives	4
4.0 Site Description	7
5.0 Audit of Facilities	12
6.0 Vision and Objectives for the Gardens	17
7.0 Management of the Gardens	18
8.0 Achievements and Action Plan	24

1 Introduction

- 1.1 This Management Plan for Grove Gardens provides guidance for the management and any relevant development of the park. It utilises the methodology outlined in the Government's Planning Policy Guidance note 17 (PPG 17) in order to audit the state of provision of features and facilities in the park.

The Plan includes an Action Plan, which should be achievable within the remit of current budgets. The Plan has been drafted for a broad audience interested in the development of the park namely:

- Users of the park and borough residents;
 - The Parks and Open Spaces Service;
 - Other services and departments within the London Borough of Richmond;
 - Elected members, ward councilors and portfolio holders;
 - National agencies;
 - Local businesses; and
 - Partners and contractors.
- 1.2 The Plan will run from January 2025 to December 2026. An interim progress update will be undertaken in January 2026.

2 National Context

- 2.1 Parks are managed areas of the green environment which provide opportunities for a range of formal and informal leisure, passive and active sports, recreation and play.
- 2.2 The significance of parks, open space and countryside provision is clear:
- There are an estimated 27,000 public parks in Britain, visited an estimated 2.6bn times each year (Common Select Committee, 2016).
 - There is an estimated 85,847 hectares of Publicly accessible green space in Great Britain, 73,400 in England. (*Natural capital accounts containing information about green spaces in urban areas*, Office for National Statistics, August 2019)
 - 18.13% of Greater London is designated Public Open Space; with 3.5% Local Parks and Open Spaces & 5.2% Metropolitan Parks (Greenspace information for Greater London CIC 2023).
- 2.3 It is widely recognised that the provision of high quality 'public realm' facilities such as parks can assist in making an area as an attractive place to live and work, and can result in a number of benefits in terms of economic development and

regeneration. A local park can also play a part in promoting healthy living as a place for people to exercise.

2.4 The benefits of safe and accessible parks and open spaces:

Social

- providing safe outdoor areas that are available to all members of the local population
- providing opportunities for community events, voluntary activities and charitable fund raising
- providing easily accessible recreation as an alternative to other more chargeable leisure pursuits
- providing opportunities to improve health and take part in a range of outdoor sports and activities
- providing an educational resource or outdoor classroom

Economic

- adding value to surrounding property, both commercial and residential, thus increasing local tax revenues for public services
- contributing to attracting visitors, including using parks as venues for events
- encouraging tourism into the area
- helping to create an attractive local image
- helping to reduce social exclusion and its associated costs to society

Environmental

- providing habitats for wildlife as an aid to local biodiversity
- helping to stabilise urban temperatures and humidity
- absorbing pollutants in the air and ground water
- providing opportunities for the recycling of organic materials
- providing opportunities to reduce transport use through the provision of local facilities, and by providing walking and cycling routes through urban areas

3 Relationship to Council Aims and Objectives

The London Borough of Richmond recognises that its parks and open spaces contribute to the:

- overall vision and priorities of the Council
- quality of life of local people
- physical, social and economic regeneration of the borough
- greening, attractiveness and increasing biodiversity and quality of green space in the area
- tackling the climate emergency; improving air quality and minimising green house gas emissions
- minimising flood risk and sustainable drainage

Accordingly, this Management Plan and the Parks and Open Spaces Service are guided by and are in agreement with the aims, objectives and principles of the Councils' plans and strategies. These can be found on the webpages below:

[Council policies and plans - London Borough of Richmond upon Thames](#)

[Draft Local Plan: Submission - London Borough of Richmond upon Thames](#)

[Parks and open spaces policies and plans - London Borough of Richmond upon Thames](#)

[Playing Pitch and Outdoor Sport Assessment 2023 & Playing Pitch and Outdoor Sport Strategy 2023](#)

3.1 **Parks and Open Spaces Strategy**

Richmond borough has the largest area of public open space per head of population of any London borough. The Council has a local and national reputation for quality and leadership in the delivery of excellent parks. To ensure the quality of our parks and open spaces remains at a high level, following public consultation, we developed a series of strategic principles by which the parks will be managed:

1. Parks and Open Spaces will be a sustainable legacy for future generations.
2. Parks and Open Spaces will continue to define our borough.
3. Parks and Open Spaces will enrich the life, health and wellbeing of residents and visitors.
4. The Council will lead in the delivery of excellent Parks and Open Spaces services.
5. Parks and Open Spaces will offer positive experiences to all visitors.
6. Through innovation, the future development of Parks and Open Spaces services will be ensured.
7. Increased community participation in Parks and Open Spaces will be encouraged and supported.

8. Parks and Open Spaces will be celebrated as centres of excellence.

The current strategic principles are being reviewed and will be consulted on and updated in spring 2024.

3.3 **Local Biodiversity Action Plan for Richmond**

The main aims of the plan are:

- To conserve and where possible enhance Richmond's variety of habitats and species, in particular those which are of international or national importance, are in decline locally, are characteristic to Richmond or have particular public appeal, which can raise the profile of biodiversity
- To ensure that Richmond residents become aware of, and are given the opportunity to become involved in conserving and enhancing the biodiversity around them
- To raise awareness and increase stakeholder involvement in maintaining and where possible, enhancing species and habitats of importance

3.4 **Parks Improvement Programme**

The Council have a commitment to continued improvement in our Parks and Open Spaces by improving existing infrastructure and developing and installing new facilities. The Council continues to have a cyclical investment program to ensure that parks and playgrounds are up to standards, this includes £300k a year for park improvements and £150k for play. One aim of the management plan is to maintain the gains that we have achieved in previous years.

The Council list all major improvement projects on our webpage, which can be found here:

[Latest parks updates - London Borough of Richmond upon Thames](#)

3.3 **Local Biodiversity Action Plan for Richmond**

The main aims of the Plan are:

- To conserve and where possible enhance Richmond's variety of habitats and species, in particular those which are of international or national importance, are in decline locally, are characteristic to Richmond or have particular public appeal, which can raise the profile of biodiversity
- To ensure that Richmond residents become aware of, and are given the opportunity to become involved in conserving and enhancing the biodiversity around them
- To raise awareness and increase stakeholder involvement in maintaining and where possible, enhancing species and habitats of importance

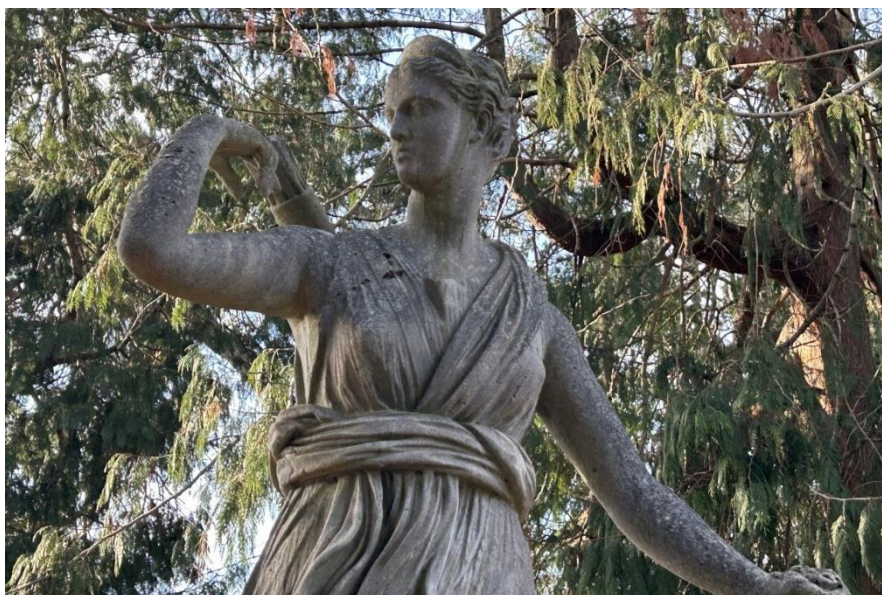
The Local Biodiversity Action Plan can be found online here:
https://habitatsandheritage.org.uk/wp-content/uploads/2020/10/Biodiversity-Action-Plan-Richmond_compressed.pdf

4 Site Description

4.1 Outline History of Grove Gardens

Grove Gardens is on the site of The Grove, an 18th-century house, designed by William Chambers for Moses Franks. It was later the home of John Walter, founder of The Times. The house was demolished in 1920 and replaced by a cottage housing estate built by the Royal Dutch Shell Company. The park itself was sold to Twickenham Borough Council. The statue of Diane de Versailles (Diana with a Stag), Domenico Brucciani, artificial stone c1910. A rare example of Brucciani's outdoor sculpture when the Brucciani business was run by Paul Joseph Ryan at Goswell Road.

Diana – Goddess of the hunt sculpture



4.2 General Information

4.2.1 Land Tenure

The site is owned by and managed by the London Borough of Richmond upon Thames.

4.2.2 Location

Grove Gardens is located between Grove Gardens and The Grove in Teddington.

4.2.3 Access

As a free and open facility Grove Gardens provides fully inclusive access to local residents and visitors to the area. Pedestrians and those arriving by train and bus and car can currently access the site which is open between dawn and dusk.

4.2.4 Local Transport

Train: Grove Gardens is approximately 12 minutes' walk from Teddington Station station, on the overground line from Waterloo.

Bus: The R68 runs down Twickenham Road a 3min walk away.

Car: There is limited roadside parking Grove Gardens and The Grove.

Cycle: Cycle racks are available on site.

4.2.5 Landscape & Topography

Grove gardens is a flat site 1.6 acre in size. The area is flat and has hedging and shrubbery around the perimeter and a number of veteran fir trees and a large cedar of Lebanon.

4.2.6 Listed Historic Buildings

There are no listed buildings within the park.

4.2.7 Ecology

Mostly amenity greenspace, the site's interest is mainly in the mature trees, hedges and Pollinator friendly planting schemes

Tea room and view of trees



4.2.8 Facilities

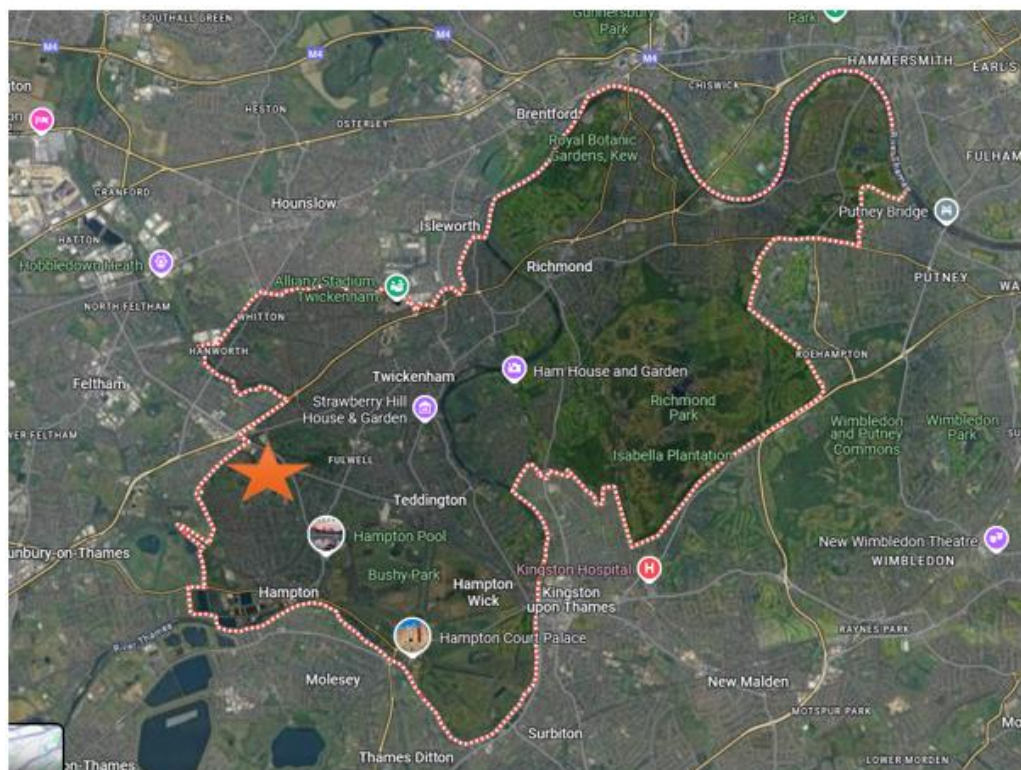
The following facilities are available in Grove Gardens:

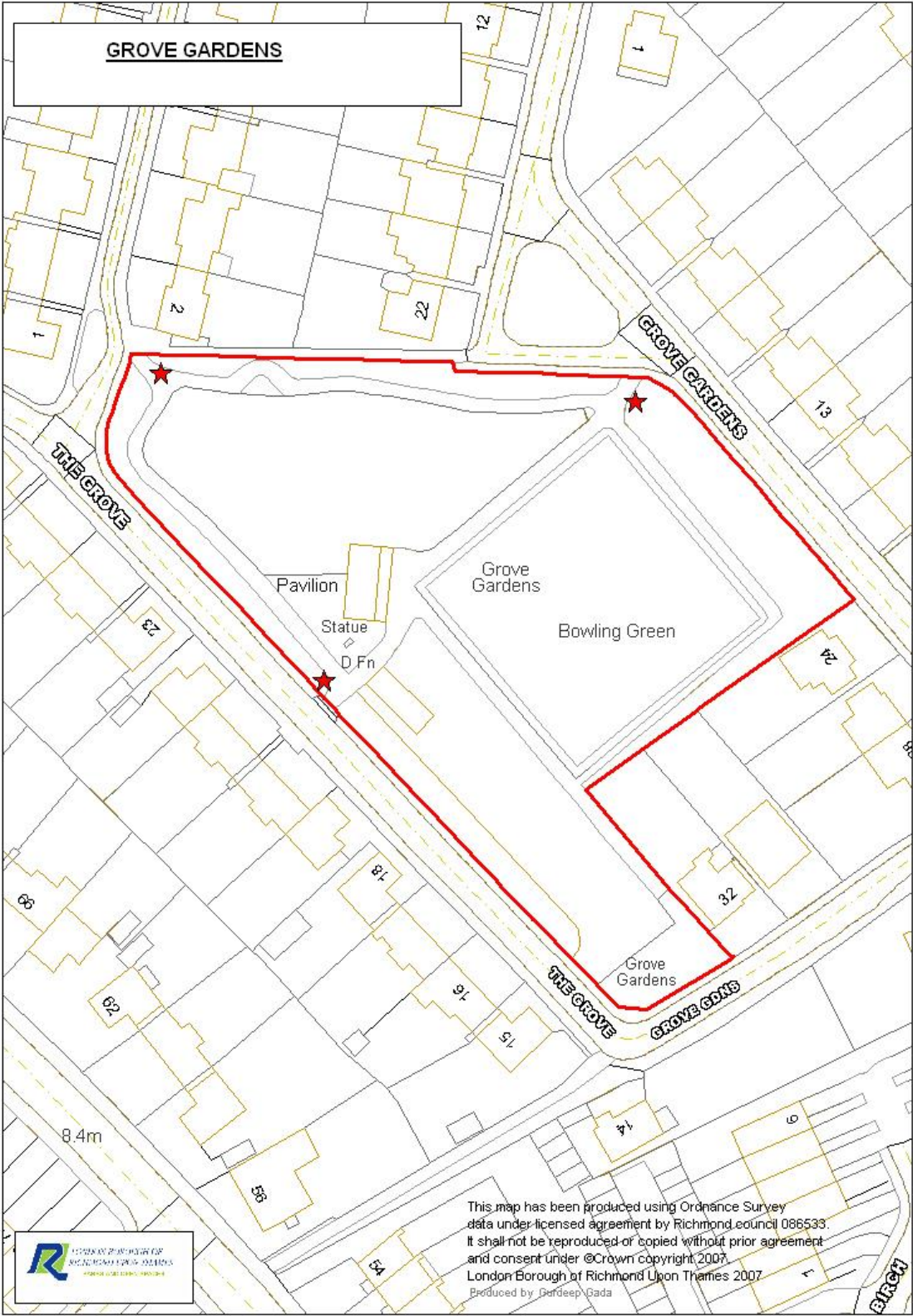
- Bowling Green
- Cycle stands
- Litter bins
- Benches
- Bulb areas
- Shrub beds

4.2.9 Maps and Plans

On the following pages, please find:

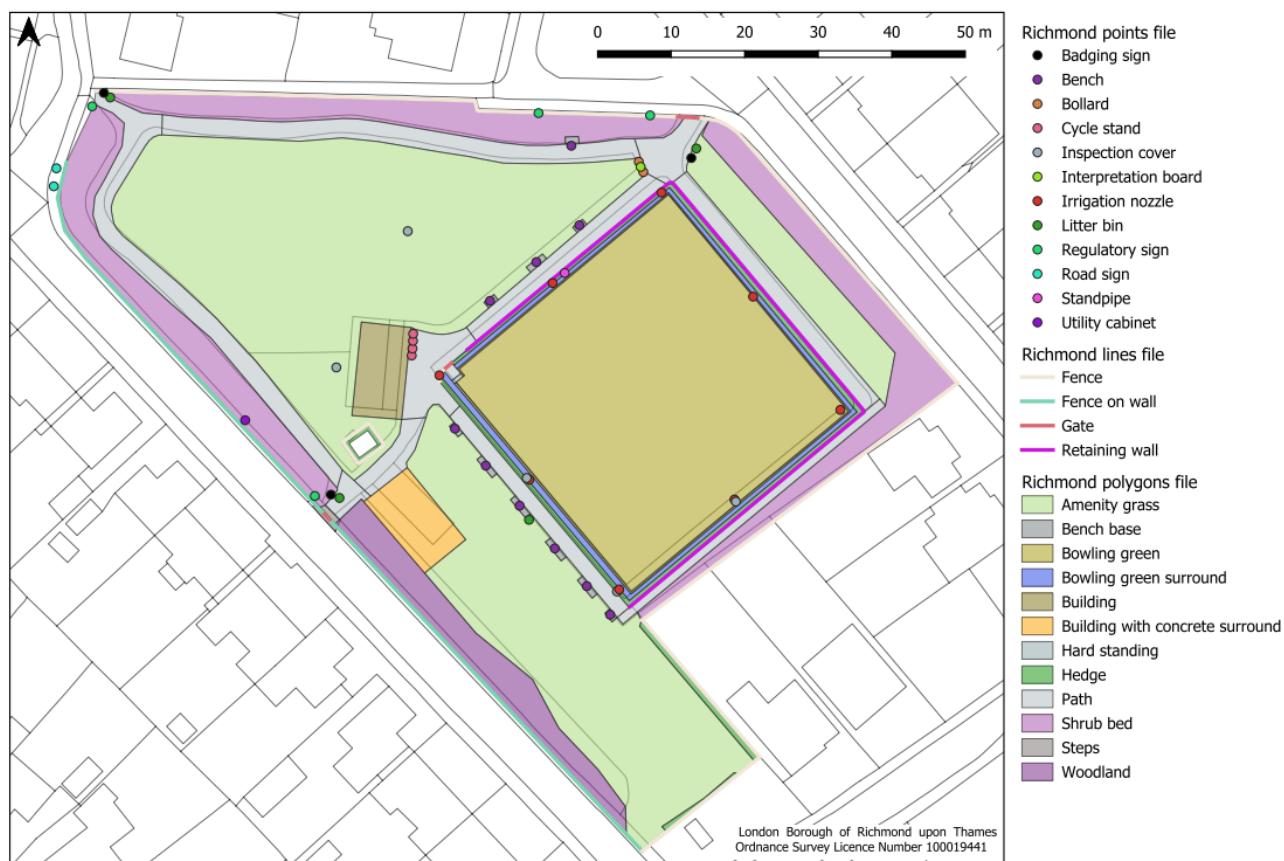
- Aerial photo of location within the borough
- Plan map of Grove Gardens
- Aerial photo of Grove Gardens
- Asset map of Grove Gardens







Grove Gardens



5 Audit of facilities

5.1 The main reasons for undertaking a local assessment are:

- to plan positively, creatively and effectively in identifying priority areas for improvement and to ensure, as much as possible, that there are appropriate types of parks and open spaces provided
- to work towards ensuring an adequate provision of high quality, accessible green space to meet the needs of the community and to recognise a duty to equality and diversity to provide equally for diverse groups of users
- to identify the gap between current and desired levels of need and demand, quality and quantity of provision
- to assist in achieving standards such as the Green Flag Award.

5.2 Desirable Outcomes of the Local Assessment

A local assessment of green space will enable planning to be effective and achieve key outcomes required by National Policy Planning Framework

These are:

- provision of accessible, high quality park space for sport and recreation that meet the needs of residents and visitors;
- provision of a park that is 'fit for purpose' – the right type in the right place;
- to provide an appropriate balance between new provision and enhancement of existing provision;
- setting locally derived provision standards.

5.2.1 It is intended that this management plan helps to achieve these outcomes in terms of providing an analysis of existing provision and a plan to effectively maintain and, where appropriate, develop the facilities and infrastructure of the park.

5.2.2 In addition, it produces a series of actions which will help to achieve the standards laid down for Green Flag Award parks:

- A welcoming place;
- Healthy, safe and secure;
- Clean and well-maintained;
- Environmental Management;
- Landscape and heritage;
- Community involvement;
- Marketing and communication
- Overall Management.

5.3 **Methodology**

The methodology used was prescribed in the Government's Planning Policy Guideline note 17 (PPG17) for the provision of public open space. This consisted of a review of the following key areas of provision:

- Main entrance;
- Boundaries;
- Roads, paths, cycleways and access;
- Parking;
- Information available;
- Planted areas;
- Grass areas;
- Cleanliness;
- Provision of litter bins;
- Seating;
- Children's play space;
- Sports and recreation;

- Buildings including toilets;
- Health and safety;
- Nature conservation value; and
- Access for people with disabilities.

5.3.1 Main Entrance

There are three entrances onto Grove Gardens: two access sections on Oak Avenue, three gates on Buckingham Road, open access along Tangle Park Road and access via a short alleyway from Morland Close. The two regarded as main entrances are:

- (1) The northern gate is the main gate that opens on to Grove Gardens (Road name).
- (2) The southern western access point opens on to The Grove.
- (3) The Western access point opens up on to Grove Terrace

5.3.2 Boundaries

There are railings and fencing surrounding this site. There is mixed hedging and shrubbery around the site.

5.3.3 Roads, Paths, Cycleways and Access

There are surfaced footpaths linking the all entrance points that runs around the sites perimeter and these are kept under review for surfacing. There are no public rights of way.

5.3.4 Parking

Grove Gardens does not have a public car park. There is no opportunity within this small site to accommodate parking.

Available car parking in the immediate area is limited and located on Grove Gardens and The Grove.

5.3.5 Information

Information relating to Grove Gardens is available on the parks section of the Council's website: www.richmond.gov.uk:

The parks signage is attractive and durable giving appropriate contact details. It uses easily understandable symbols to deter users from inappropriate and anti-social behaviour.

5.3.6 Cleanliness

Part of the contractor's duties is to pick up litter and to ensure that the site is kept clean at all times.

5.3.7 **Planted Areas**

There are a number of shrub and flower beds in Grove Gardens, there are attractive mature fir trees and a large cedar of Lebanon and recently planted trees. These are healthy and well maintained. There are swathes of bulb planting, including daffodils as well as a pollinator friendly scheme planted in spring 2024.

5.3.8 **Scenic Quality**

The park is an attractive open space with fine views across it. It is mostly very natural in its scenic quality and the few facilities do not detract a great deal from this. The hedges and woodland belts soften the impact of surrounding housing.

5.3.9 **Grass Areas**

The amenity grass is in good condition for a busy small site.

The bowling green is maintained to a high standard.

5.3.10 **Provision of Litter Bins**

There appears to be an adequate supply of bins, but this should be monitored.

5.3.11 **Seating**

There are a satisfactory number of seats placed around the bowling green to allow visitors to take a rest.

Memorial bench donated to Grove Gardens



5.3.12 Children's Play Space

There is a no play space in this park, and it is considered inappropriate to the historical setting.

5.3.13 Buildings, including toilets

There are two buildings in the park:

Tea Room and Bowling Pavilion

Bowls Pavilion



5.3.14 Health and Safety

The Council has a generic risk assessment for open spaces which is reviewed each year.

5.3.15 Nature Conservation Value

Whilst the main function of the park is for amenity purposes, there are a number of nature conservation features that have been added such as bird/bat boxes and an insect hotel with more due features such as stag beetle loggeries, to be added later this year. These compliment and support the mature trees and pollinator friendly planting present on site.

As well as having localised nature conservation value, Grove Gardens acts as an important stepping stone between areas of higher nature conservation value such as the Royal Parks and the River Thames. These stepping stones help guide species such as bats and owls between their roosting and foraging locations.

Insect hotel installed 2024 – Made by a local resident and filled with mediums by local children as part of a community day.



5.3.16 Access for people with disabilities

This factor has been included not only to ensure maximum accessibility for those in wheelchairs and for the elderly and the less able-bodied, but also to ensure compliance with the Disability Discrimination Act. Access around Grove Gardens is good by virtue of the surfaced paths. Gates around the site are the conservation “classic” style and are therefore not as accessible as other LBRuT sites.

6 Vision and Objectives for Grove Gardens

6.1 The overall vision for Grove Gardens is to:

“Maintain and improve the park so as to continue to provide a park where there are opportunities for outdoor contemplation, recreation and education in keeping with its urban conservation location”.

6.2 The key objectives for Grove Gardens are:

- To continue to work closely with the Friends group and users of the facilities so as to adequately maintain and improve the facilities;
- To ensure that Grove Gardens is a place that is secure, safe to use and is clean and well maintained;
- To ensure that the management of the landscape maintains the character of the park;
- To ensure that the park is promoted and managed in order to provide a high-quality service for the people using it;

- To continue to encourage and promote community involvement in the management of the park.
- To ensure that the management of the park protects and enhances the biodiversity of the site;

7 Management of Grove Gardens

7.1 Introduction

This section sets out guidelines and general principles to be followed in delivering the vision and objectives outlined above.

7.1.1 Parks Service

The Parks Service is overseen by the Head of Culture, assisted by the Parks Service Manager. It is made up of two teams, the Parks Service also use consultants when needed.

- The Operations team is responsible for liaising with contractors and monitoring the parks. The team includes a Parks Operations Manager, two Parks Officers, an Ecology Policy and Planning Manager, an Ecology Policy and Planning Officer, Allotment Officer and a Parks Support Officer.
- The Arboricultural team is responsible for all street trees and arboricultural work in council-managed parks and open spaces, as well as assisting with planning issues. The team consists of a manager, seven tree officers and a technical support officer.

We value diversity and are committed to delivering a service that puts equality of opportunity as a priority.

Management of the park needs to deliver high standards of maintenance of all aspects of the soft and hard landscaping of the park within existing revenue budgets. Developments have been funded by major borough-wide capital investment Parks Improvement Programmes between 2005 and 2010 and 2012 and 2017. In 2022 Public Realm funding allow improvements in all wards covering – Sports pitches, Outdoor gyms, Playgrounds and pathway access.

7.1.2 Delivery partners

The Council works with the Friends of Grove Gardens in consulting with local people regarding their views of the facilities and any impact that is made on their lives. Continuing this working is a very high priority in relation to the management of the park.

For parks maintenance, a new approach was introduced from April 2013, with services split into eleven separate lots and being delivered through a framework contract. In broad terms maintenance will be carried out by the contractors' operatives who have the necessary skills to achieve high and consistent standards.

As a framework, the contracts will also be available for other authorities and organisations in London and the south-east of England.

Document last modified: 11/06/2024
The Friends of Grove Gardens Bulb Planting session

Saturday 2nd December 2023

11am to 12pm

Please come and support us to plant some of the 300 bulbs donated by The London Borough of Richmond Upon Thames Council.



Contact email – friendsofgrovegardens@gmail.com

Please bring gloves and hand tools to help us plant.



Please do not forget to come in warm clothing.

Poster for community involvement days run by the Friends of Grove Gardens

Parks Term contracts:

Following an open and thorough procurement process that began in spring 2024, the incumbent contractors were appointed to start a 6-year contract in February 2025 for Green Space Management.

This was evaluated by 60% price, 30% non-price and 10% social value.

Green Space Management contract includes, horticulture, sports, play inspection and maintenance, parks infrastructure works and external planting.

Procurement was written in an output style with built-in quality measures and performance indicators and asking qualifying contractors to design excellent services using their knowledge and experience.

The are Framework contracts for Arboriculture Management, Parks Patrol, Events Management and Oak Processional Moth Management were extended and will be re-tendered in 2025-2026.

Relevance to Grove Gardens:

Krinkels Uk Ltd are the Green Space Management contractor undertaking greenspace management (grass cutting, shrubs, hedges, sports bookings and pitch maintenance), Parks Infrastructure Works (hard landscaping, infrastructure and furniture installation, etc.) gate locking operations, plus undertaking play inspection and maintenance. They also undertake parks cleansing alongside existing street cleansing and graffiti removal to create a joined-up operation.

KPS are the arboricultural contractor, working closely with the Council's tree team who undertake inspections and specify works, with Bartlett Tree Experts undertaking Oak Processionary Moth management.

Events in parks are managed by The Event Umbrella, a company who specialise in managing outdoor events in the public sector.

Park patrols are undertaken by Parkguard, a company specialising in education, support services and enforcement in parks and open spaces.

7.2 A Welcoming Place

The following management regimes all play a part in ensuring that Grove Gardens continues to be a welcoming area.

7.2.1 Graffiti removal

As a part of our aim to make the Borough safe, green and clean we are committed to reducing and removing graffiti. The site will be inspected daily for graffiti. The full details of the borough's commitment to the prompt removal of graffiti can be viewed on the LBRuT website www.richmond.gov.uk

There is an agreement with Council's Street Scene Contractor Krinkels UK Ltd to manage the removal of all graffiti within five working days. Where the graffiti is racist or offensive it will be removed within one working day of notification.

7.2.2 Signage

Park signage will be kept clean and will be regularly inspected. Any repairs will be carried out promptly.

7.2.3 Pathways

All paths and hard surfaces will be inspected annually. Any necessary repairs will be carried out as promptly as possible. 'Desire lines' will be assessed for permanent construction.

7.3 Healthy, Safe and Secure

The following management regimes all play a part in ensuring that Grove Gardens continues to be a healthy, safe and secure place.

7.3.1 Community Safety

All contractors working on Grove Gardens undertake an important role in terms of a visible staff presence on Grove Gardens and structure their maintenance work accordingly. All contractors are uniformed and wear highly visible clothing.

7.3.2 Dog fouling

The Council and their contractors make efforts to educate dog owners to be responsible for their dog's waste as the dangers of humans coming into contact with dog faeces are well known.

Signage clearly indicates that dog mess should be picked up and disposed of by those walking their pets.

All general waste bins can be used to dispose of dog waste.

The Council has adopted Public Space Protection Orders relating to Dog Control. These have been renewed in 2023 for a further 3 years. They can be found online here: [Dog Control PSPO \(richmond.gov.uk\)](https://www.richmond.gov.uk/dog-control-pspo)

7.4 Clean and Well Maintained

The following regimes are designed to ensure that Grove Gardens is clean and well maintained.

7.4.1 Grass Maintenance

Grass surfaces within the park are mainly classed as amenity grass. Amenity turf can be described as those areas used for general recreation and formal and informal sports and can include wide-open spaces or those areas planted with trees and shrubs. The height of this grass is kept between 20 and 50mm throughout the year.

The level of maintenance will depend on the level of use, with increased repairs, fertilising, and scarifying of those areas subject to heavy wear. Most repair works to turf will be carried out in the autumn or spring, with areas either re-turfed or seeded.

Grass edges, whether they are against paths, fences or walls will be cut at the same time as the rest of the grass using strimmers in most areas.

7.4.2 Trees

Trees within parks are subject to inspection by suitably qualified and experienced Arboriculturalists, this is in order to identify and remedy any unacceptable risks to people using the sites, an example of this is the prophylactic treatment of oak processionary moth or the removal of trees that are extensively decayed compromising their structural integrity.

Tree pruning is only carried out where necessary for risk management purposes or where formative pruning is necessary; this approach allows Richmond's parks to retain a natural landscape with well-formed specimens. Where there is a particular characteristic by way of species composition, size or natural distribution the Council seeks to maintain this through selecting appropriate replacement and new trees. All tree works are in accordance with our Tree Management Policy.

Richmond Council encourages the Friends of Grove Gardens to consider the tree population within parks and to communicate with the parks and open spaces team in order to make improvements and ensure that there is continuity in the way that the trees are managed.

Grove Gardens contains 49 trees, the site these include - Pinus nigra nigra (Austrian Pine), Thuja (Red cedar), Chamaecyparis lawsoniana (Lawsons Cypress), Prunus cerasifera (Cherry Plum), Cedrus libani (Cedar of Lebanon) and Liquidambar styraciflua (sweetgum)

7.4.3 Cleansing

The collection of litter is extremely important in maintaining the appearance of the Green and has a direct effect upon how people treat and respect the site. Litter is collected on a daily basis before 10.30am each day by the park cleansing contractors.

The park cleansing contractors carry out litter picking, emptying of litterbins and the sweeping/blowing of paths. This applies to all surfaces, paths, lawns and beds.

When Grove Gardens has high numbers of visitors and large amounts of litter is expected the parks cleansing contractors will carry out additional visits to empty the bins. The full litter bags will be collected and removed from the site on the same day. In addition, the bins are cleaned and disinfected quarterly to avoid an unsightly accumulation of dirt.

7.4.4 Park Furniture and Fittings

The grounds maintenance contractors ensure that all furniture is clean and will check benches, notice boards and bins on a regular basis. Items will be cleaned on a monthly basis or more frequently when heavily used. Repairs will be requested by contractors on a Defect Report and carried out promptly. Any single replacement or repair will match the existing furniture so that the style of the seat remains consistent.

7.4.5 Hard Surfaces

Hard surfaces will be kept clean with litter swept from surfaces regularly by the grounds' maintenance contractor.

Hard surfaces will be maintained in a weed free state with spot treatment weed spraying between March and November. Paths will be kept in a good state of repair and all paths being inspected annually and any repairs ordered to be carried out between March and November.

Drains and gulleys are inspected regularly.

7.4.6 Sports Facility Maintenance

The only sports facility within the Gardens is the bowling green.

Bowling Green maintenance

- Swish/drag brush green daily to remove dew
- Mow green 8-10mm weekly, lower height of cut by 2mm increments at weekly intervals until down to 5mm
- Apply moss killer if required (Allow 7 days after treatment before scarifying)
- Scarify green in two directions, overseed and lightly top dress where needed

- Apply Spring/Summer fertilizer
- Roll green with 150 - 250kg roller when required
- Clean ditch of debris as required
- Trim edging of green when required

The Teddington bowls club is that it moved to its present Grove Gardens site in the 1930s from a small bowls rink near Teddington Station. The green is used from late April to end-September with about 14 home matches against other Clubs, six one-day competitions and a weekly practice session on Wednesdays. There are also intra-club knockout competitions culminating in a Finals Weekend on the first weekend of September. We compete in the Richmond and Barnes Bowls League, which involves playing annual matches against the other seven League member clubs ranging from West Ealing to Putney. The club are required to leave one of our six rinks free at all times for use by members of the public, which in practice is infrequent.

7.5 Environmental Sustainability

The following regimes are designed to ensure that Grove Gardens is managed in a sustainable way.

7.5.1 Recycling

At present we do not have recycling facilities available in this park. However, residents can recycle at some of our other parks and open spaces as well as the cafes situated within them.

7.5.2 Recycling green waste

From a number of points of view, sustainability, environmental considerations and to comply with Local Agenda 21, efforts should be made to recycle green waste. In doing so it is essential to ensure that the recycled waste only includes acceptable material, i.e.

- Grass clippings – these are left in situ in the park
- Grass edgings – reused to fill hollows and dips in the park
- Soft herbaceous cuttings (not woody)
- Broken turfs (after lifting and turfing operations)
- Shredded shrub pruning's – chipped along with tree waste

7.5.2 Pesticides

The use of pesticides at Grove Gardens will be minimised.

An Integrated Weed Management policy has been developed to assist decision-making.

7.6 Community Involvement

This is crucial to the management of park and will continue to be of the utmost importance. The Council works closely with the Friends group and encourages them in their efforts to apply for grants for the park. Most recently the Council assisted in match funding bulbs purchased by the site group to bring more spring interest at the site.

7.6.1 Parks Events

The Council encourages the hire of parts of the area to appropriate organisations. Local ward Councillors are consulted before permission is granted for any new major event. An evaluation process is held after each event.

Events are held in accordance with the Parks and Open Spaces Events Policy found at www.richmond.gov.uk

7.7 Marketing

Promotion and marketing of Grove Gardens is carried out by means of a range of measures to ensure that local people and visitors to the borough are aware of the facility.

7.7.1 Entrance Signage

A new corporate style of signage for Richmond's parks and open spaces was launched in 2007. There is a noticeboard on site used to promote work in the park and activities and events held by the Friends Group.

7.7.2 Internet

Grove Gardens features on the council's website and can be accessed from the following link at:

https://richmond.gov.uk/services/parks_and_open_spaces/find_a_park/grove_gardens

The Friends of Grove Gardens have a webpage here: [Friends of Grove Gardens - Grove Gardens Teddington](#)

7.7.3 General Promotion

In order to create community awareness for all of its facilities the Council regularly produces articles and press releases about activities and facility development.

8 Achievements and Action Plan

8.1 Achievements

Changes and improvements made to Grove Gardens during 2023-24 are listed below:

- In early 2023 a number of bat and bird boxes were installed by our arboricultural contractor KPS.
- In autumn 2024 an insect hotel built by a local individual was installed at site and infilled by local children.
- In early 2024 a pollinator friendly planting scheme was installed next to the main gate for the site to increase biodiversity within the site.
- The Friends of Grove Gardens held a bulb planting event in the winter of 2024. The Parks team supplied smaller logs to allow the group to make log piles around the site to support insects.
- The Parks Team organised the installation of two large stag beetle loggery's within the site in December 2024.
- Following a request from the Friends of Grove Gardens the Parks Team painted and securely mounted the historic bowling roller next to the bowls pavilion in summer of 2024.
- In the autumn of 2025, the historic main gate was replicated and replaced to not impede the conservation area sites appearance.

New loggery



Bowling roller



8.2 **Action Plan**

The following action plan is divided into three sections:

Item of work and location	Year		Timing	Resources
	2025	2026		
Completion of internal compliance works (lighting, fire alarm system etc) to the pavilion building and repainting to the exterior of the building	Y	Y	In progress	Parks, Compliance & Facilities Management Teams
Installation of a classic style drinking fountain.	Y		In Progress	Parks Team, Conservation & Facilities Management Teams
Continue to increase biodiversity within the site. Additional planting, bat and bird boxes.	Y	Y	In progress	Parks Team, Krinkels Uk Ltd and Ecology Team

8.2.1 Development and renewal

The Council is open to the changing needs of the local community with regards to facilities within any of the borough's parks. Grove Gardens has benefited from a number of small enhancements to this site. Other small initiatives and building works are planned.

8.2.2 Community Engagement

The Parks team intends to continue to work with the Friends of Grove Gardens, Teddington Safer Neighbourhood Team and local residents.

We are committed to being receptive to concerns and suggestions voiced individually or through community groups.

8.2.3 Operational Commitments

This is presented in tabular form and includes the most important elements of the day to day maintenance of a park, grass cutting, trees and shrubs, litter collection and maintenance of parks furniture. Monitoring and inspection duties are included. Biodiversity management and initiatives are also included in this section.

Feature	Maintenance Operation	Frequency
Amenity grass	Kept to a height of between 25 to 75mm	As required to maintain length; average 14-16 cuts per year
Wildflower meadow / Pollination Stations	Cutting of meadow – arisings removed from the area	Cut once a year
Bulbs	Cutting of amenity grass where bulbs are planted.	Once the bulbs have flowered and the foliage has died back, roughly 6 weeks after flowering
Tree	Inspection Replacing and expanding variety and stock	Every 4 years As required
Shrub	Kept weed free Mulching Pruning	Every 4-6 weeks in the growing season As required As required, dependent on species
Litter	Litter picking Emptying of bins	Daily Daily
Graffiti	Removal of obscene/offensive words Removal of other	Within 24 hours Within 5 working days
Furniture	Clean and paint Repair/replace	As required As required

Monitoring of contract	Monitoring	Quarterly
Infrastructure inspection	Inspection	Annual
Biodiversity opportunities and actions	Inspection, enhancement when necessary	As required

8.3 Conclusion

This Management Plan is not 'set in stone'. It provides a framework and guidelines that enable the London Borough of Richmond upon Thames to manage the site to a high standard in a sustainable way. The Council is open to the changing needs of local communities and will continue to work closely with local groups and users. The Plan will run from January 2025 to December 2026. An interim progress update will be undertaken in January 2026.