

## School Streets Scheme: Orleans Primary School, Zone 1

There were 29 responses in total to this consultation. This total came from 26 households.

### Question 1

In what capacity are you responding to this consultation?

*NB Respondents were able to select more than one option, so percentages add up to more than 100.*

Response	Number of respondents	Percentage of respondents
<b>TOTAL NUMBER OF RESPONDENTS ANSWERING THIS QUESTION</b>	29	
I am a parent/carer of a student at the school	8	28%
I am a member of staff at the school	0	0%
I live in the local area	27	93%
I work/study in the local area	3	10%
I commute through the local area	1	3%
I am a member of a local group or organisation	0	0%
Other	3	10%

### Question 2

If you have a child at the school or are a member of staff at the school, please tell us your current MAIN mode of transport for getting to/from school:

Response	Number of Respondents	Percentage of Respondents
<b>TOTAL NUMBER OF RESPONDENTS ANSWERING THIS QUESTION</b>	9	100%
Walking	8	89%

Cycling	0	0%
Car / motorcycle	0	0%
Public transport	0	0%
Other	1	11%

### Question 3

Please give us your address and postcode

Live on School Street zone:

	Number of respondents	Percentage of respondents
<b>TOTAL NUMBER OF RESPONDENTS ANSWERING THIS QUESTION</b>	29	%
Live in School Street zone	6	21%
NOT live in School Street zone	23	79%

### Question 4

Please tell us whether or not you support the proposed School Street scheme in this road?

Response	Number of Respondents	Percentage of Respondents
<b>TOTAL NUMBER OF HOUSEHOLDS ANSWERING THIS QUESTION</b>	26	100%
I support it	15	58%
I don't support it	7	27%
I don't know/I have no opinion/households with different opinions	4	15%

### Question 5

Please tell us why you don't support the School Streets scheme in this road?

Analysed by those who do not support the scheme

	Number of respondents	Percentage of respondents
<b>TOTAL NUMBER OF RESPONDENTS ANSWERING THIS QUESTION</b>	8	%
It pushes traffic/congestion onto other nearby roads	7	88%
Parking on nearby roads will be more difficult	5	63%
It will result in more idling cars/pollution in nearby roads	6	75%
To be effective, the scheme should be extended to include an adjoining road/nearby roads	2	25%
I'm against the use of ANPR cameras/fines	3	38%
It will cause problems for deliveries/couriers/tradesmen/regular visitors	5	63%
It's inconvenient for residents of the 'School street'	3	38%
It's inconvenient for parents/some parents are reliant on driving to/from school	1	13%
Other	4	50%

#### Question 6

Please tell us why you support the School Streets scheme in this road?

Analysed by those who support the scheme

	Number of respondents	Percentage of respondents
<b>TOTAL NUMBER OF RESPONDENTS ANSWERING THIS QUESTION</b>	17	%
It improves road safety	15	88%
It keeps the area outside the school gates free of congestion	13	76%
It reduces idling vehicles and improves air quality	14	82%
It encourages walking/cycling to school	14	82%
It aids social distancing	6	35%

It creates a more pleasant/calm atmosphere in the road	13	76%
Other	4	24%

## RESPONDENT PROFILE

Question 8		
Are you:		
Response	Number of Respondents	Percentage of Respondents
<b>TOTAL NUMBER OF RESPONDENTS ANSWERING THIS QUESTION</b>	<b>29</b>	<b>100%</b>
Male	13	45%
Female	15	52%
Prefer not to say	1	3%
Prefer to self-describe	0	0%

Question 9		
What was your age last birthday?		
Response	Number of Respondents	Percentage of Respondents
<b>TOTAL NUMBER OF RESPONDENTS ANSWERING THIS QUESTION</b>	<b>29</b>	<b>100%</b>
19 and under	0	0%
20-24	0	0%
25-34	0	0%
35-44	11	38%

45-54	4	14%
55-64	4	14%
65-74	5	17%
75+	2	7%
Prefer not to say	3	10%

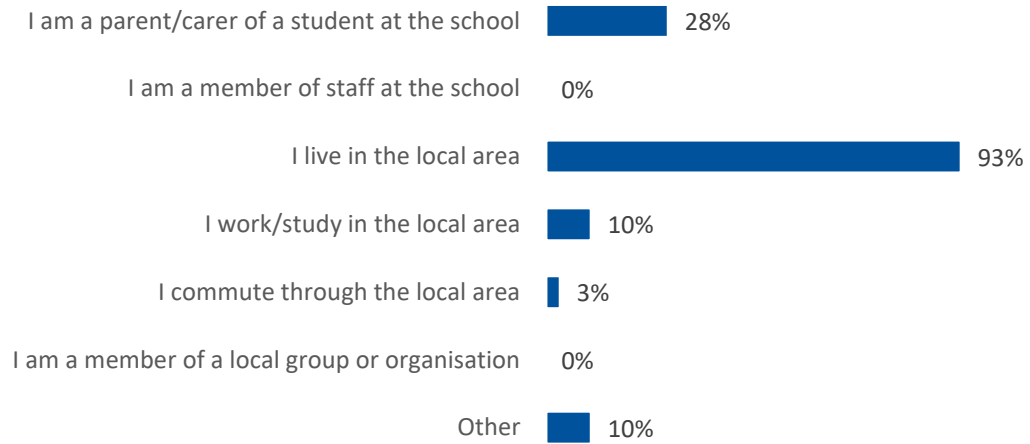
Question 10		
Do you consider yourself to have a disability?		
Response	Number of Respondents	Percentage of Respondents
TOTAL NUMBER OF RESPONDENTS ANSWERING THIS QUESTION	29	100%
Yes	2	7%
No	25	86%
Prefer not to say	2	7%

Question 11		
How would you describe your ethnic group?		
Response	Number of Respondents	Percentage of Respondents
TOTAL NUMBER OF RESPONDENTS ANSWERING THIS QUESTION	29	100%
White	25	86%
Mixed/multiple ethnic groups	0	0%
Asian or Asian British	0	0%
Black/African/Caribbean/Black British	0	0%

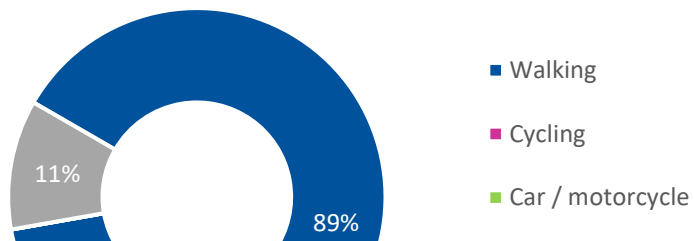
Official

Prefer not to say	4	14%
Other ethnic group	0	0%

**In what capacity are you responding to this consultation?**

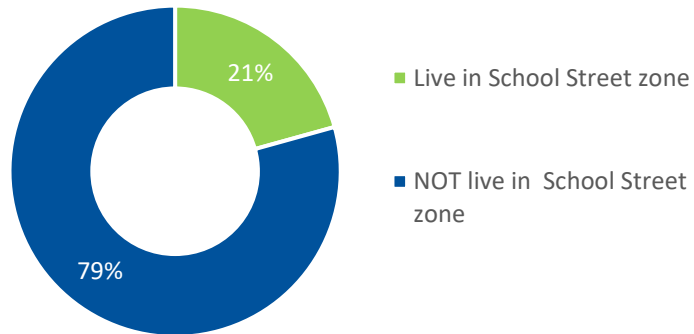


**If you have a child at the school or are a member of staff at the school, please tell us your current MAIN mode of transport for getting to/from school:**

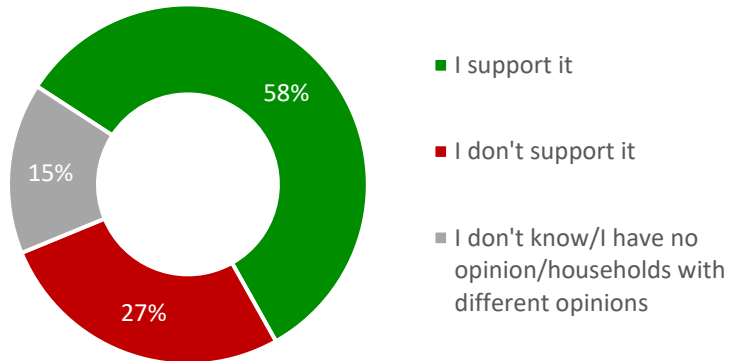




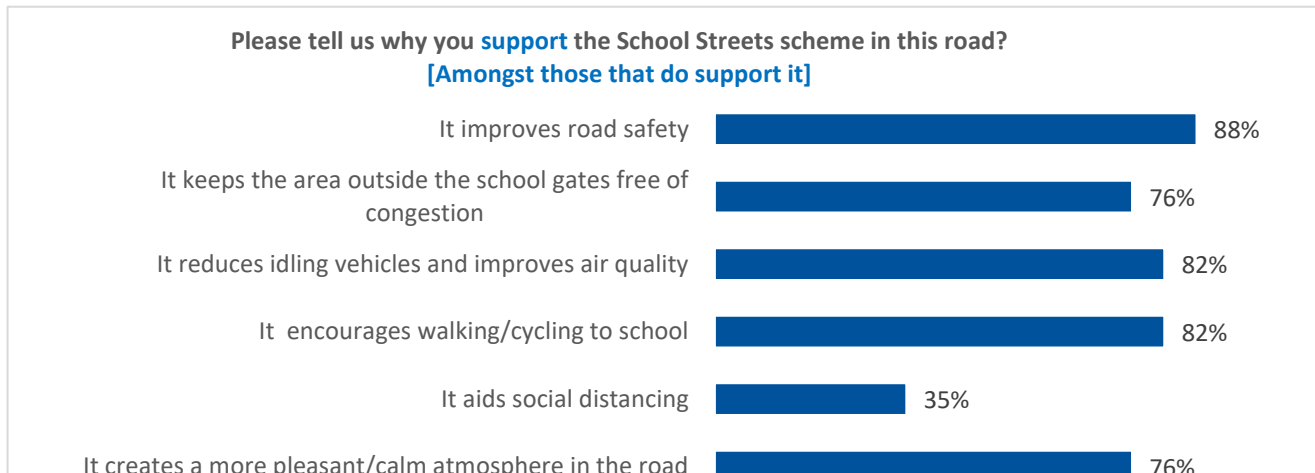
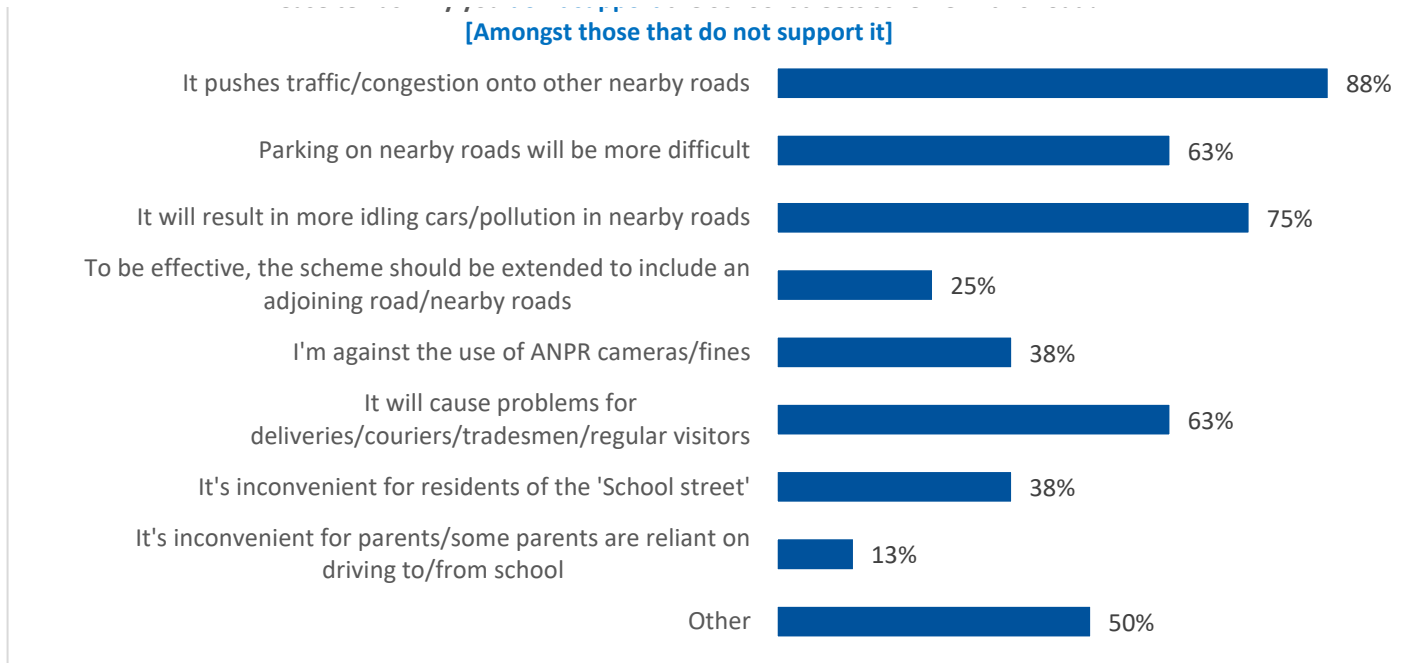
School Street Zone

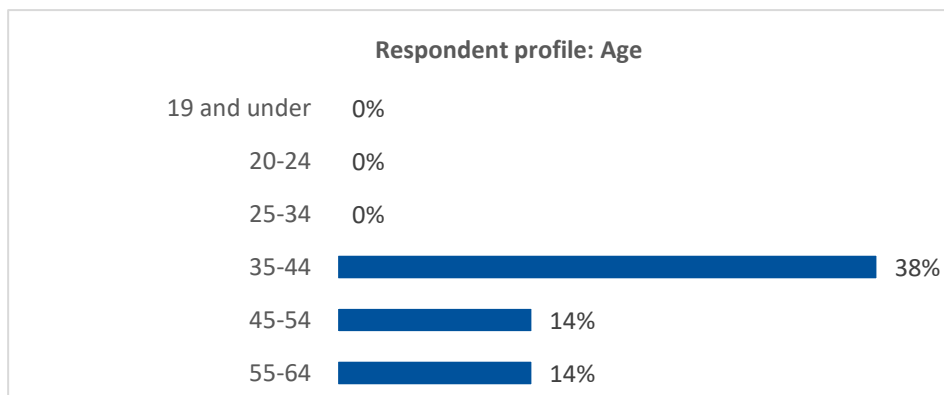
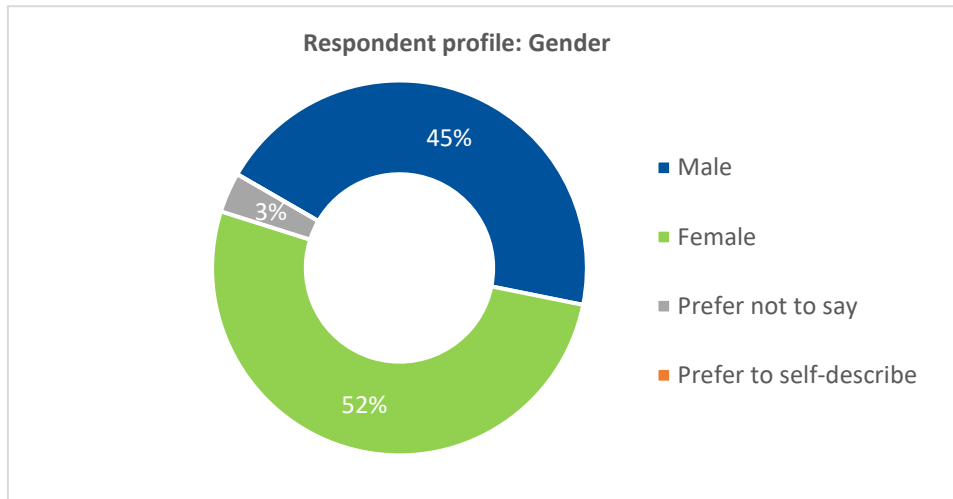


Please tell us whether or not you support the proposed School Street scheme in this road? **HOUSEHOLDS**



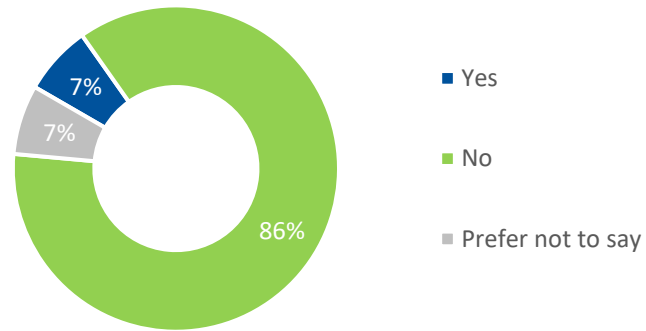
Please tell us why you **don't support** the School Streets scheme in this road?



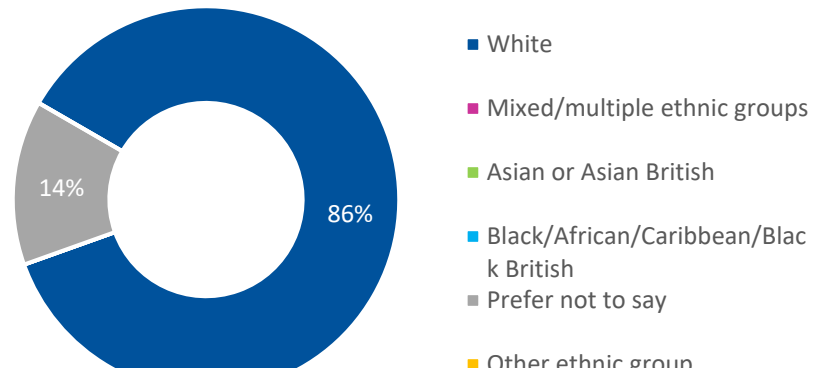




Respondent profile: Do you consider yourself to have a disability?



Respondent profile: Ethnicity



Official

