

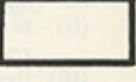


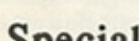


Proposals

Detailed study of the area's special qualities and its problems has divided the area into four distinct elements: the riverside, Barnes Green, residential streets and the shopping centres. The policies and schemes proposed will concentrate on practical schemes of environmental improvement by the Council: identification of sites of townscape importance for future development; planning guidance; and guidance for other Council departments.

~This map and the key summarise the proposals~



Key to existing Local Plan and statutory designation

- 
 Boundary of Conservation Area
- 
 Listed Building
- 
 Building of Townscape Merit
- 
 Area of Special Character
- 
 Local Plan Project
- 
 Metropolitan Open Land



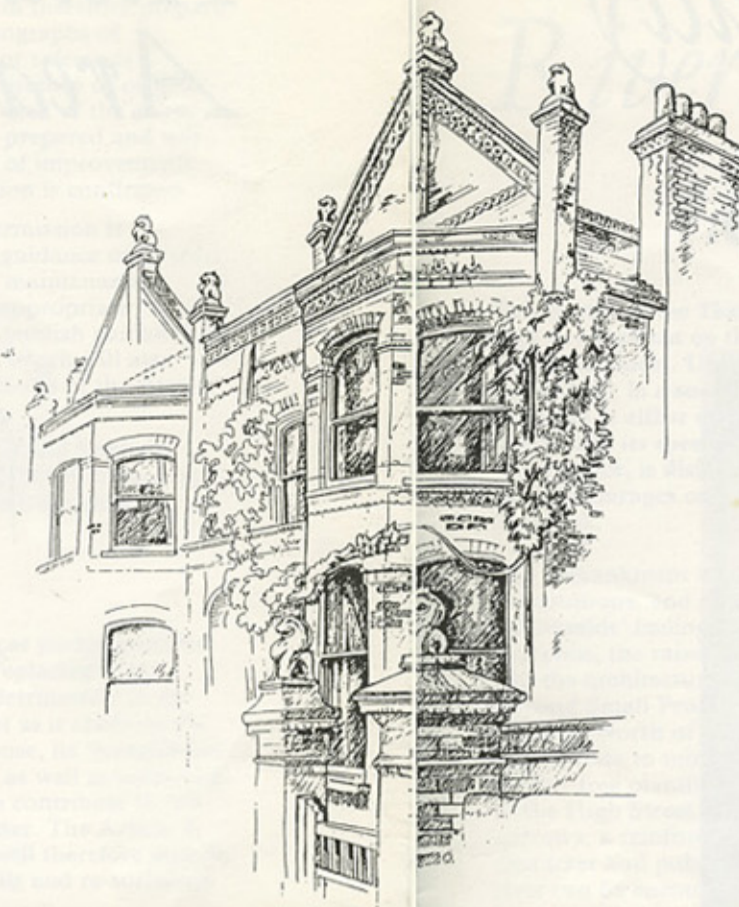
Environmental Improvement Schemes

These are schemes which will be carried out by the Council

In the riverside area, proposed schemes concentrate on the use and appearance of the towpath, footway and flood wall, with proposals for the land north of Small Profits slipway, the towpath opposite the Terrace, Barnes Bridge and the Station entrance.

Improvements proposed include the re-surfacing of the footpaths with gravel, repair and landscaping of the area around the bridge over the Brook, and a management plan for planting.

Traffic and parking improvements are already an objective, but more immediate schemes are to improve landscaped areas to provide a 'green finger' along Church Road and Castelnau.



Article 4 Direction: The 'Lion Houses'

In order to protect the character of the residential streets backing onto The Crescent, where the 'Lion Houses' have a number of unusual architectural features, which deserve protection, the Council will ask the Department of the Environment to confirm an Article 4 Direction which means planning permission will be needed for most alterations.

A separate guidance leaflet is also being published which will offer advice to owners on repair and restoration, and will advise on the implications of the Article 4 Direction if confirmed. There are six groups of houses included.



Sites of Townscape Merit

These are sites where future development is possible, and where the location is such that its appearance is important to the character of the area.



Shopfronts

Groups which justify restoration



Shopfronts

Individual shopfronts which justify retention

The groups and individual frontages are listed overleaf. A separate leaflet is also to be published giving guidance to owners on repair, restoration and applications for planning permission.



Opportunity Site

Site which justifies restoration



Buildings of Townscape Merit

The study proposes additions to the Council's own list of Buildings of Townscape Merit which are important to the character of the area.

Proposals for improvements to roads and traffic management.



Highway scheme