



**Garrick's Temple Lawn
Management Plan
January 2022 – December 2023**



Garrick’s Temple Lawn Management Plan 2022-23: Foreword

Garrick’s Temple Lawn is an important asset for local people and visitors. The London Borough of Richmond upon Thames (the Council) aspires to manage and maintain the park to the highest standards.

This management plan is based on the use of an audit of the park following central government guidance known as PPG 17. This is explained within this document but the approach is based on common sense. We believe that it is important to get the simple things right. Is the green space clean and tidy? Is the grass cut? Are the trees and shrubs well maintained? Is the graffiti removed effectively and quickly?

Working with local communities to deliver the highest quality of service is a top priority and it is hoped that this document will provide a framework for continuing and improving dialogue. The site will be maintained appropriately and the local community will be consulted on any proposed changes or improvements to the park’s facilities or infrastructure. We actively encourage suggestions about all aspects of the park.

Parks Officers, working closely with colleagues in Continental Landscapes and using a partnership approach, regularly monitor the site. Members of the local community are also encouraged to let us know their impressions about the level of maintenance as well as their ideas for improving the facilities. It is hoped that the resulting observations and ideas will result in continually improving management and maintenance practises, as well as careful consideration of ideas to improve and maintain the park.

The current financial situation will inevitably have a detrimental affect on the resources available to improve and maintain the borough’s parks and open spaces. The tightening of available budgets seems likely for the foreseeable future. The borough will continue to work closely with its partners to maintain high quality standards. In addition we will need to look for additional ways of funding to maintain and improve the borough’s parks, one of our most valuable assets.

Contents		Page
1.0	Introduction	1
2.0	National Context	1
3.0	Relationship to Council Aims & Objectives	3
4.0	Site Description	5
5.0	Audit of Facilities	11
6.0	Vision and Objectives for Garrick's Temple Lawn	15
7.0	Management of Garrick's Temple Lawn	15
8.0	Achievements and Action Plan	21

1 Introduction

1.1 This Plan for Garrick’s Temple Lawn provides guidance for the management and any relevant development of the park. It utilises the methodology outlined in the Government’s Planning Policy Guidance note 17 (PPG 17) in order to audit the state of provision of features and facilities in the park.

The Plan includes an Action Plan, which should be achievable within the remit of current budgets. The Plan has been drafted for a broad audience interested in the development of the park namely:

- Users of the park and borough residents;
- The Parks and Open Spaces Service;
- Garrick’s Temple to Shakespeare Trust;
- Other services and departments within the London Borough of Richmond;
- Elected members, ward councilors and portfolio holders;
- National agencies;
- Local businesses;
- Partners and contractors

1.2 The Plan will run from January 2022 to December 2023. An interim progress update will be undertaken in January 2023.

2 National Context

2.1 Parks are managed areas of the green environment which provide opportunities for a range of formal and informal leisure, passive and active sports, recreation and play.

2.2 The significance of parks, open space and countryside provision is clear:

- There are an estimated 27,000 public parks in Britain, visited an estimated 2.6bn times each year (Common Select Committee, 2016).
- There is an estimated 85,847 hectares of Publicly accessible green space in Great Britain, 73,400 in England. (*Natural capital accounts containing information about green spaces in urban areas*, Office for National Statistics, August 2019)
- 17.99% of Greater London is designated Public Open Space; with 3.5% Local Parks and Open Spaces & 5.2% Metropolitan Parks (GiGL, 2019).

2.3 It is widely recognised that the provision of high quality ‘public realm’ facilities such as parks can assist in making an area as an attractive place to live and work, and can result in a number of benefits in terms of economic development and

regeneration. A local park can also play a part in promoting healthy living as a place for people to exercise.

2.4 The benefits of safe and accessible parks and open spaces:

Social

- providing safe outdoor areas that are available to all members of the local population;
- providing opportunities for community events, voluntary activities and charitable fund raising;
- providing easily accessible recreation as an alternative to other more chargeable leisure pursuits;
- providing opportunities to improve health and take part in a range of outdoor sports and activities; and
- providing an educational resource or outdoor classroom.

Economic

- adding value to surrounding property, both commercial and residential, thus increasing local tax revenues for public services;
- contributing to attracting visitors, including using parks as venues for events;
- encouraging tourism into the area;
- helping to create an attractive local image; and
- helping to reduce social exclusion and its associated costs to society.

Environmental

- providing habitats for wildlife as an aid to local biodiversity;
- helping to stabilise urban temperatures and humidity;
- absorbing pollutants in the air and ground water;
- providing opportunities for the recycling of organic materials; and
- providing opportunities to reduce transport use through the provision of local facilities, and by providing walking and cycling routes through urban areas.

3 Relationship to Council Aims and Objectives

The Council recognises that its parks and open spaces contribute to the:

- overall vision and priorities of the Council;
- quality of life of local people;
- physical, social and economic regeneration of the borough; and
- greening, attractiveness and biodiversity of the area.

Accordingly this Management Plan and the Parks and Open Spaces Service are guided by and are in agreement with the aims, objectives and principles of the following plans and strategies. These can be found at www.richmond.gov.uk.

3.1 Richmond's Community Plan 2016-2020

The Community Plan describes the Council's vision for the borough and outlines the steps that will be taken, through partnership working, to achieve this vision. The vision is for a borough where:

- local people are engaged and involved in their communities.
- a vibrant and sustainable community and voluntary sector helps residents play a full role in community life.
- the local character of the environment is protected and development is high quality and compatible with local character.
- our towns and local centres are attractive, viable for businesses and contribute positively to the quality of life of residents and visitors.
- people can live as independently as possible in the local community with good health and wellbeing.

For further details of the Community Plan please visit: www.richmond.gov.uk

3.2 Parks and Open Spaces Strategy 2011

Richmond borough has the largest area of public open space per head of population of any London borough. We have a local and national reputation for quality and leadership in the delivery of excellent parks. To ensure the quality of our parks and open spaces remains at a high level, following public consultation, we developed a series of strategic principles by which parks will be managed:

The strategic principles are as follows:

1. Parks and open spaces will be a sustainable legacy for future generations.
2. Parks and open spaces will continue to define our borough.

3. Parks and opens spaces will enrich the life, health and wellbeing of residents and visitors.
4. The Council will lead in the delivery of excellent Parks and open spaces services.
5. Parks and open spaces will offer positive experiences to all visitors.
6. Through innovation, the future development of Parks and open spaces services will be ensured.
7. Increased community participation in Parks and open spaces will be encouraged and supported.
8. Parks and open spaces will be celebrated as centres of excellence.

3.3 Local Biodiversity Action Plan for Richmond

The main aims of the plan are:

- To conserve and where possible enhance Richmond’s variety of habitats and species, in particular those which are of international or national importance, are in decline locally, are characteristic to Richmond or have particular public appeal, which can raise the profile of biodiversity
- To ensure that Richmond residents become aware of, and are given the opportunity to become involved in conserving and enhancing the biodiversity around them
- To raise awareness and increase stakeholder involvement in maintaining and where possible, enhancing species and habitats of importance

The Local Biodiversity Action Plan can be found online here: https://habitatsandheritage.org.uk/wp-content/uploads/2020/10/Biodiversity-Action-Plan-Richmond_compressed.pdf

3.4 Parks Improvement Programme 2012 – 2018

The Council have a commitment to continued improvement in our Parks and Open Spaces by improving existing infrastructure and developing and installing new facilities. The Council continues to have a cyclical investment programme to ensure that parks and playgrounds are up to standards, this includes £300k a year for park improvements and £150k for play. One aim of the management plan is to maintain the gains that we have achieved in previous years.

The Council list all major improvement projects on our webpage, which can be found here:

https://www.richmond.gov.uk/services/parks_and_open_spaces/parks_improvements_and_conservation/latest_parks_updates

4 Site Description

4.1 Outline History of Garrick’s Temple Lawn

Garrick's Lawn is the name of the pleasure garden on the Thames that surrounds Garrick's Temple to Shakespeare, part of the grounds of Garrick's Villa. The Villa, a Grade I listed building, was built possibly as early as the Middle Ages and was purchased in 1754 by the actor David Garrick. The temple is listed as grade I on the National Heritage List for England (list entry number 1065456) and the historic gardens are included at grade II (List entry number 1000805).

Although there is no official record, it is widely believed that Lancelot Capability Brown advised David Garrick on how best to lay out the grounds of Garrick's Villa. The gardens undoubtedly emulate the style for which Capability Brown became famous, and the Garrick's certainly had the means and cultural understanding to adopt the newly fashionable landscape style as the main design option for their beautifully positioned gardens. The octagonal temple was built in 1756 to celebrate the genius of William Shakespeare.

The park passed to the Council in the early 20th century. The temple was restored in 1998-1999 by the Garrick's Temple Partnership Project, funded in part by a Heritage Lottery Fund grant and donations from a range of other organisations and individuals.

4.2 General Information

4.2.1 Land Tenure

Garrick's Temple Lawn is owned by the London Borough of Richmond upon Thames and managed jointly with the Garrick's Temple to Shakespeare's Trust. The lease gives the Trust responsibility for maintaining the interior of the temple – along with advice, of course, from bodies such as English Heritage and the Council's Conservation Planning Team – and the exterior is maintained by the Council through its Property and Construction Projects team.

4.2.2 Location

Garrick's Temple Lawn is situated on the riverside at Hampton in the London Borough of Richmond upon Thames.

4.2.3 Access

As a free and open facility, Garrick's Temple Lawn provides access to local residents and visitors to the area. Visitors can currently access the site which is open between dawn and dusk. Due to the nature of its location, on the slope down to the river, accessing the site is via ramp and is difficult for people with restricted mobility and parents or carers with prams, buggies or wheelchairs.

4.2.4 Local Transport

Train: The site is approximately 15 minutes' walk from Hampton station and approximately 20 mins walk from Hampton Court station.

Bus: The site is well served by buses, including:

- R68: Richmond – Hampton Court, every 15 mins;

- 111: Kingston – Heathrow, every 12 mins;
- 216: Kingston – Staines, every 20 mins.

Car: There is limited roadside parking on Church Street (A311).

Cycle: Cycles can be fastened to the street railings above the site.

4.2.5 Landscape & Topography

The Garrick’s Temple Lawn is roughly an elongated rectangle. The ground slopes gently south down to the river. There are fences and hedges along the eastern and western boundaries and the road support wall to the north. Mature trees are found at the eastern end of the park and younger trees at the western end.

In geological terms, most of the west of the borough lies on River Terrace Gravels, laid down in the Quaternary period during change of course and water levels of the Thames. Two terraces are represented, with the majority of the area being First Terrace and the eastern edge of the area being Third Terrace. Sunnyside and Stain Hill Reservoirs plus the filter beds fall under the First Terrace, whilst Garrick’s Temple Gardens fall under the Third Terrace.

At some locations the gravels are overlain by clay deposits and infiltration is thought to be correspondingly low. However, at most of the gravel sites infiltration is rapid because the gravels have high permeability and thus support dry, acidic soils and corresponding natural plant communities.

4.2.6 Listed Historic Buildings

Garrick’s Temple is a Grade I listed building which was designated in 1952.

4.2.7 Ecology

Garrick’s Temple Lawn is a compact space open space, with much area given over to short turf. However, the trees provide an important habitat for bats, birds and invertebrates alongside the River Thames.

The old boathouse provides a wetland area in which wetland plants flourish; it is regularly inundated with river water but does also collect river debris.

The Thames is a Metropolitan Site for Nature Conservation Importance.

4.2.8 Facilities

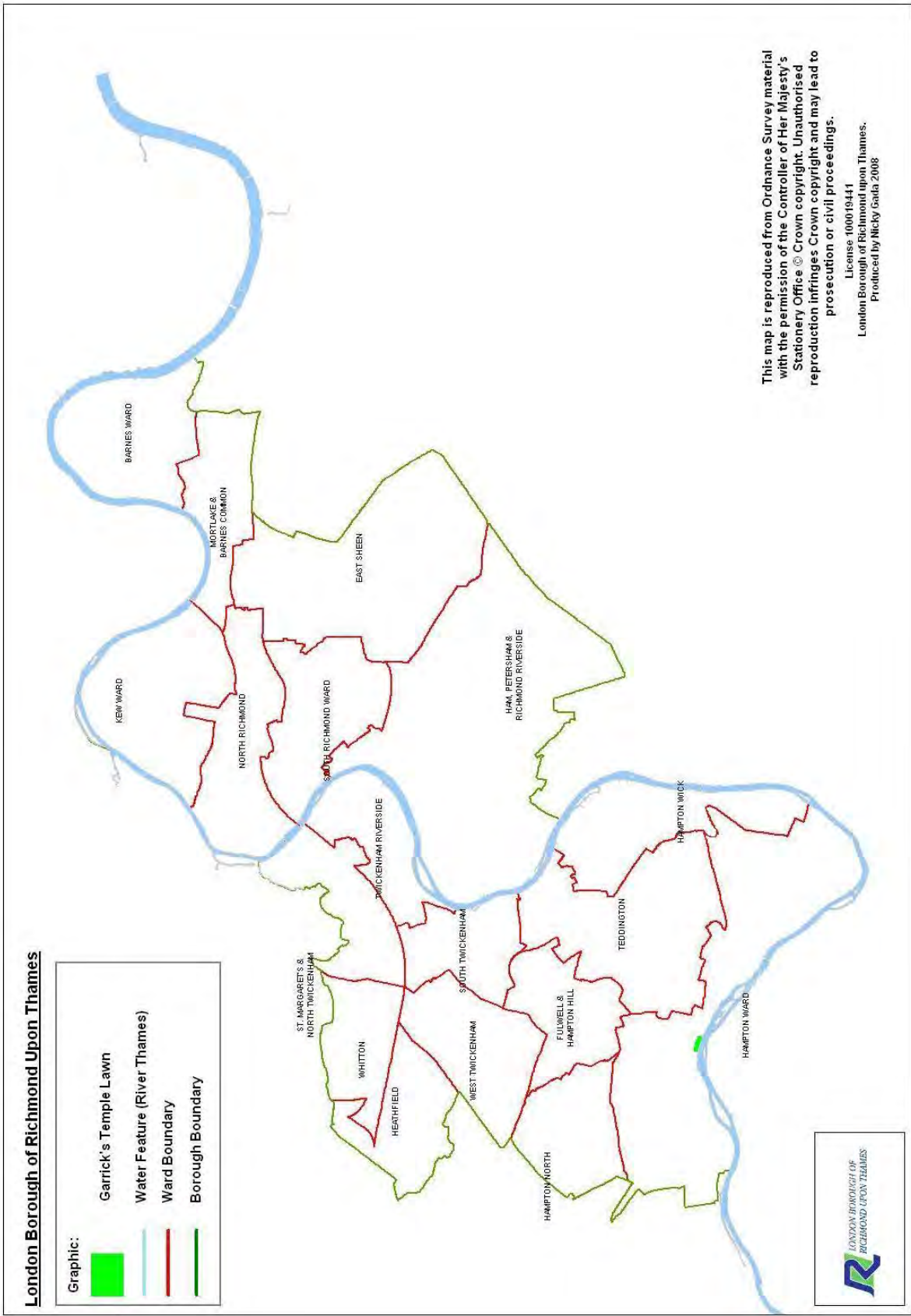
The following facilities are available in Garrick’s Temple Lawn:

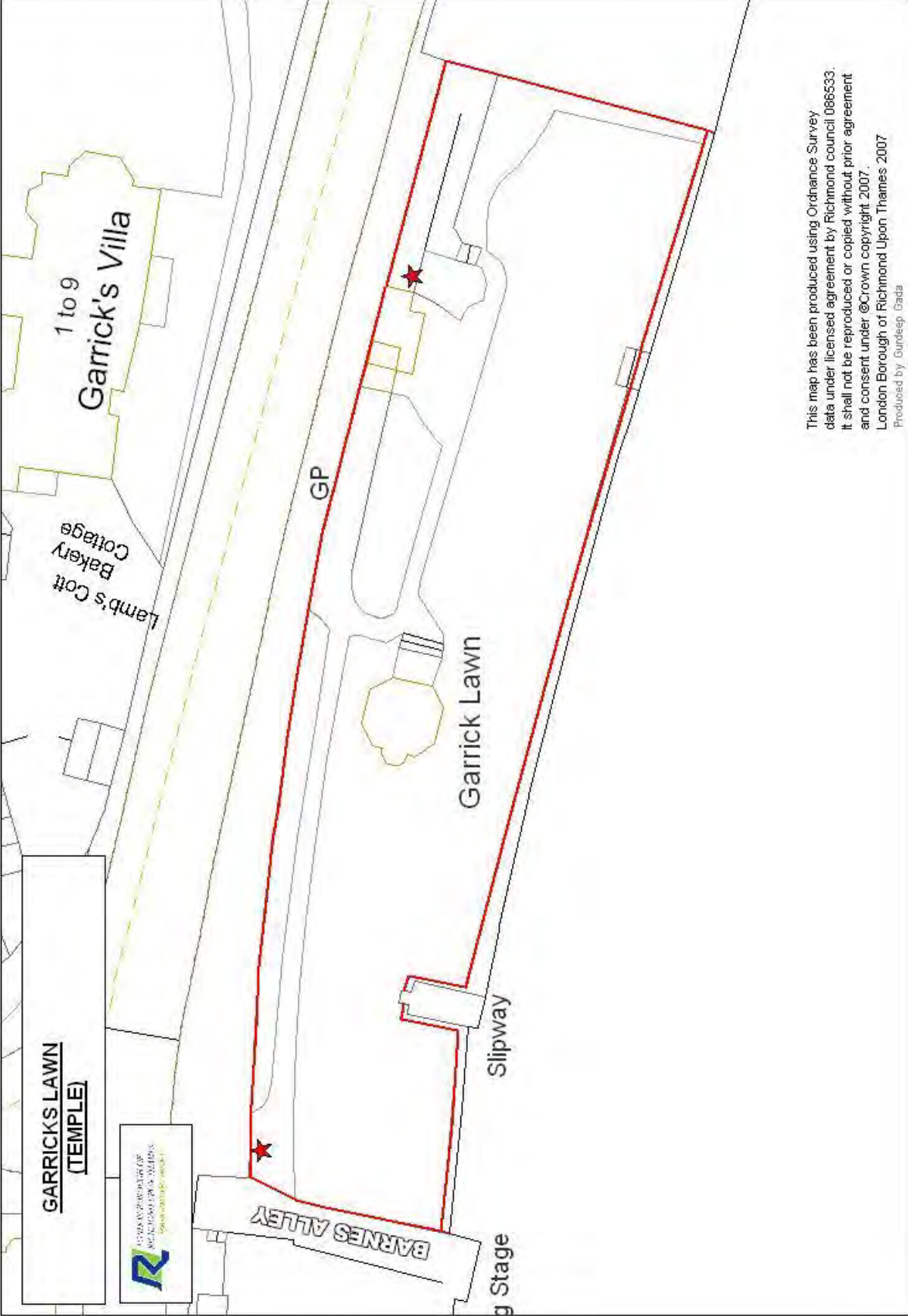
- Riverside seating;
- Litter bins; and
- Education/exhibition area (available for local schools).

4.2.9 Maps and Plans

On the following pages, please find:

- Location map of Garrick's Temple Lawn within the borough;
- Plan map of Garrick's Temple Lawn; and
- Aerial photo of Garrick's Temple Lawn.





This map has been produced using Ordnance Survey data under licensed agreement by Richmond Council 086533. It shall not be reproduced or copied without prior agreement and consent under ©Crown copyright 2007. London Borough of Richmond upon Thames 2007. Produced by Gurdeep Gada



5 Audit of Facilities

5.1 The main reasons for undertaking a local assessment are:

- to plan positively, creatively and effectively in identifying priority areas for improvement and to ensure, as much as possible, that there are appropriate types of parks and open spaces provided;
- to work towards ensuring an adequate provision of high quality, accessible green space to meet the needs of the community and to recognise a duty to equality and diversity to provide equally for diverse groups of users;
- to identify the gap between current and desired levels of need and demand, quality and quantity of provision; and
- to assist in achieving standards such as the Green Flag Award and London in Bloom

5.2 Desirable Outcomes of the Local Assessment

A local assessment of green space will enable planning to be effective and achieve key outcomes required by the National Planning Policy Framework.

These are:

- provision of accessible, high quality park space for sport and recreation that meet the identified needs of residents and visitors;
- provision of a park that is ‘fit for purpose’ – the right type in the right place;
- to provide an appropriate balance between new provision and enhancement of existing provision; and
- setting locally derived provision standards.

5.2.1 It is intended that this management plan helps to achieve these outcomes in terms of providing an analysis of existing provision and a plan to effectively maintain and, where appropriate, develop the facilities and infrastructure of the park.

5.2.2 In addition, it produces a series of actions which will help to achieve the standards laid down for Green Flag Award parks:

- A welcoming place;
- Healthy, safe and secure;
- Clean and well-maintained;
- Sustainability;
- Conservation and heritage;
- Community involvement;

- Marketing; and
- Management.

5.3 Methodology

The methodology used is prescribed in the Government’s Planning Policy Guideline note 17 (PPG17) for the provision of public open space. This consisted of a review of the following key areas of provision:

- Main entrance;
- Boundaries;
- Roads, paths, cycleways and access;
- Parking;
- Information available;
- Planted areas;
- Grass areas;
- Cleanliness;
- Provision of litter bins/recycling;
- Seating;
- Children’s play space;
- Buildings including toilets;
- Health and safety;
- Nature conservation value; and
- Access for people with disabilities

5.3.1 Main Entrance

There are two main entrances into Garrick’s Temple Lawn. These are situated at either end of the site: in the west, a ramp leads down from Thames Street to the river and a gate leads into the site, and in the east a slope leads down from Hampton Court Road.

5.3.2 Boundaries

The northern boundary, below the road, is formed by a concrete wall that supports the highway, with railings at the top. The River Thames forms the southern boundary to the entire site, with revetment and planted reed in sections along its length. In the

west a holly hedge lines the access ramp and in the east a mixed fence and hedge runs from the slope down to the river.

5.3.3 Roads, Paths, Cycleways and Access

There is one surfaced footpath linking the two entrances.

5.3.4 Parking

Garrick’s Temple Lawn does not have a public car park; however, Bell Hill quay, another Council open space just 150m west, does have room for 20 vehicles.

5.3.5 Gate Locking

The park is locked during the hours of darkness and details are displayed on site via posters. There is further information on our [website](#).

5.3.6 Information

Information relating to Garrick’s Temple Lawn is available on the LBRuT website under Parks and Open Spaces www.richmond.gov.uk. The parks signage is attractive and durable giving appropriate contact details. It uses easily understandable symbols to deter users from inappropriate and anti-social behaviour.

5.3.7 Cleanliness

Part of the parks contractor’s duties is to pick up litter and to ensure that the site is kept clean. Graffiti is reported to another team if it cannot be cleaned easily.

5.3.8 Planted Areas

There is a deep shrub bed along the northern boundary and smaller beds for shrubs and bedding along the path outside the Education Centre. These are planted as far as possible with plants from Garrick’s era in the 18th century. The beds are designed in cooperation between the Council and the Trust and maintained by the contractor.

5.3.9 Scenic Quality

The park is an attractive open space offering a fine view along the Thames. Paintings of the gardens from the 18th century provide some guidance on maintaining the landscape.

5.3.10 Grass Areas

The grass is in good condition generally, although has a high plantain density. Work is on-going to reduce this through hand removal. Sections of the lawn have been re-turfed, due to a problem with an influx of weeds.

5.3.11 Provision of Litter Bins

There is adequate litter bin provision for the number of visitors.

5.3.12 Seating

There are three benches, one in the west, one near the Temple and one by the river at the eastern end. Since the last management plan was produced, an additional bench has been added to the park.

5.3.13 Children’s Play Space

There is a no play space in this park, and it is considered inappropriate to the historical setting.

5.3.13 Buildings, including toilets

There are two buildings in the park:

Garrick’s Temple, in the centre of the space, was built in 1756 by actor David Garrick to celebrate the genius of William Shakespeare. The temple is an octagonal domed building with a nod to the Pantheon, Rome, constructed in undecorated brick with a single east-facing entrance. It was built in the Classical style popularised by the Italian architect Palladio with an ionic portico, four columns wide by three deep, flanking the entrance. Several steps lead up to the portico. Inside, glazed arched windows reaching to the ground face the river. A deep curved recess in the west wall provides room for a statue. Outside, a lawn and garden provide views over the Thames to the south.

The sculptor Roubiliac was commissioned to produce a life-size statue for the temple. The original Roubiliac statue of Shakespeare, although bequeathed to the British museum by Garrick, is now in the British Library, along with an exhibition of Garrick’s acting career and his private life in Hampton. A replica statue is now present–The Temple is open to the public on Sunday afternoons (2pm to 5pm) from the first Sunday in April to the last Sunday in October.

The Loggia has a small education and exhibition area with kitchen and undercover area, adjoined to the northern wall near the Temple. Here there are displays of school work and historic photographs. This area is not open to the public except when manned.

5.3.14 Health and Safety

The Council has a generic risk assessment for open spaces which is reviewed each year.

5.3.15 Nature Conservation Value

The River is an important value as a corridor for wildlife. The site’s hedges, shrub beds and the mature trees provide food and shelter for insects, birds and mammals. The riverside planting project and the wetland area in the old boathouse provides a refuge for river life. There are possibilities for enhancement at an appropriate scale.

5.3.16 Access for people with disabilities

This factor has been included to ensure maximum accessibility for those in wheelchairs and for the elderly and the less able-bodied, but also to ensure compliance with the Disability Discrimination Act.

Access to the site is difficult because of its location below the road on the riverbank; the ramp at the western end is unavoidably steep and the slope at the eastern end have a handrail. Once on site, the path is suitable for wheelchairs and there is a ramp into the Temple.

6 Vision and Objectives for Garrick’s Temple Lawn

6.1 The overall vision for Garrick’s Temple Lawn is to:

“To maintain and improve the park so as to continue to provide opportunities for outdoor contemplation, recreation and education in keeping with its location. To retain the 18th century characteristics of the original garden whilst making the riverside park relevant, useful and valuable for 21st century.”

There has been good communication with the Trust throughout 2015 and both sides wish to maintain this.

6.2 The key objectives for Garrick’s Temple Lawn are to:

- continue to work closely with Garrick’s Temple to Shakespeare Trust and users of the facilities so as to adequately maintain and improve the facilities;
- Ensure that Garrick’s Temple Lawn is a place that is secure, safe to use and is clean and well maintained;
- ensure that the management of the landscape maintains the character of the park;
- ensure that the park is promoted and managed in order to provide a high-quality service for the people using it;
- continue to encourage and promote community involvement in the management of the park;
- ensure that the management of the park protects and enhances the biodiversity of the site;
- ensure that the park is managed sustainably; and
- maintain partnership approach to management of the site with the Garrick’s Temple to Shakespeare Trust.

7 Management of Garrick’s Temple Lawn

7.1 Introduction

This section sets out guidelines and general principles to be followed in delivering the vision and objectives outlined above.

7.1.1 Parks Service

The Parks Service is overseen by the Head of Culture, assisted by the Parks Service Manager. It is made up of three teams:

- The Operations team is responsible for liaising with contractors and monitoring the parks. The team includes a parks operations manager, a parks officer, an ecology officer and a support officer.
- The Development team which is responsible for consultation and the planning and initiation of projects. The team consists of a group of local expert consultants coordinated by the Service Manager and assisted by the parks officer.
- The Arboricultural team is responsible for all street trees and arboricultural work in council-managed parks and open spaces, as well as assisting with planning issues. The team consists of a manager, four tree officers and a support officer.

We value diversity and are committed to delivering a service that puts equality of opportunity as a priority.

Management of the park needs to deliver high standards of maintenance of all aspects of the soft and hard landscaping of Garrick’s Temple Lawn within existing revenue budgets. Developments have been funded by major borough-wide capital investment Parks Improvement Programmes between 2005 and 2010 and 2012 and 2017.

7.1.2 Delivery partners

The Council works with Garrick’s Temple to Shakespeare Trust and this is a priority in relation to the continued management of the park. Volunteers from the Trust open the buildings to the public on Sunday afternoons (2pm to 5pm) from the first Sunday in April to the last Sunday in October. There are regular volunteer tasks directed at garden projects, organised by Karelle Bird, the Trust’s Gardens Co-ordinator.

Any new improvements to the site, or maintenance requirements over and above the contract standard, is carried out by the Trust’s volunteers in agreement with the Parks Team member of staff appropriate, such as the Ecologist (conservation matters), Development Officer (seating, signs or structures) or the Parks Operations Team Leader (lawn, planting and paths).

For parks maintenance, a new approach was introduced from April 2013, with services split into eleven separate lots and being delivered through a framework contract. In broad terms maintenance will be carried out by the contractors’ operatives who have the necessary skills to achieve high and consistent standards. As a framework, the contracts will also be available for other authorities and organisations in London and the south-east of England.

Parks Framework contract: February 2018 – February 2021 (renewed March 2021 – 2025)

Following an open and thorough procurement process that began in spring 2017, contractors were appointed to seven service areas to start 36 month contracts in February 2018 (now renewed to 2025). Evaluation was on an 80% cost and 20% quality basis.

1 Amenity Landscape Management	5 Parks Patrol
2 Arboriculture Management	6 Events Management
3 Oak Processionary Moth management	7 External Planting

4 Play Inspection & Maintenance

Procurement was written in an output style with built-in quality measures and performance indicators and asking qualifying contractors to design excellent services using their knowledge and experience.

Relevance to Garrick’s Temple Lawn

Continental Landscapes are the main grounds contractor, undertaking amenity management (grass cutting, shrubs, hedges, sports bookings and pitch maintenance), small works (hard landscaping, infrastructure and furniture installation, etc.) gate locking operations, plus undertaking play inspection and maintenance. They also undertake parks cleansing alongside existing street cleansing and graffiti removal to create a joined-up operation.

KPS are the arboricultural contractor, working closely with the Council’s tree team who undertake inspections and specify works, with Bartlett Tree Experts undertaking Oak Processionary Moth management.

Events in parks are managed by The Event Umbrella, a company who specialise in managing outdoor events in the public sector.

Park patrols are undertaken by Parkguard, a company specialising in education, support services and enforcement in parks and open spaces.

7.2 **A Welcoming Place**

The following management regimes all play a part in ensuring that Garrick’s Temple Lawn continues to be a welcoming area.

7.2.1 **Graffiti removal**

As a part of our aim to make the Borough safe, green and clean we are committed to reducing and removing graffiti. The park will be inspected daily for graffiti. The full details of the borough’s commitment to the prompt removal of graffiti can be viewed at: www.richmond.gov.uk

There is an agreement with the Council’s street cleansing contractor, Continental Landscapes Ltd, to manage the removal of all graffiti within five working days. Where the graffiti is offensive it will be removed within one working day of notification.

7.2.2 **Signage**

Park signage will be kept clean and will be regularly inspected. Any repairs will be carried out promptly.

7.2.3 **Pathways**

All paths and hard surfaces will be inspected annually. Any necessary repairs will be carried out as promptly as possible. ‘Desire lines’ will be assessed for permanent construction.

7.3 **Healthy, Safe and Secure**

The following management regimes all play a part in ensuring that Garrick's Temple Lawn continues to be a healthy, safe and secure place.

7.3.1 **Community Safety**

All contractors working on the park undertake an important role in terms of a visible staff presence on the park and structure their maintenance work accordingly. All contractors are uniformed and wear highly visible clothing.

7.3.2 **Dog fouling**

The Mobile Litter gang, Parkguard and the Parks Service make efforts to educate dog owners to be responsible for their dog's waste as the dangers of humans coming into contact with dog faeces are well known.

Signage clearly indicates that dog mess should be picked up and disposed of by those walking their pets.

Dog waste can now be disposed of in normal litter bins and these bins are emptied daily by the Council's grounds maintenance contractor.

The Council has adopted the following dog control orders: www.richmond.gov.uk

7.4 **Clean and Well Maintained**

The following regimes are designed to ensure that Garrick's Temple Lawn is clean and well maintained.

7.4.1 **Grass Maintenance**

Grass surfaces within the park are mainly classed as amenity grass. Amenity turf is used for general recreation and formal and informal sports and can include wide-open spaces or those areas planted with trees and shrubs. The height of this grass is kept between 20 and 50mm throughout the year.

The level of maintenance will depend on the level of use, with increased repairs, fertilising, and scarifying of those areas subject to heavy wear. Most repair works to turf will be carried out in the autumn or spring, with areas either re-turfed or seeded as appropriate.

Grass edges, whether they are against paths, fences or walls will be cut at the same time as the rest of the grass using strimmers in most areas.

7.4.2 **Trees**

Trees within parks are subject to inspection by suitably qualified and experienced Arboriculturalists, this is in order to identify and remedy any unacceptable risks to people using the sites, an example of this is the prophylactic treatment of oak processionary moth or the removal of trees that are extensively decayed compromising their structural integrity.

Tree pruning is only carried out where necessary for risk management purposes or where formative pruning is necessary; this approach allows Richmond's parks to retain a natural landscape with well-formed specimens. Where there is a particular characteristic by way of species composition, size or natural distribution the Council

seeks to maintain this through selecting appropriate replacement and new trees. All tree works are in accordance with our Tree Management Policy.

Richmond Council encourages the volunteers of Garrick Lawn to consider the tree population within parks and to communicate with the parks and open spaces team in order to make improvements and ensure that there is continuity in the way that the trees are managed.

The trees within Garricks Temple Lawn are in keeping with 18th Century Garden design; columnar lombardy poplar and Mediterranean cypress contribute towards the character of the setting of the site. The sites trees are of varying size and age and are a native and non-native mix.

7.4.3 Cleansing

The collection of litter is extremely important in maintaining the cared for appearance of the Gardens and has a direct effect upon how people treat and respect the site. Litter is collected on a daily basis before 10.30am each day by the park cleansing contractors.

The park cleansing contractors carry out litter picking, emptying of litter bins and the sweeping/blowing of paths. This applies to all surfaces, paths, lawns and beds.

When the park has high numbers of visitors and large amounts of litter is expected the parks cleansing contractors will carry out additional visits to empty the bins. The full litter bags will be collected and removed from the site on the same day. In addition, the bins are cleaned and disinfected quarterly to avoid an unsightly accumulation of dirt.

7.4.4 Park Furniture and Fittings

The contractor operative ensures that all park furniture is clean, and will check benches, notice boards and bins on a regular basis. Items will be cleaned on a monthly basis or more frequently when heavily used. Repairs will be requested by the operative on a Defect Report and repairs will be carried out promptly. Any single replacement or repair will match the existing furniture so that the style of the seat remains consistent.

Playgrounds are inspected twice a week by the grounds maintenance contractor and any hazards identified are dealt with accordingly. In addition, there is an annual inspection to ensure that the playground meets ROSPA standards.

7.4.5 Hard Surfaces

Hard surfaces will be kept clean with litter swept from surfaces regularly by the grounds' maintenance contractor.

Hard surfaces will be maintained in a weed free state with spot treatment weed spraying between March and November. Paths will be kept in a good state of repair and all paths being inspected annually and any repairs ordered to be carried out between March and November.

Drains and gulleys are inspected regularly.

7.4.6 Sports Facility Maintenance

There are no sports facilities in Garrick's Temple Lawn.

7.5 Environmental Sustainability

The following regimes are designed to ensure that Garrick's Temple Lawn is managed in a sustainable way.

7.5.1 Recycling

At present we do not have recycling facilities available in this park. However, residents can recycle at some of our other parks and open spaces as well as the cafes situated within them.

7.5.2 Recycling green waste

The Council's ground maintenance contractor takes all green waste to Townsmead recycling centre.

7.5.3 Pesticides

The use of pesticides at Garrick's Temple Lawn is currently zero and any necessary use will always be minimised. An Integrated Weed Management policy has been developed to assist decision-making.

7.6 Community Involvement

This is crucial to the management of Garrick's Temple Lawn. The Council works closely with the Garrick's Temple to Shakespeare Trust. This will continue to be of the utmost importance.

7.6.1 Parks Events

The Council encourages the hire of parts of the area to appropriate organisations. In reality this is likely to centre around the Temple, which is leased by the Trust with maintenance support from the Council. Local Ward Councilors are consulted before permission is granted for any new major event. An evaluation process is held after each event.

The Trust organises Shakespeare performances and music and dance within the Temple and the lawn area outside.

7.7 Marketing

Promotion and marketing of the park is carried out by means of a range of measures, including the Council's website, publicity literature and the Park's noticeboard, to ensure that local people and visitors to the borough are aware of the facility.

7.7.1 Entrance Signage

A corporate style of signage for Richmond's parks and open spaces was launched in 2007. Signs are present at the entrances.

7.7.2 Internet

Information about Garrick’s Temple Lawn is on the council’s website and can be accessed from the Parks and Open Spaces link www.richmond.gov.uk

Information on the Temple and Trust can be found at www.garrickstemple.org.uk/index.htm.

7.7.3 General Promotion

In order to create community awareness for all of its facilities, the Parks Service regularly produces articles and press releases about activities and facility development. Posters are put up to advertise consultations or events. The Trust produces an events leaflet advertising their summer activities.

8 Achievements and Action Plan

8.1 Achievements

Changes and improvements made to the Garrick’s Temple Lawn during 2020-21 are listed below:

- Work with the Friends of Garrick’s Temple and Facilities Management on the repairs to the Temple
- Continue to upgrade the seating through the memorial bench programme.
- Carry out repairs to the lawn area by laying new turf.

8.2 Action Plan

The following action plan is divided into three sections:

Item of work and location	Year		Timing	Resources
	2022	2023		
Works approved to re-design and upgrade the loggia area of Garricks Lawn.	Y	Y	Ongoing	Facilities Management & The Trust
Remove self-seeded vegetation along the river bank to improve vistas	Y	Y	Ongoing	Continental Landscapes/LBRuT
Continue to upgrade the seating within the park through our memorial bench programme			Ongoing	Parks Team
Continue to enforce new mooring bye-law along riverbank.			Ongoing	Parks Team & Parkguard Ltd

8.2.1 Development and renewal

The Council is open to the changing needs of the local community with regards to facilities within any of the borough’s parks. It is not envisaged likely there will be any major additions to the parks’ facilities. The major challenge is to maintain high standards of maintenance and to plan for effective repair and renewal of the major elements of the park.

8.2.2 Community Engagement

The parks section intends to continue to work with the Garrick’s Temple to Shakespeare Trust and local residents. We are committed to being receptive to concerns and suggestions voiced individually or through community groups.

8.3 Operational Commitments

This is presented in tabular form and includes the most important elements of the day to day maintenance of a park, grass cutting, trees and shrubs, litter collection and maintenance of parks furniture. Monitoring and inspection duties are included. Biodiversity management and initiatives are also included in this section.

Element	Action	Frequency
Grass Maintenance (1870 sq metres & 117m edging)	Kept to a height of between 20mm & 50mm	Cut approximately every 10 days during the growing season
Tree maintenance	Inspection Replacing and expanding variety and stock	Annual As required
Shrub Maintenance (468 sq metres)	Kept weed free Mulching Pruning	As required Annual As required, dependent on species
Litter collection Recycling	Litter picking Emptying of bins	Daily Daily
Graffiti	Removal of obscene/offensive Removal of other	Within 24 hours Within 5 working days
Parks furniture	Clean and paint Repair/replace	Annual As required
Monitoring of contract	Monitoring	Weekly
Infrastructure inspection	Inspection	Annual
Biodiversity opportunities and actions	Planting hedges Planting fruit trees Creation of dead hedges Installation of bird/bat boxes Relaxing mowing regime	Programme over 5 years We will work to the guidelines as set out in our Nature Conservation Policy Statement.

Tree planting	Identify planting opportunities	Programme over 5 years
---------------	---------------------------------	------------------------

8.4 Conclusion

This Management Plan is not ‘set in stone’. It provides a framework and guidelines that enable the London Borough of Richmond upon Thames to manage the site to a high standard in a sustainable way. The Council is open to the changing needs of local communities and will continue to work closely with partners. The Plan will run from January 2022 to December 2023. An interim progress update will be undertaken in January 2023.