



Welcome

Be Covid-19 Ready – 18 August 2020

Kathryn Williamson, Director, RCVS



Empower

Involve

Enable

Richmond CVS – supporting local groups with:

- Recruiting and managing volunteers
- Resources to help organisations – [Covid-19 resources](#) on website
- Online meetings, networks and training
- Information and support eg on finding funding/future challenges

For more information: www.richmondcvs.org.uk

Email: action@richmondcvs.org.uk



Empower

Involve

Enable

Helping Richmond be COVID-19 Ready

Shannon Katiyo FFPH

Director of Public Health

Directorate of Adult Social Care & Public Health

Dr Pui-Ling Li

Public Health Consultant

Bridget Forya

Interim Health Protection Infection Prevention Control Lead

Graeme Markwell

Senior Public Health Lead

Dr Ruby Uddin

GP Registrar Public Health

- **Acknowledgments to members of Public Health COVID-19 Response Team for contributions**

Helping Richmond be COVID-19 Ready

The presentation will cover:

- **Managing local outbreaks**
- **Providing safe services that limit any potential spread of COVID-19**
- **Raising awareness and understanding of COVID-19 testing and contact tracing among our communities**

Managing Local Outbreaks

Richmond's Local Outbreak Plan is based on the tried and tested practice of preventing and containing outbreaks in individual settings

Plans are centred on 7 themes:

- Healthcare and education settings
- High-risk workplaces, communities and locations
- Local testing
- Contact tracing in complex settings
- Data Integration
- Vulnerable people and diverse communities
- Local boards and communications

Managing Local Outbreaks

To support Voluntary and Community Sector organisations to prevent outbreaks we have developed a set of 'Easy Read Tools':

- **Being 'COVID' Ready: Action Template**
- **Test and Trace a Guide for Local Organisations**
- **Social Media Graphics and Posters**

https://www.richmond.gov.uk/local_outbreak_plan

Providing safe services that limit any potential spread of COVID-19

Staff and volunteers should:

- **Wash hands regularly and wear face covering in enclosed public spaces**
- **Maintain social distancing with non household contact or those not in their support bubble**
- **Avoid public transport if possible opting to walk or cycle**

Providing safe services that limit any potential spread of COVID-19

Volunteers and staff who are clinically vulnerable should:

- Maintain 1-2 metres away from others wherever possible
- Wash their hands carefully and more frequently
- Maintain thorough cleaning of frequently touched areas

Providing safe services that limit any potential spread of COVID-19

Working Safely

- Gatherings of >30 people are not permitted
- Workplaces should meet COVID-19 secure guidance
- Employers should ensure staff and volunteers can work safely

Providing safe services that limit any potential spread of COVID-19

Five steps to working safely:

1. Carry out a COVID-19 risk assessment
2. Develop cleaning, handwashing and hygiene procedures
3. Help people to work from home
4. Maintain 2m social distancing, where possible
5. Where people cannot be 2m apart -manage transmission risk

Providing safe services that limit any potential spread of COVID-19

Links and guidance to working safe:

- [COVID-19 Guidance for Voluntary Community and Social Enterprise organisations](#)
- [Guidance on how volunteering can be done safely](#)
- [Staying alert and safe \(social distancing\)](#)
- [Working safely during coronavirus \(COVID-19 secure guidelines\)](#)
- [Corona virus Safer travel guidance](#)
- [Guidelines for the Clinically vulnerable](#)
- [COVID-19 Visual Guide to PPE](#)
- [Facial Hair and FFP3 respirators](#)
- [Best Practice Handwash](#)
- [How to wash your hands \(video\)](#)
- [Best Practice hand rub](#)
- [Joint BioSecurity Council Workplace Action Cards](#)

Raising Awareness in the Community

What can you do?

- Keep up to date - refer to Government, NHS and Council information websites
- Use the Council toolkit to tailor messages to your clients
- Free online Covid-19 training is available through the World Health Organisation and London High School of Tropical Medicine

Test and Trace: A guide for local organisations

What is Contact Tracing?

- Contact tracing is process to trace close recent contacts of anyone who tests positive for a disease and, if necessary, to notify them that they must self-isolate at home to help stop the spread of the disease.
- **NHS Test and Trace** is the name for the NHS contact tracing service for coronavirus.

What happens?

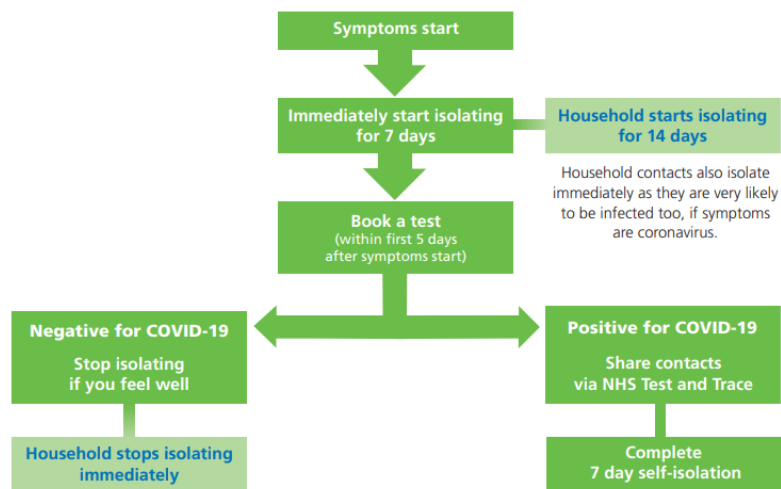
1. **Testing** Anyone who has symptoms of coronavirus should book testing with NHS Test and Trace to see if they have the virus. Apply online on GOV.UK. Or call 119 if you have problems using the internet.
2. **Identify close contacts** NHS Test and Trace contacts all individuals with a positive test result asking them to share information on their close contacts in the 48 hours before symptoms started until 10 days after symptoms started
3. **Alert close contacts** NHS Test and Trace anonymously alerts contacts identified advising them to self-isolate for 14 days to help stop the spread of the virus

What is a close contact?

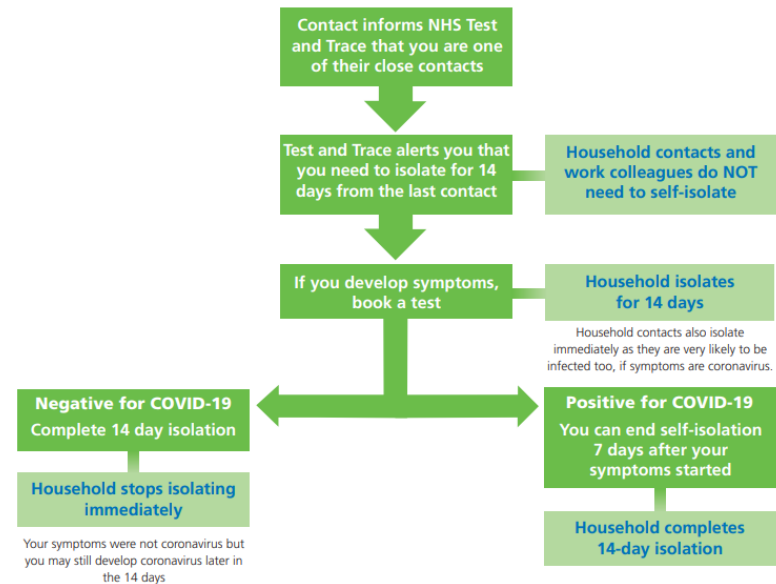
- A 'close contact' is a person who has been close to someone who has tested positive for coronavirus (COVID-19) while they are infectious.

Test and Trace: A guide for local organisations

What to do if you have symptoms

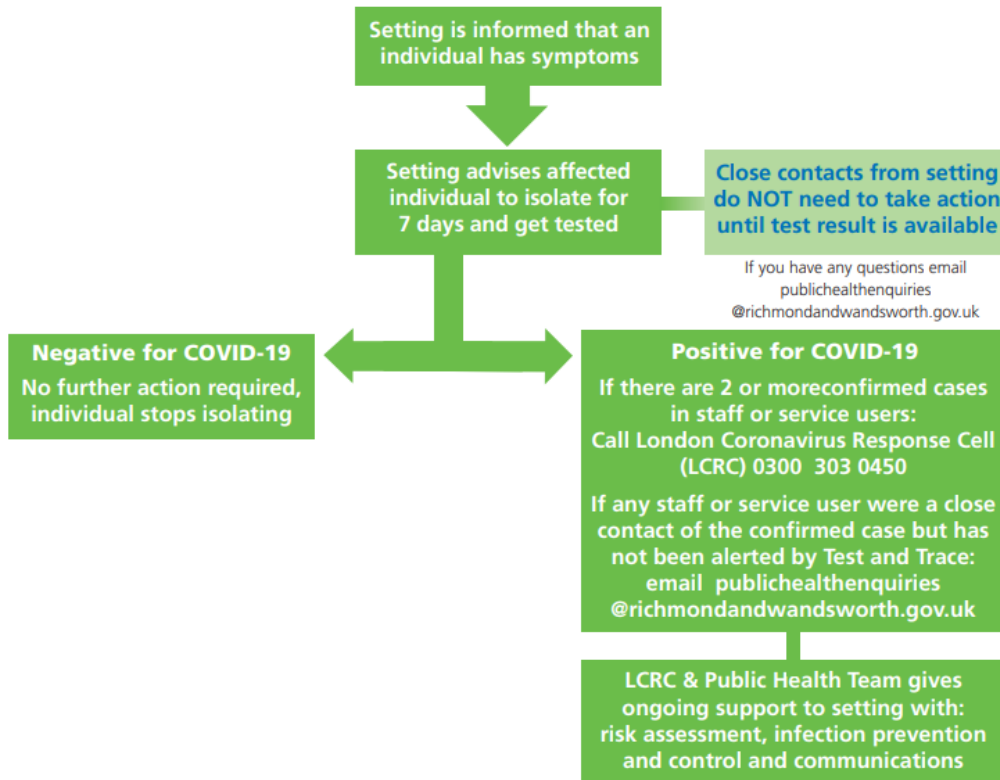


What to do if you are a close contact of a confirmed case



Test and Trace: A guide for local organisations

What if someone in your organisation has symptoms of coronavirus



Test and Trace: A guide for local organisations

Questions

1. **Local Outbreak plan**
2. **Test & Trace**
3. **Facilities and venues**
4. **PPE/Face coverings**
5. **Service delivery e.g. changes to your services or support for your service**

Any further queries please email

Email: publichealthenquiries@richmondandwandsworth.gov.uk