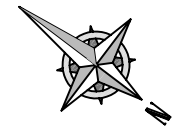
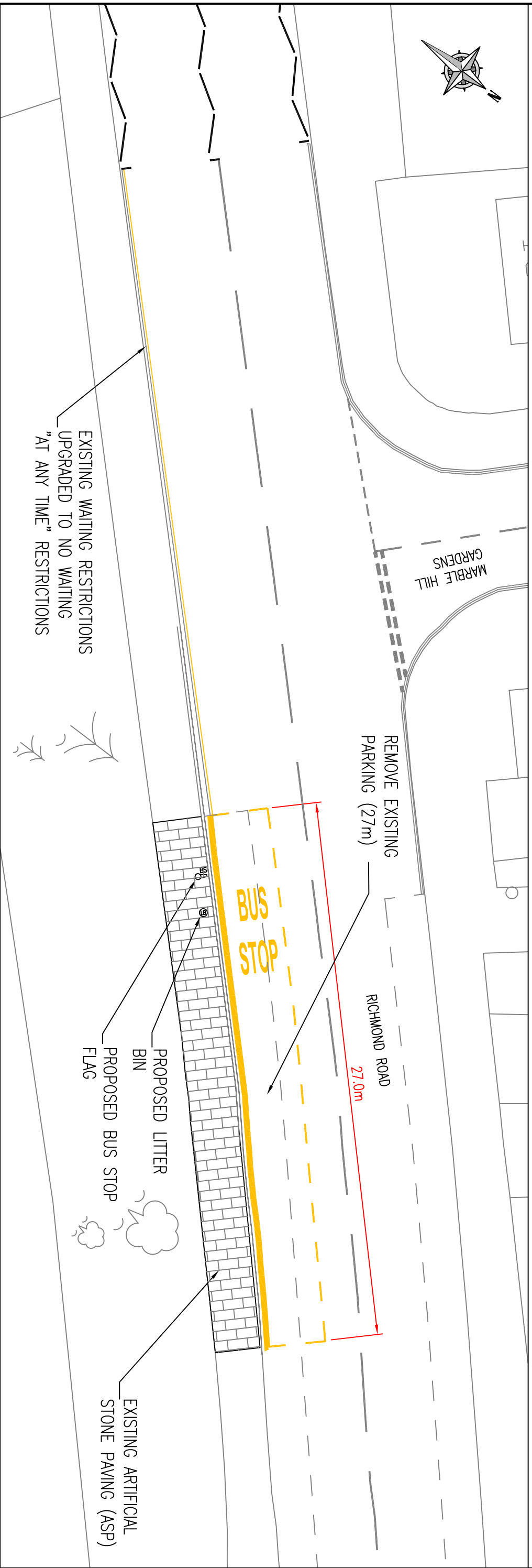
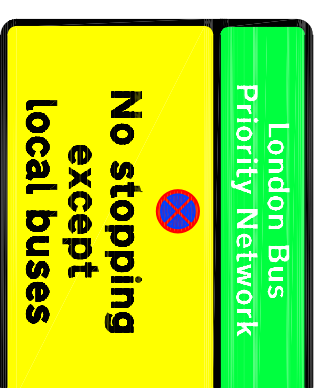


LOCALITY PLAN SCALE 1:2500

Design Statement

A new temporary bus stop flag & litter bin is to be installed as well as a 27m bus stop clearway which will provide a designated stopping area for buses.

DETAIL 'A'



REVISION	24/9/07	RELOCATED STOP DUE TO SAFETY AUDIT	24/9/07	24/9/07	24/9/07	24/9/07
		AMENDMENT				

CLIENT	LONDON BOROUGH OF RICHMOND UPON THAMES	ISSUING OFFICE	TWICKENHAM
PROJECT	RICHMOND ROAD BUS STOPS	TELEPHONE	020 88911411
DRAWING TITLE	RICHMOND ROAD - PROPOSED NEW BUS STOP WESTBOUND AT JCN OF MARBLE HILL GARDENS	DRAWING NUMBER	2125-CS-GL-002
REVISION			C

"This map is reproduced from Ordnance Survey material with the permission of the Controller of Her Majesty's Stationery Office © Crown copyright. Unauthorised reproduction infringes Crown copyright and may lead to prosecution or civil proceedings 100019441 [2005]."