

# Teddington Travel to Work Network

## 2<sup>nd</sup> network forum meeting

19 June 2008

# Teddington Travel to Work Network

## Welcome

Jakub Bojczuk



## Progress to date

- Launched November '07
- Meetings with key organisations to solidify core group
  - Haymarket
  - LGC
  - NPL
  - NWML
  - Richmond & Twickenham Primary Care Trust
  - St Mary's University College
  - Tearfund
- Intention to widen group to more organisations
- TfL 'A New Way to Work' Corporate and Enterprise funding packages
- Business consultation and network strategy
- Continuing commitment from SWELTRAC
- Smarter Travel Richmond



## This morning's agenda

- Vision, role & structure of the network and what members can get out of it
- Travel to workplaces in Teddington
- Discussion – travel problems & network quick wins
- Tearfund – a local travel plan case study
- Go Green Richmond upon Thames
- Ongoing involvement in the network
- Feedback and questions



## Vision, role & structure of the network and benefits for members

Damian Price

### Vision

**To facilitate smarter choices for travel to work in Teddington, including walking, cycling, public transport and car sharing, in order to reduce the negative impacts of single occupancy car travel on congestion, carbon emissions, the environment and health**



## Role of the network

- Locally-relevant practical support and resources for travel planning
- Help members apply for TfL funding
- Trading ideas and experience and, possibly, joint initiatives such as car sharing
- Channel for liaison with local authority & TfL
- Assisting members to meet their own environmental targets (eg. ISO14001)
- CSR benefits

## Structure of network

<b><i>Definition of group:</i></b>	An informal travel plan network of organisations in the Teddington area
<b><i>Group structure:</i></b>	Organisations all equal
<b><i>Relationship of member organisations:</i></b>	Common interest – informal
<b><i>Lead organisation:</i></b>	SWELTRAC (LB Richmond)
<b><i>Funding:</i></b>	TfL funding and SWELTRAC, plus any ad hoc contributions

## Member benefits: Network services

- Information service
  - Arrange quarterly network meetings
  - Email list and information exchange
  - Electronic newsletter
- Direct assistance to members
  - Practical help in developing travel plans
  - SWELTAC support including site visits, surveys, presentations to employees
  - Access to TfL 'A New Way to Work' funding packages
  - Facilitate joint initiatives amongst members eg. wider car sharing
- Organise events to coincide with wider campaigns
  - eg Dr Bike, National Bike Week, Walk to Work Day, In Town Without My Car
- Co-ordinated voice on relevant issues

Doesn't require financial inputs from members to network

## Member benefits: Possible network actions

To be funded by SWELTRAC and LB Richmond

Possibilities include:

- Car share scheme for Teddington Travel to Work Network
- Cycle study
  - Map existing cycle parking and cycle usage
- Additional cycle parking at station and elsewhere
- Network website with login for members, including factsheets
- Your suggestions

# Travel to workplaces in Teddington

Donald Yell

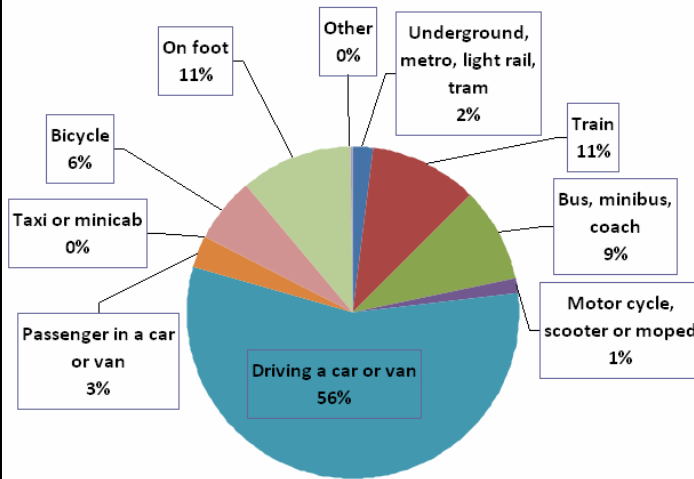
- Patterns of travel
- Provision by mode

Teddington ward

Map of the 2003 CAS ward for Teddington available at:-

<https://www.nomisweb.co.uk/reports/Imp/ward/1308626057/report.aspx?town=teddington>

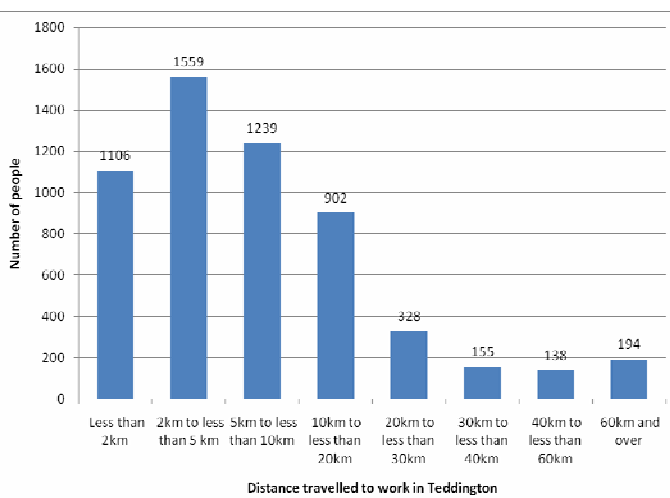
## Modal shares - travel to work in Teddington



- **Majority travel to work by car alone**
- **Significant number – albeit the minority - travel by sustainable modes**
- **Absolute terms:**
  - **3,473 drove**
  - **629 walked**
  - **364 cycled**

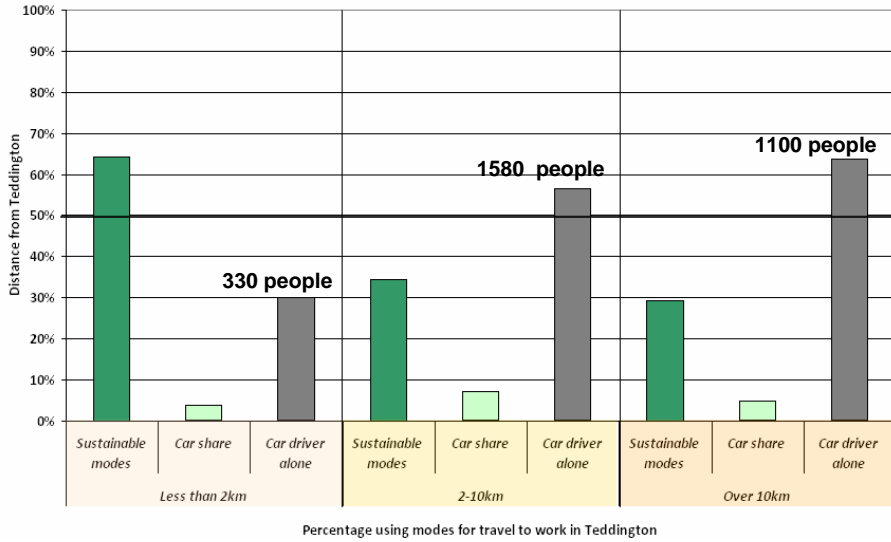
**Teddington ward**  
**Source: 2001 Census**

## Distance travelled - Travel to work in Teddington



- **47% travel less than 5km (about 3 miles)**
- **69% travel less than 10km (about 6 miles)**

## Distance / mode - Travel to work in Teddington



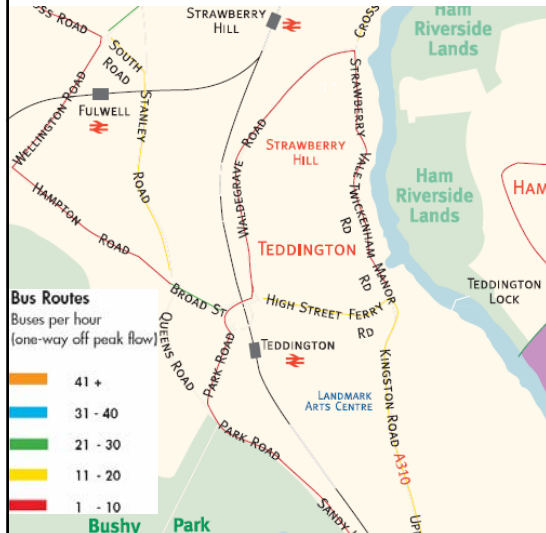
## Provision by mode: Road network



- Well connected by road
- Crossed by 3 major roads
- Significant car parking available
- UDP: traffic congestion
- CPZ
- Car share scheme



## Provision by mode: Public transport



### Strengths

- Good rail connections
- Cycle parking at station
  - Teddington: 47 stands
  - Strawberry Hill: 24 stands
- Strawberry Hill station
- Buses to many destinations

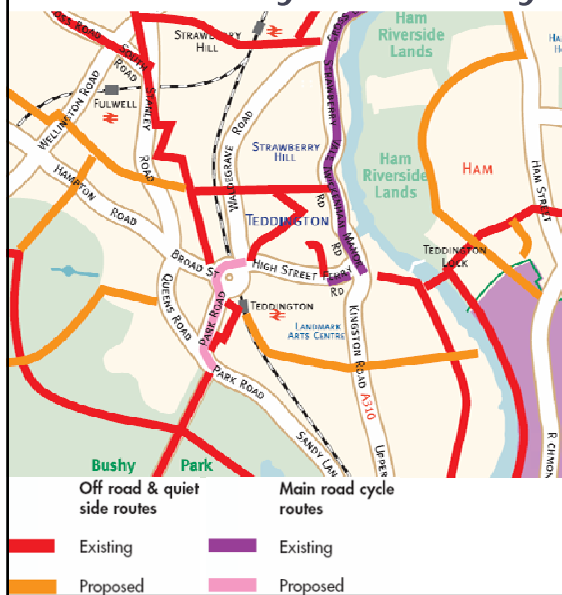
### Weaknesses

- Broom Rd not directly served by bus
- Distance between station & bus stops
- 465 bus no longer running

### Opportunities

- Waymarking

## Provision by mode: Cycling



### Strengths

- Routes through park and towpaths
- Cycle parking at stations

### Weaknesses

- Lack of cycle paths on roads
- Short and narrow cycle lanes
- Security of cycle parking

### Opportunities

- More and better cycle routes, including those in Bushy Park
- More public cycle parking

## Provision by mode: Walking

### Strengths

- Pleasant area

### Weaknesses

- Distance between station and bus stops
- Noise and pollution caused by traffic

### Opportunities

- Perception of distances eg station to Broom Rd
- Waymarking
- Promote health benefits of walking

**“The Council recognises walking as the primary mode of transport and therefore will maintain and improve the environment for all pedestrians”  
(Local Implementation Plan 2007/08 – 2009/10)**



## Discussion - travel problems and quick wins

What are the top 3 travel problems for those wishing to travel to work in Teddington by sustainable modes (walk, cycle, bus, train, car share)?

What are the top 3 quick wins would do most to increase the number of people using sustainable modes to travel to work in Teddington?

## Travel Plan Experience of Tearfund

tearfund

## Introduction to Tearfund

Tearfund is a 350 + person organisation, based on Church Road in central Teddington.

Staff travel from across the Greater London Area and throughout the wider area of the South of England to work at Tearfund.

tearfund

## What does Tearfund do?

Tearfund is an international poverty relief and development non-governmental organisation working with partners in developing countries around the world. Our head offices are based in Teddington, and we have regional offices scattered throughout the UK and Ireland.

The logo for Tearfund, featuring the word "tearfund" in a white, lowercase, sans-serif font on a dark blue rectangular background.

## Tearfund's Vision

We are passionate about the local church bringing justice and transforming lives – overcoming global poverty.

Our ten-year vision is to see 50 million people released from material and spiritual poverty through a worldwide network of 100,000 local churches.

The logo for Tearfund, featuring the word "tearfund" in a white, lowercase, sans-serif font on a dark blue rectangular background.

## Tearfund's Sustainability Policy

The Tearfund Environmental Policy plays an integral part of Tearfund's ethos and values. Tearfund advocate a strong commitment to address environmental issues through sustainable resource management, climate change adaptation, disaster risk reduction and pressure on government policy decisions.

**tearfund**

## Travel Planning Experience

The Tearfund Travel Plan was first implemented in 2001 in line with the refurbishment of the office

Staff Travel Plan surveys have been conducted in 1998, 2004, 2005, 2006 and 2008.

The Travel Plan involves all 350 employees at the head office in Teddington

The Plan has also been actively marketed to visitors

**tearfund**

## Roles and responsibilities

The Facilities Team Administrator is responsible for the administration of the Travel Plan

The Facilities Manager is in charge of the implementation of the Plan

The Environmental Task Force group within Tearfund meet regularly to review environmental policies and suggest new ideas for helping Tearfund continue to develop a 'green' organisation.

The logo for Tearfund, featuring the word "tearfund" in a white, lowercase, sans-serif font on a dark blue rectangular background.

## Objectives of the Tearfund Travel Plan

To reduce Tearfund's reliance on the car transport

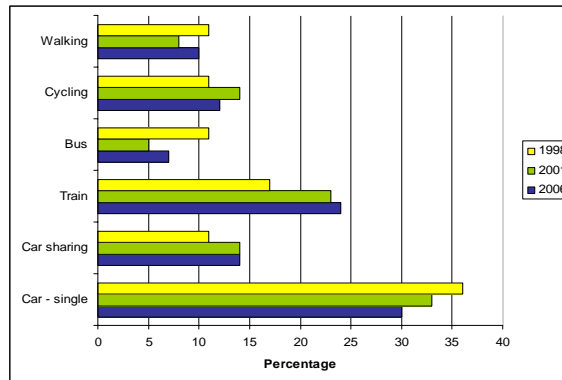
To promote greener, cleaner travel choices including cycling, walking, public transport and car sharing

To reduce unnecessary journeys and support alternative work practices such as home working and flexible working

The logo for Tearfund, featuring the word "tearfund" in a white, lowercase, sans-serif font on a dark blue rectangular background.

# Travel to work

## Modal Split



tearfund

# Where the Travel Plan has been successful?

## Measures implemented

- Cycle racks for 60 bikes in a lockable & covered garage.
- Showers & changing rooms with hair dryer & 30 lockers and a drying room.
- Pool bikes with safety helmets, locks & reflective clothing.
- 4 Pool cars
- 30 Parking spaces with 1 disabled & 3 visitor spaces clearly marked.
- Green Travel notice board with maps for staff to take away of local cycle routes, bus & train timetables.
- Travel pages on Tearfund Intranet for staff reference which is referred to in the staff handbook.
- Car share's advertised on Tearfund Intranet.
- Bike week & car free day promoted.
- Car share day when parking spaces are reserved for car share vehicles only.
- Re surfacing & marking of walk ways around office.
- Pool car & taxi booking forms all ask 'have you considered alternative less pollution methods of transport?' & are required to be signed off by team leaders for authorisation.
- Pedometers given to all staff to encourage walking.

tearfund

# What is next?

Moving Forward

Tearfund has just resurveyed their staff and is looking to improve travel options

Tearfund is considering to join the 'Corporate Scheme' and work with TfL to deliver better Travel Plan

Tearfund would like to create an on-line car share scheme

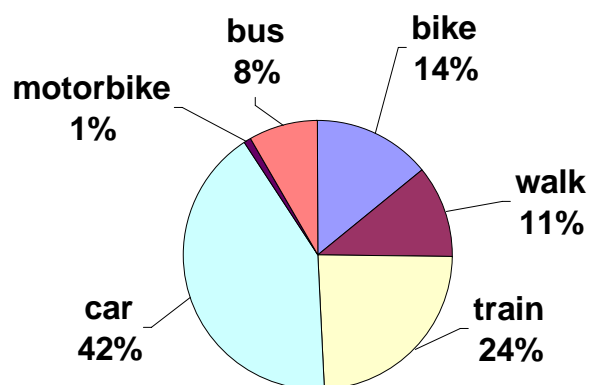
Promotion of home working will be also considered

Introduction of bus and train season ticket loans

On going review and monitoring

**tearfund**

# Recent Survey Results



**tearfund**

## Recent Survey Results

Response rate: 65%

73% of drivers indicated that they were either currently car sharing or willing to car share; many would be interested in a scheme with persons from other organisations in Teddington

57% of staff are currently travelling to work via public transport or green transport

Currently 30% of those travelling to work by car are car sharing

tearfund

## Future Ideas:

We have great facilities at Tearfund for cyclists, we are interested in seeing how it might be possible to encourage more people to cycle to work and help reduce our corporate carbon footprint!



tearfund



Green Transport Info Board  
– very well used!



Shower, changing  
facilities and drying  
room



tearfund

**gogreenrichmond**  
UPON THAMES



Green Business Coordinator  
[sophie.maqsood@richmond.gov.uk](mailto:sophie.maqsood@richmond.gov.uk)



SUSTAINABILITY UNIT

19th June 2008

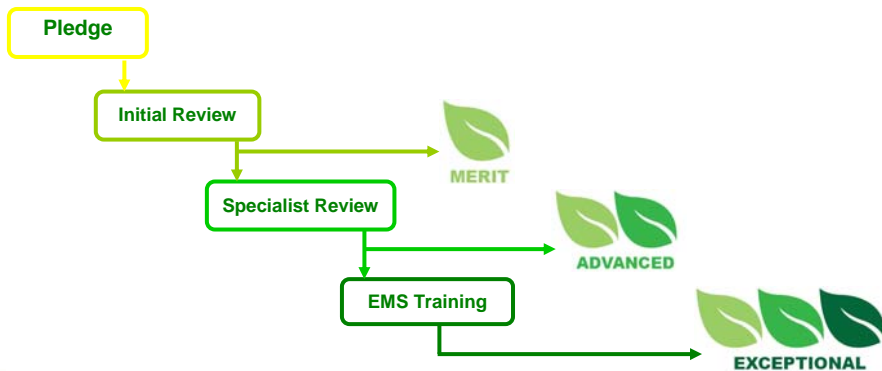


## Business benefits of Going Green

- Cost savings by decreasing waste, water and energy use
- Improving business logistics through increasing internal efficiency
- Comply with legislation and minimise risk
- Gain a competitive advantage by improving company image
- Motivate staff
- Demonstrate commitment to stakeholders by meeting client requirements and be able to prove environmental credentials to customers
- Improve environmental protection



## gogreenrichmond UPON THAMES





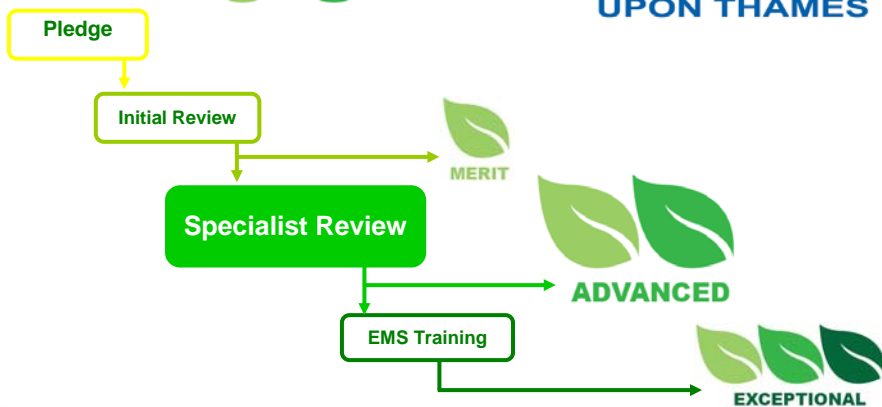
# Accreditation



## Merit Award

- Implement basic steps from Initial environmental review
- Monitor consumption

# gogreenrichmond UPON THAMES





# Specialist support



**CARBON TRUST**



**Thames Water**



**GROUNDWORK**  
CHANGING PLACES  
CHANGING LIVES



**Environment Agency**



**LONDON REMADE**  
*The business of recycling*



**sweltrac**  
*Building better transport networks for South and West London*



**envirowise** } SUSTAINABLE PRACTICES  
SUSTAINABLE PROFITS

---



**LONDON BOROUGH OF RICHMOND UPON THAMES**

19th June 2008



# Accreditation



**Advanced Award:**

- Implement improvements across two significant impacts
- Have quantifiable savings
- Visible commitment to environmental improvements

---



**LONDON BOROUGH OF RICHMOND UPON THAMES**

19th June 2008



## Accreditation

**Exceptional Award:**

- Progress towards objectives and targets
- Environmental Management System
- Community engagement

**gogreenrichmond**  
UPON THAMES

**EXCEPTIONAL**

This site has been awarded the Go Green Richmond Upon Thames three leaf exceptional award for improvements in our environmental performance

www.richmond.gov.uk/gogreen  
020 8891 7332  
gogreen@richmond.gov.uk

**R** LONDON BOROUGH OF  
RICHMOND UPON THAMES

19th June 2008

# Accreditation Certificates



19th June 2008

[www.richmond.gov.uk/gogreen](http://www.richmond.gov.uk/gogreen)



19th June 2008

**gogreenrichmond**  
UPON THAMES



Green Business Coordinator  
[sophie.maqsood@richmond.gov.uk](mailto:sophie.maqsood@richmond.gov.uk)



SUSTAINABILITY UNIT

19th June 2008

Ongoing involvement and next steps

Damian Price

## Involvement and next steps

- Attend quarterly network meetings
  - Update on progress and opportunities
  - Hosts for future meetings in September and December
  - Rotate chair for meeting
- By next meeting...
  - Cycling study?
  - TfL funding packages
  - Work towards all member organisations who want travel planning support, receiving support
  - Feasibility of car share scheme for Teddington Travel to Work Network
- Email list – emails sent collectively
- Electronic newsletter – your organisation's name listed as attendees
- Business consultation questionnaires

## Feedback and questions

Contact details for network lead:-

SWELTRAC  
Jakub Bojczuk  
020 8891 7665  
[J.Bojczuk@richmond.gov.uk](mailto:J.Bojczuk@richmond.gov.uk)