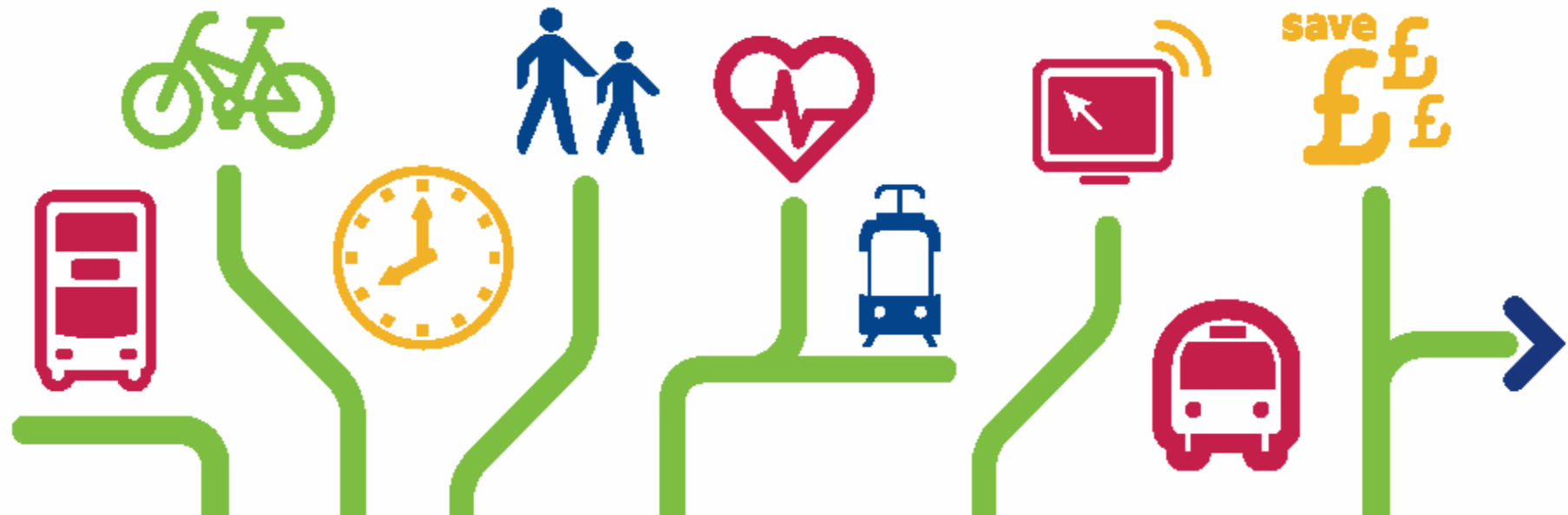


enterprise

Your ticket to a smarter, healthier,
more sustainable organisation



Transport and Business

- Businesses are reliant upon transport networks to;
 - receive goods, visitors and customers
 - travel to pursue of commercial opportunity
 - to ensure employees have ready access to their workplace and
 - that employers can tap into the best pool of labour to serve the firms' needs.



But...

- > In recent years British Chamber of Commerce surveys have found that transport issues are one of the most significant challenges facing businesses.
- > TfL developed **Enterprise** and **Corporate** to support businesses to make effective and efficient use of the transport options available to them.



enterprise

20 to 250 employees on the site

Corporate

250+ employees on the site

enterprise

anewwaytowork.org

So what's a travel plan?

- It's a strategy for;

“managing access to a site or development by a range of modes of transport, focusing on promoting access by sustainable modes”

Business Benefits

- Corporate social responsibility i.e. ISO14001
- Improve staff health, reduce absenteeism
- Reduce mileage claims and other travel costs
- Can reduce parking demand/traffic congestion
- Reduce costs of maintaining car parking spaces
- Improve corporate image with customers and community
- Increase staff punctuality
- Assist with recruitment and retention



Staff Benefits

- help provide less stressful options for travel to work
- increase opportunities to build healthy exercise into daily life
- can help reduce journey times
- ensure parking is available for those who need it
- can reduce travel costs
- improved employment conditions and work/life balance



What is 'Enterprise'?

- free expert travel planning service,
- survey and site assessment tools,
- a tailor-made workplace travel plan,
- incentives and merchandise,
- a range of practical measures relevant to your needs – cycle stands for your workplace or access to a car sharing scheme and
- access to match funding and information regarding tax benefits where applicable



Enterprise process...

- Company X contacts Enterprise by phone and an initial meeting is organised to work through company policy and ethos,
- Conducted a site audit,
- Carried out web based employee survey, which identified cycling as a 'quick win',
- Meet with company to review results and discuss options,
- Created a tailored Travel Plan, which sets out the travel solutions they decided to implement.



So what happens next?

- Implemented a cycling package
 - 20 free Sheffield stands
 - Up to £5000 match funding for a locked compound
 - Distributed cycle maps
 - Organised cycle training
 - Merchandise circulated to staff (cycle repair kits, rucksacks, water bottles...)



Plus...

- To support the cycling package, smarter working initiatives such as flexi-time, telecommuting (working from home) and teleconferencing meetings introduced.
- Ongoing support from Enterprise Rep and networking events.
- Follow up survey, next 'quick win' package introduced.



Case study

Inghams –Holiday Travel Company

- Under pressure from employees to improve the on site facilities for those wishing to cycle to work
- Keen to improve their green credentials as an organisation as far as possible
- Enterprise helped them to develop a Travel Plan
- Enterprise gave them access to funds for shower facilities



Corporate

In total, the Corporate support package is worth at least £20,000 to your organisation to help implement a workplace travel plan including:

- > Travel planning advice**
- > A quick-win implementation package**
- > Ongoing local support**

a new way
to work



Jakub Bojczuk

Travel Plan Coordinator
SWELTRAC
Civic Centre
44 York Street
Twickenham, TW1 3BZ

Phone: 020 8891 7665
Fax: 020 8487 5010

Email: j.bojczuk@richmond.gov.uk
Website: www.sweltrac.org.uk

enterprise

anewwaytowork.org

Join Enterprise...

Call: 0870 094 9011

Click: anewwaytowork.org

Email: enterprise@anewwaytowork.org

MAYOR
OF LONDON

Transport for London



enterprise

anewwaytowork.org