

Strategic Assessment 2009

Hollie Phillips

Intelligence Manager

Community Safety Partnership

Hollie.Phillips@richmond.gov.uk

0208 831 6201

Presenting the 2009 Strategic Assessment

- What is a Strategic Assessment?
- How will the Partnership use the findings of the 2009 Assessment?
- General performance and the key findings from the 2009 Assessment
- How the priority scoring matrix works
- Interim results of priority scoring matrix
- Stakeholder consultation exercise – what should the 2010/11 priorities of the Partnership be?

What is a Strategic Assessment?

- A paper that presents and interprets the findings of intelligence analysis
- It includes analysis of levels, patterns and changes to crime, disorder and substance misuse in the borough
- It is a Partnership assessment and includes analysis of data and expert information from a number of sources

Police

LBRuT council

NHS Richmond

Home Office

London Ambulance Service

London Fire Brigade

London Criminal Intelligence System

Community Safety Team

Problem Profiles



Strategic Assessment

Working Groups

Aim & Purpose

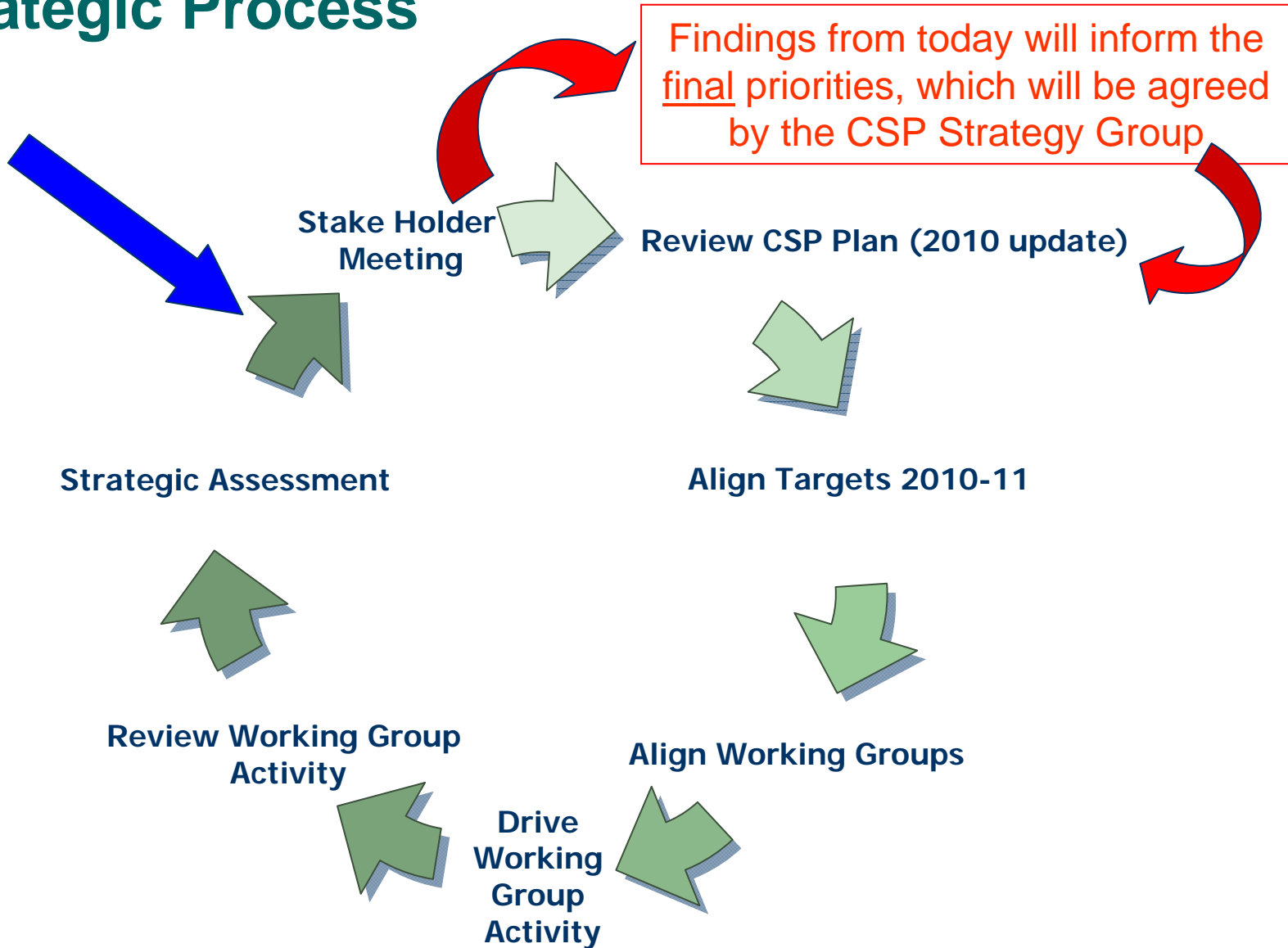
The aim ...

- is to assist the Strategy Group in revising the partnership plan by identifying crime disorder & substance misuse priorities for the next period

The purpose ...

- to enable partnership activity to be intelligence led and to concentrate limited resources on the most pressing problems

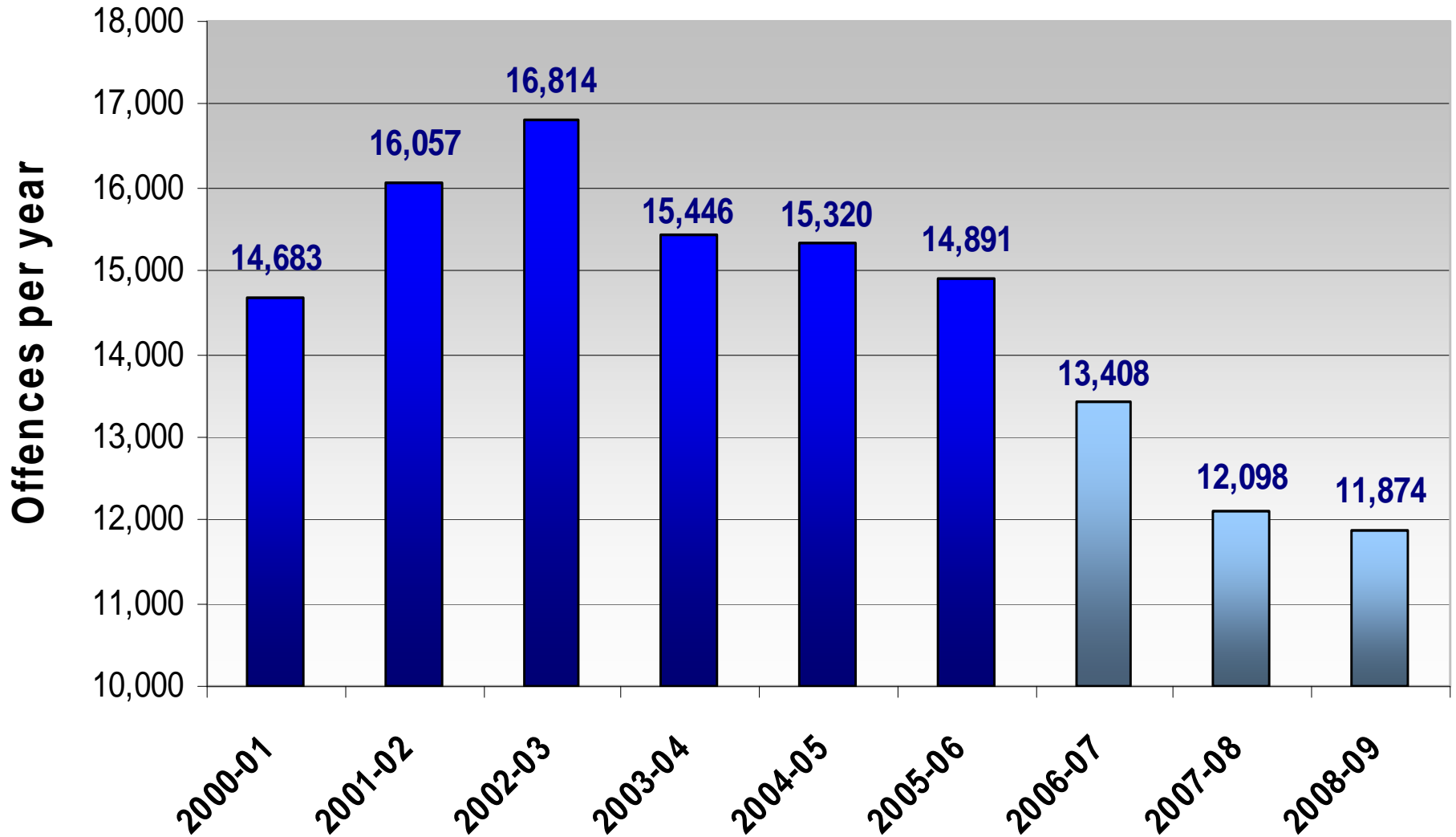
Strategic Process



Performance

- Richmond upon Thames continues to be London's Safest Borough
- During 2008/09, the borough had the lowest number of offences per one thousand population of the 32 London boroughs
- Richmond upon Thames is the fourth best performing borough for total crime in its 'group of most similar' Crime & Disorder Reduction Partnerships
- Between 2007/08 and 2008/09, total crime has reduced by a further 2% (n=215 crimes)

Total crime since 2000



NI 16 – Serious Acquisitive Crime (SAC)

- CSP 2008-11 target is to reduce SAC by 2.9%, with the burglary dwelling element being less than 1000 crimes during 2008/09 – **achieved 979**
- During 2008/09, the SAC crime rate was **reduced by 3%**
- Rate of 15.993 per 1000 population (2,878 offences), compared to a rate of 16.427(2,956 offences) in 2007/08

NI 20 – Assault with injury

- 2008/09 now a baseline year. Target for 2010/11 to reduce by 3% (630 offences 09/10, 620 offences 10/11)
- During 2008/09, the Assault with injury crime rate was 3.551 (639 offences)
- However, it is encouraging to note that Richmond Borough has the **lowest crime rate** for Assault with injury offences

Serious Knife Crime

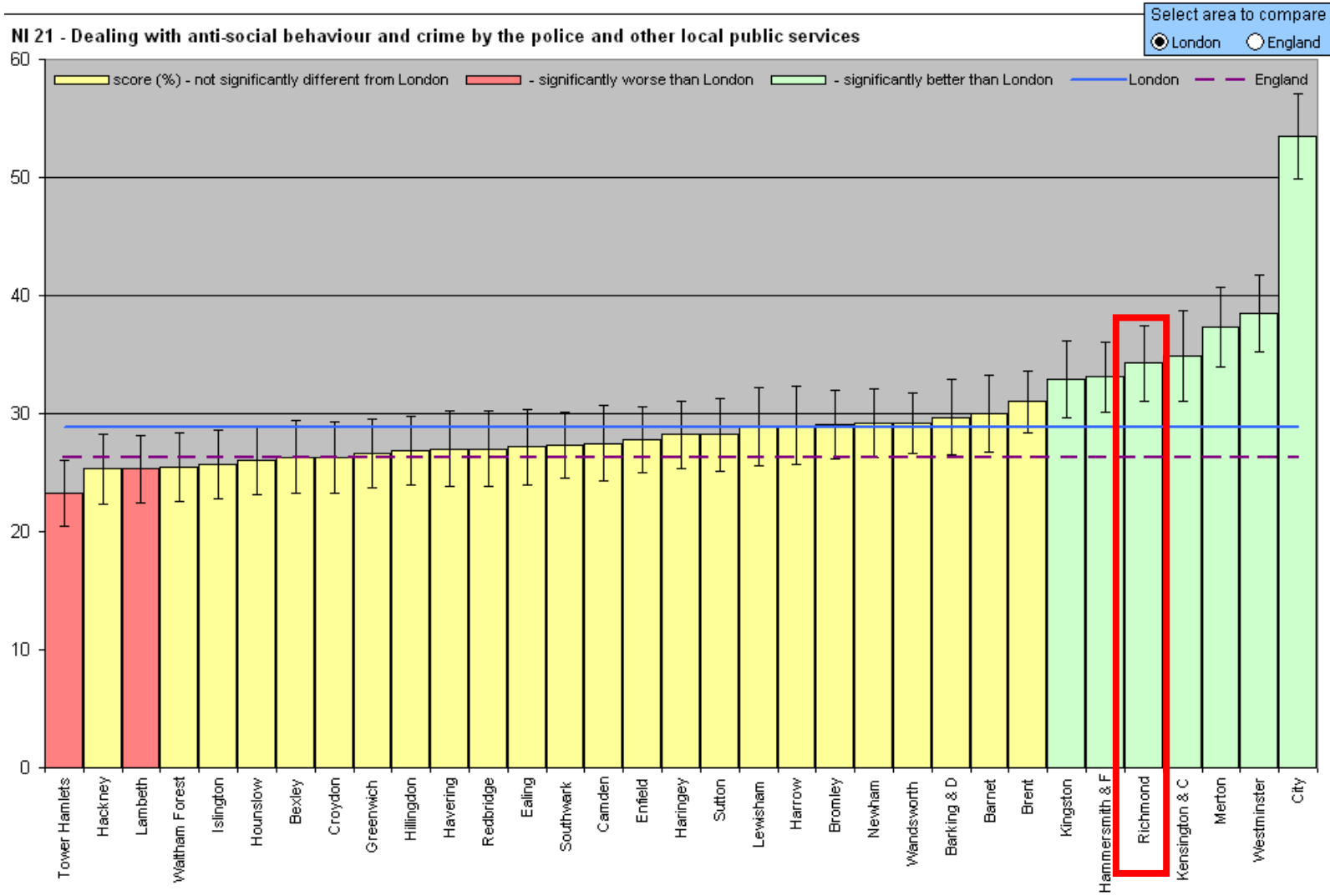
- The CSP 2008-11 target is to reduce serious knife crime by 5.2% by 2010/11.
- During 2008/09, knife crime reduced by **-31.2%**, from 109 offences in 2007/08 to 75 offences in 2008/09.

Serious youth violence

- The CSP target is to reduce Serious Youth Violence by 5% by 2010/11. 2008/09 is now a baseline year.
- The MPS target is to reduce Serious Youth Violence by 4.0% (to 75 offences in 2009/10).
- The MPS also has a Youth Violence target, which includes Assault with injury offences.
- During 2008/09, youth violence reduced by **-6.6%**, from 288 offences in 2007/08 to 269 offences in 2008/09.

NI 21 – Confidence in Police and Council partnership working

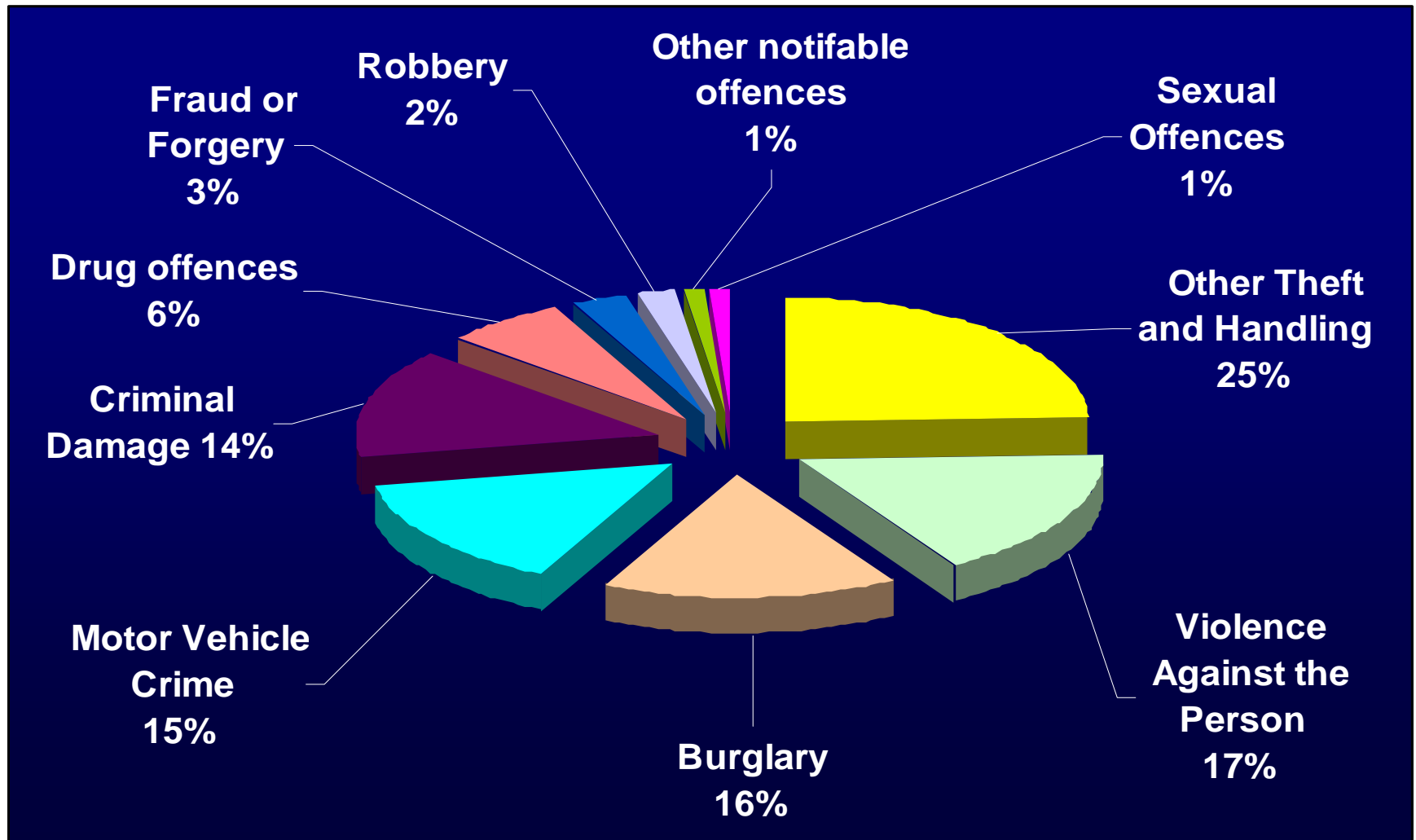
- Only a third of respondents believe that the police and local authority are successfully dealing with crime and ASB issues, **(34.3% agree)**
- Although these findings are not positive, they are above or in line with the average residents' views when compared to London (NI 21:28.8%) and the national average (NI 21: 26.7%)



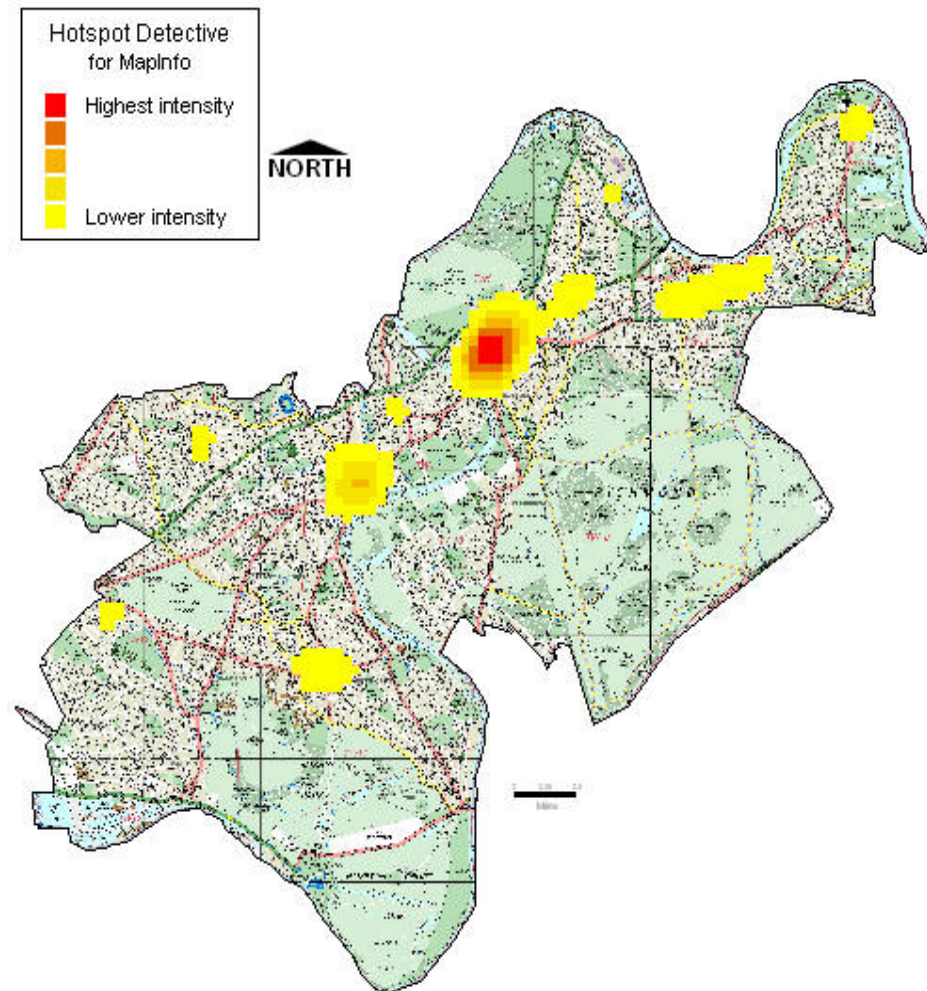
Description: % who strongly agree or tend to agree that the police and other local public services are successfully dealing with anti-social behaviour and crime in their local area (NI 21)

Crime overview 2007-2009	2007/08	2008/09	Number Change	% change
Violent crime	2,376	2,357	19	↓ 1%
Domestic Burglary	1,034	979	55	↓ 5%
Non Domestic Burglary	900	901	1	↔ 2%
Theft of Motor vehicle	394	380	14	↓ 4%
Theft from Motor vehicle	1,241	1,290	49	↑ 4%
Theft & handling (exc vehicle crime)	3,143	2,897	246	↓ 8%
Personal Robbery	263	203	60	↓ 23%
Business Robbery	24	26	2	↑ 8%
Theft of pedal cycles	642	599	43	↓ 7%
Criminal Damage	1,742	1,716	26	↓ 1%
Drug offences	738	765	22	↑ 4%
Total notifiable offences	12,098	11,883	215	↓ 2%

Volume of total crime by crime group 2008/09



- The 2008 Strategic Assessment identified the persistent hotspots for the borough to be the two town centres of Richmond and Twickenham.
- Together they accounted for **18%** of crime in the borough during 2007/08.
- During 2008/09 this decreased to **14%**



- Based on **2008 Priority Matrix**, the last strategic assessment recommended that priorities for the partnership to be:

Violence against the Person

Residential burglary

Motor vehicle crime

Antisocial behaviour

Alcohol

Drugs

Counter Terrorism

Violence – 2009 key findings

- Violent Crime in the borough has remained relatively stable (down **1%** from 2,376 offences to 2,357 offences)
- Assault with injury (27%), Harassment (24%) and Common Assault (22%) make up approximately **three quarters** of Violent Crime
- After Theft & Handling, **VAP is the second largest** contributor to total crime, followed by Burglary and Motor Vehicle Crime.
- Assault with injury makes up **29.2% of VAP**, confirming the need to make this priority that is reduced via the CSP target.
- 74.4% of VAP offenders were male (25.6% female). 57.2% of the VAP offenders were aged between 0-19.
- 56.9% of VAP victims were male (43.1% female). 55.1% of the VAP offenders were aged between 0-19.
- There are a disproportionate number of both Black and Asian victim and offenders
- Almost all residents feel safe during the day (95%) and a majority feel safe after dark (66% safe).

Youth crime – 2009 key findings

- During 2008/09, 290 under 17's were accused of 281 offences. During the same period, 535 under 17's were suspected of 513 offences.
- The majority of the under 17 accused committed Violence against the Person (22.1%) and Criminal damage (22.1%) offences.
- The majority of young offenders are male. The most common age range was 17 and 16 year olds.
- 48.5% of the accused young people were White European, followed by 31.0% African Caribbean. This is disproportionate to other crime types and the borough profile.
- Female accused young people are younger than males, with the age ranges of 14 and 13.
- Just over half (57.4%) of the accused young people had a home address in Richmond. 18.0% had a home address in neighbouring Hounslow, 6.9% in Wandsworth and 4.8% in Hammersmith.

Youth crime – 2009 key findings

- During 2008/09, 230 young people were victims of crimes committed by other young people.
- 25.7% of these were ABH & minor wounding, 23.9% were Robbery and 11.7%, were common assault.
- 5.7% were of the more serious violent offence of GBH with intent.
- 59.3% of the victims were male and 40.7% were female, which is more of an equal split when compared the offender profiles.
- 20.1% of the victims were aged 15 and 20.5% were aged 14, making victims of youth crime younger than the offenders.
- 57.6% of the victims were White European, 18.7% were Afro-Caribbean and 18.7% were Asian. Again, this is disproportionate to other crime types and the borough profile.

Domestic Abuse – 2009 key findings

- During 2008/09, 1996 domestic abuse reports were recorded, an increase of **7.4%** (n=137) on the last financial year. The number of reports as a whole has increased, but crimes have again reduced.
- There is an **11.6 %** increase in domestic abuse incidents which is a result of the Domestic Abuse forums work on increasing reporting.
- **25%** of VAP was flagged as domestic violence. 31.6% of Assault with injury offences were domestic, as were 35.0% of the Common Assault offences.
- 32.5% of victims were male. The Domestic Abuse forum has been encouraging male victims of domestic abuse to report incidents to the police.
- 72.9% of female victims have a male offender. In comparison, 13.6% of victims were males with female offenders.
- Asian victims account for 9%, Black victims 6%. This is disproportionate to the borough profile. A similar disproportionately is seen in the offender profile.
- Just over three quarters (76%) of the domestic abuse victims were aged between 18 and 44, which is consistent with previous years.

Residential Burglary – 2009 key findings

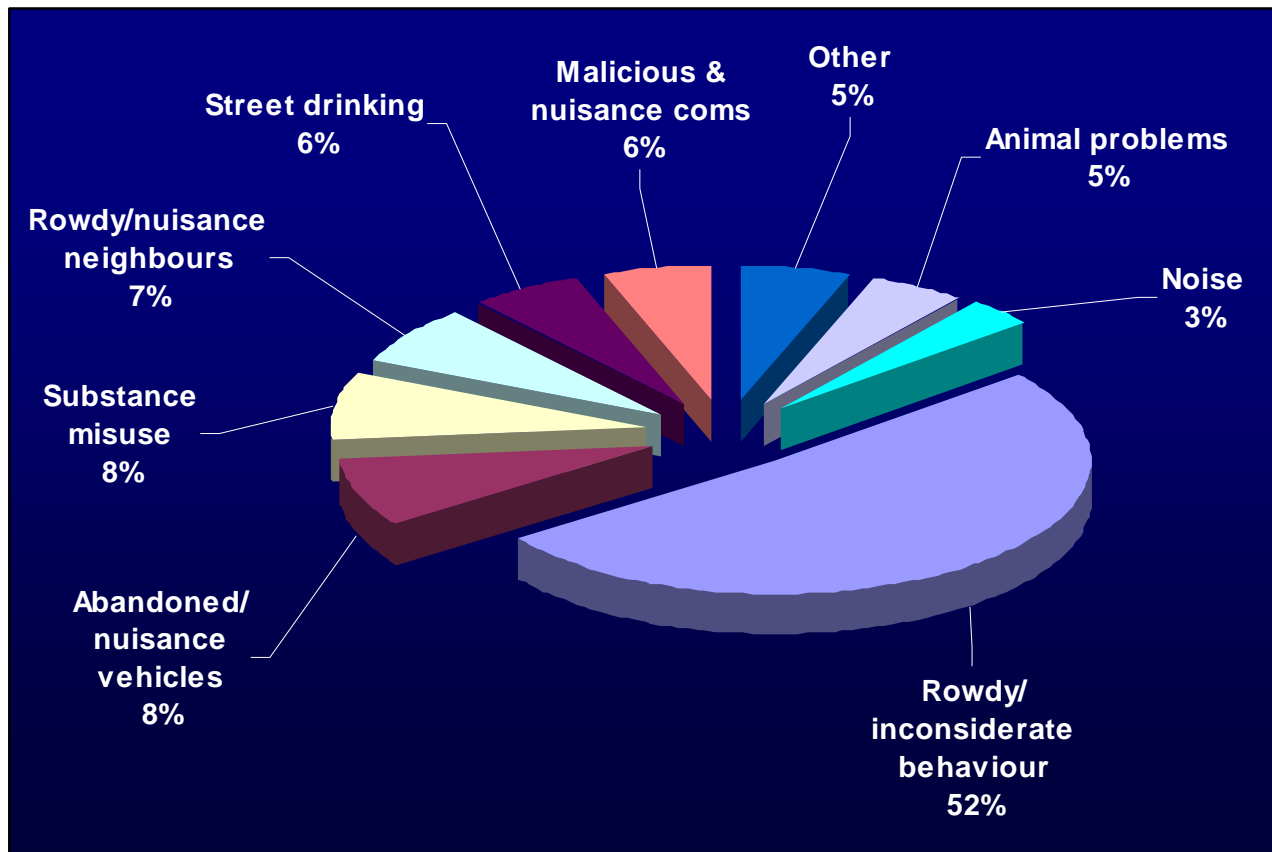
- There appears to be some relation between the wards on the Northern boundaries of TW and increased criminality.
- Autumnal rises of offences have become a long term seasonal trend on TW.
- There was a rise in June/July which may be down to the changes in weather and people leaving entry points open or insecure and another rise in March where it is thought end of year police activity on neighbouring boroughs had a negative impact on TW.
- Force was used in 40% of the offences, Open/Insecure made up 18%.
- Offenders generally took small portable items that could be easily re-sold.
- Analysis of offenders in 2008/09 shows that, of those accused of a residential burglary, most were from Hounslow and a large number came from Hammersmith.

Motor vehicle crime – 2009 key findings

- The hotspots for motor vehicle crime are South Richmond and Barnes & Mortlake and Barnes
- The most popular method to enter a car is by smashing the window.
- The second most likely entry is either by the offenders looking for an unlocked vehicle or entry unknown.
- Motorbikes, mopeds and scooters make up a large number of vehicles stolen on the ground.
- Most popular vehicles broken into include VW Golfs, BMW's, Ford Transit Vans and Ford Focus and Mercedes Benz.
- Sat Navs, Handbags/wallets, Number plates and Laptops are the most popular items stolen from a MV.
- These males mainly come from Richmond, Hounslow and Wandsworth

ASB – 2009 key findings

- During 2008/09, 5477 ASB incidents were reported to the police (decrease of **-5.7%** or 300 reports on 2007/08)
- Richmond borough continues to record the lowest level of ASB per 1,000 population, when compared to other MPS boroughs.



ASB – 2009 key findings

- Total reported ASB to the council has decreased by **8.8%** during 2008/09
- The largest category of fly-tipping has decreased by **4.9%** and there are also significant reductions in reports of Graffiti, Abandoned Vehicles and Dog fouling
- Total recorded ASB by the council has decreased by **25.5%** during 2008/09
- The largest category of Graffiti has decreased by 37.9% and there are also significant reductions in recorded nuisance vehicles. Recorded fly-tipping has increased significantly by **56.3%**
- The town centre wards of South Richmond and Twickenham Riverside reported the greatest number of ASB reports in 2008/09. Encouragingly both of these wards have either maintained levels or reduced them.

ASB – 2009 key findings

- London Fire Brigade recorded 90 arsons during 2008/09, a **30.8%** decrease.
- During the same 2008/09 period the police recorded 47 offences of Arson, an **88%** increase 2007/08.
- Of these 47 offences, 18 were arson to non-dwelling buildings, 13 were arson to other property, 7 offences of arson to motor vehicles and 6 offences of arson to a dwelling.
- During 2008/09, Criminal damage accounted for **14%** of total crime. Criminal damage is also showing a downward trend in both the long and short term.
- During 2008/09, 1737 Criminal damage offences were reported to the police. This is a **1.3%** decrease on 2007/08 when 1737 offences were reported.
- The greatest proportion of criminal damage is to motor vehicles (**48.8%** of criminal damage) and 5.7% of the borough's total number of offences.
- **63%** of the criminal damage suspects were aged between 12 and 17 years old

Drugs – 2009 key findings

- Drug offences make up 6% of the borough's total crime.
- 77% of these offences are Possession of Cannabis, followed by 7.5% Possession of Class A – Cocaine.
- 55%, of the borough's Problem Drug User population have been known to treatment in the past two years.
- 62% of clients accessing treatment are male, 37% female. The majority of clients accessing treatment in Richmond are aged between 35 and 49.
- Low numbers of 18-24 year olds currently accessing treatment service.
- Primary drug is heroin/other opiates, with significant numbers using powder cocaine and cannabis.
- Crack cocaine is the most significantly reported secondary drug.
- Using data provided by the Young People's Drug & Alcohol Support team, 35% of young people presented for Cannabis, 4% Cocaine, 1% Heroin.. There were no presentations Crack.
- There were 72 new referrals during 2008/09 to Young People's Drug & Alcohol Support

Alcohol – 2009 key findings

- Richmond upon Thames has the lowest level of alcohol related crimes in London 2008/09 (Public Health Observatory Report)
- There were just 6.51 crimes per 1000 population that were Alcohol related (1171 offences)
- For Violent Crime the rate was 4.14 per 1000 (745 offences) and for Sexual Offences the rate was 0.09 (15 offences)
- 7.8% of Domestic Abuse reports were Alcohol related
- There has been a 4% increase in Alcohol related Hospital admissions.
- The London Ambulance Service recorded 955 Alcohol related pick-ups from Richmond Borough during 2008/09.
- 50.3% of these were for Assaults (including 7 Sexual Assaults)
- There is a trend in Richmond for a higher number of alcohol referrals in comparison to drug referrals.

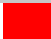





Prioritisation matrix

The following have been taken into consideration as part of the prioritisation matrix:

- **Volume**
- **Performance**
- **Trends**
- **Seriousness / risk**
- **Priority**
- **Generator**
- **PESTELO** (political, economic, social, technological, environmental, legal and organisational)

2009 Prioritisation Matrix results

	Crime / Problem Type	Volume	Performance	Trends	Seriousness	Priority	Generator	PESTELO	Total
	Violence (VAP)	4	1	2	4	3	2	4	20
	Youth Violence / SYV	1		1	4	3	2	3	14
	Sexual Offences	1	3	2	4	2	1	3	16
	Domestic Abuse	3	2	2	4	1	1	4	17
	Hate Crime (exc DV)	1	4	1	2	1	3	2	14
	Gun Crime	1	2	0	4	2	3	1	13
	Knife Crime	1	3	2	4	3	3	2	18
Serious Acquisitive Crime	Residential Burglary	3	1	0	2	4	2	2	14
	Motor Vehicle Crime	4	1	2	2	4	2	3	18
	Personal Robbery	1	0	0	4	4	2	2	13
	Commercial Robbery	1	0	1	4	4	3	2	15
Other Property Crime	Non Residential Burglary	3	1	2	1	0	1	2	10
	Other Theft	4	4	0	0	0	0	2	10
	Theft from shops	3	2	1	0	0	0	2	8
	Theft Person	1	3	1	2	0	0	2	9
	Pedal Cycle Theft	3	3	1	1	0	0	2	10
	Fraud	1	3	2	1	0	3	2	12
	Criminal Damage	4	0	0	1	0	3	2	10
	Anti-social behaviour	4	2	3	0	1	3	4	17
Cross cutting theme	Drugs	3	0	3	2	0	4	3	15
	Alcohol	4			2	0	4	3	13
	Terrorism	0	0	0	4	1	4	3	12

4		Very High concern
3		High concern
2		Concern
1		Of less concern
0		Low concern
?		No / insufficient data

Acknowledgements and thank you

- Rebecca Kimble – MPS Higher Intelligence Analyst
- Philip Cockle – MPS Citizen Focus Administrator (raw data)
- Sean Flynn – MPS Intelligence Analyst
- Wendy Christy - MPS Intelligence Analyst
- Sarah Darcy and Luke Patterson – NHS Richmond
- Claude Kelly - Young People's Drug and Alcohol Support
- Natasha Allen – Community Safety Manager
- Paul Davie – LBRuT GIS Project Manager
- Steve Frogen – London Analysis Support Site
- Community Safety Partnership Team

Conclusion

- The Borough is currently on target to meet the 3-year targets for 2008-2011
- The CSP and stakeholders should continue to direct resources (both financial and staffing) towards the following THEMES:

Violent against the person
Serious Acquisitive Crime
Anti-social behaviour

Alcohol
Drugs
Counter Terrorism

What should the 2010/11 priorities of the Partnership be?

Stakeholder prioritisation exercise to establish what the actual priorities should be under the six THEMES

There are four exercises – 15 minutes:

- Prioritisation within VIOLENCE
- Prioritisation within ASB
- Prioritisation within PROPERTY CRIME
- Top two priorities and why

Thank you for participating on behalf of the community you represent. The results will be analysed and reviewed against the results of the 2009 Strategic Assessment to finalise the Community Safety Priorities for 2010/11 and beyond.

The full Strategic Assessment document will be available online in the New Year (following the agreement of the 'Priorities' by the Community Safety Partnership Strategy Group)

www.richmond.gov.uk/community_safety_partnership