

LBR

Contents

- LBR..... 1
- Contents..... 2
- CED - Senior Management..... 3
 - ASD - Senior Management..... 4
 - CED - Senior Management..... 5
 - CED - Senior Management..... 6
 - ECS - Senior Management..... 7
 - HRD - Senior Management Structure..... 8
 - RES - Senior Management..... 9
- Index..... 10

Mark Maidment
Chief Executive
Mark.Maidment@richmondandwandsworth.gov.uk
SSA Hay 1
Permanent
CED - Senior Management
Chief Executive Directorate

284896

£90,000-£94,999

Liz Bruce
Director of Adult Social Care and Public Health
SSA Hay 2
Permanent
ASD - Senior Management
Adult Social Care and Public Health Directorate

204955

£60,000-£64,999

Jon Evans
Assistant Chief Executive (Policy and Performance)
Jon.Evans@richmondandwandsworth.gov.uk
SSA Hay 3
Permanent
CED - Senior Management
Chief Executive Directorate

151165

£50,000-£54,999

Ian Dodds
Joint Director of Children's Services (Richmond and Kingston)
Ian.Dodds@richmondandwandsworth.gov.uk
SSA Hay 2
Permanent
CED - Senior Management
Chief Executive Directorate

204955

£145,000-£149,999

Paul Chadwick
Director of Environment and Community Services
Paul.Chadwick@richmondandwandsworth.gov.uk
SSA Hay 2
Permanent
ECS - Senior Management
Environment and Community Services Directorate

204955

£65,000-£69,999

Brian Reilly
Director of Housing & Regeneration
SSA Hay 2
Permanent
HRD - Senior Management Structure
Housing and Regeneration Directorate

204955

£80,000-£84,999

Fenella Merry
Director of Resources
Fenella.Merry@richmondandwandsworth.gov.uk
SSA Hay 2
Permanent
RES - Senior Management
Resources Directorate

204955

£60,000-£64,999

Liz Bruce
Director of Adult Social Care and Public Health

SSA Hay 2
Permanent
ASD - Senior Management
Adult Social Care and Public Health Directorate

204955

£60,000-£64,999

Derek Oliver
Assistant Director - Commissioning and Quality Standards
Derek.Oliver@richmondandwandsworth.gov.uk

SSA Hay 3
Permanent
ASD - Senior Management
Adult Social Care and Public Health Directorate

151165

£55,000-£59,999

Jeremy DeSouza
Assistant Director - Business Resources
Jeremy.DeSouza@richmondandwandsworth.gov.uk

SSA Hay 3
Permanent
ASD - Senior Management
Adult Social Care and Public Health Directorate

151165

£55,000-£59,999

Shannon Katiyo
Director of Public Health
Shannon.Katiyo@richmondandwandsworth.gov.uk

SSA Hay 3
Permanent
ASD - Senior Management
Adult Social Care and Public Health Directorate

151165

£50,000-£54,999

Jon Evans
Assistant Chief Executive (Policy and Performance)
Jon.Evans@richmondandwandsworth.gov.uk
SSA Hay 3
Permanent
CED - Senior Management
Chief Executive Directorate

151165

£50,000-£54,999

Sarah Sturrock
Director South London Partnership
Sarah.Sturrock@richmondandwandsworth.gov.uk
Assistant Director 2
Permanent
ACS Comm Corp Pol & Strategy
Central Departments LBR

111736

£80,000-£84,999

Ian Dodds
Joint Director of Children's Services (Richmond and Kingston)
Ian.Dodds@richmondandwandsworth.gov.uk
SSA Hay 2
Permanent
CED - Senior Management
Chief Executive Directorate

204955

£145,000-£149,999

Alison Twynam
Director of Children's Social Care
Alison.Twynam@achievingforchildren.org.uk
Assistant Director 2
Permanent
ECCS Department
ECCS Department

111736

£110,000-£114,999

Paul Chadwick
Director of Environment and Community Services
Paul.Chadwick@richmondandwandsworth.gov.uk
SSA Hay 2
Permanent
ECS - Senior Management
Environment and Community Services Directorate

204955

£65,000-£69,999

Kevin Power
Deputy Director of Environment & Community Services
Kevin.Power@richmondandwandsworth.gov.uk
SSA Hay 3
Permanent
ECS - Senior Management
Environment and Community Services Directorate

151165

£65,000-£69,999

Nick O'Donnell
Assistant Director of Environment & Community Services (Traffic & Engineering)
Nick.O'Donnell@richmondandwandsworth.gov.uk
SSA Hay 3
Permanent
ECS - Senior Management
Environment and Community Services Directorate

151165

£50,000-£54,999

Brian Reilly
Director of Housing & Regeneration

SSA Hay 2
Permanent

HRD - Senior Management Structure
Housing and Regeneration Directorate

204955

£80,000-£84,999

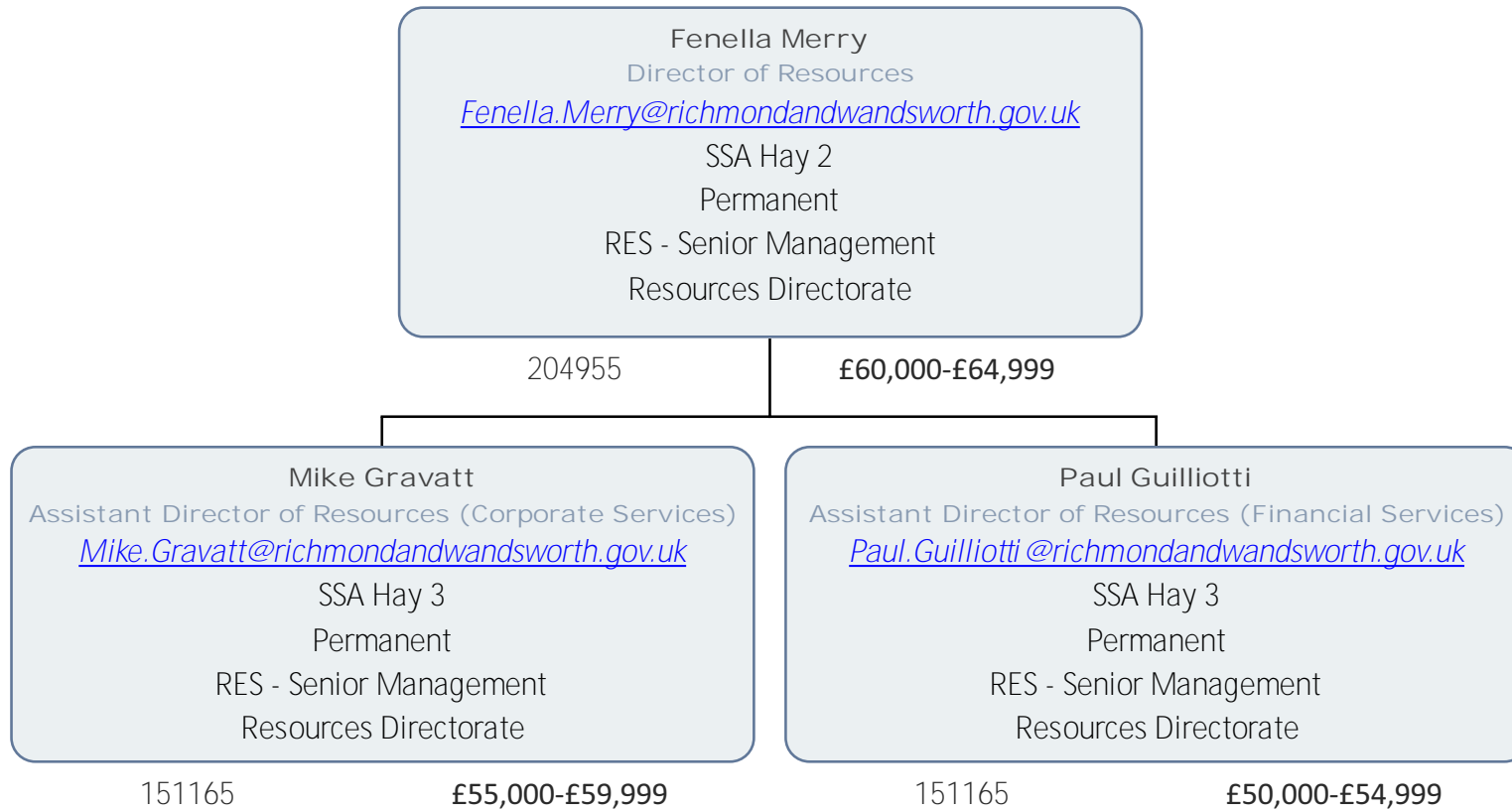
Dave Worth
Assistant Director (Housing Services)
Dave.Worth@richmondandwandsworth.gov.uk

SSA Hay 3
Permanent

HRD - Senior Management Structure
Housing and Regeneration Directorate

151165

£50,000-£54,999



Index

Liz Bruce.....	3, 4	Fenella Merry.....	3, 9
Paul Chadwick.....	3, 7	Nick O'Donnell.....	7
Jeremy DeSouza.....	4	Derek Oliver.....	4
Ian Dodds.....	3, 6	Kevin Power.....	7
Jon Evans.....	3, 5	Brian Reilly.....	3, 8
Mike Gravatt.....	9	Sarah Sturrock.....	5
Paul Guillioti.....	9	Alison Twynam.....	6
Shannon Katiyo.....	4	Dave Worth.....	8
Mark Maidment.....	3		