

# Richmond Council says Close the Door!

## About Close the Door

Close the Door is a business-friendly voluntary campaign working to get shops to close the door when using heating or aircon on the high street. This will keep customers and staff comfortable, cut energy usage by 50%, save money and improve air quality!

## Here's why closing the door makes sense for retailers:

- Enhances **staff and customer comfort** through better internal temperatures and **improved air quality**.
- **Reduces negative health impact** of bad air quality inside the shop from diesel fumes on the high street.
- Reduces energy usage and energy costs by up to **50%**.
- Cuts a shop's CO<sub>2</sub> emissions by up to **10 tonnes/year** = 3 return London/Hong Kong flights or 31,000 car miles.
- Allows energy use to be kept at a **consistent low level** – a hot shop means customers in coats are too hot.
- Any access issues can be resolved by **attentive staff** on hand to help with pushchairs or wheelchairs etc.
- **Reduces shop lifting** and is safer for any small children in the shop.
- Stops need for "air curtains" over the door: a single one consumes 24 kWh per day. This is equivalent to emitting 91 kg CO<sub>2</sub> per week, or **more emissions than a return Glasgow/London coach trip**.
- Internal research on footfall conducted by Vodafone and Neal's Yard shows no adverse effects.

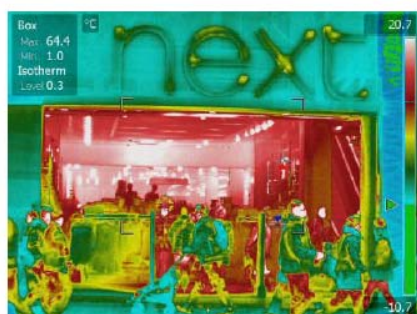


## Supporters

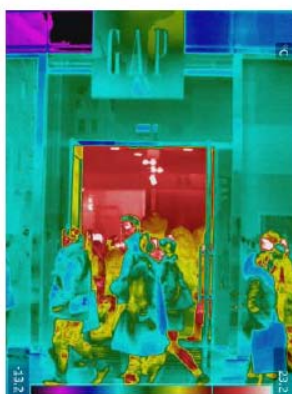


- Over **500** shops in Cambridge where the campaign began and **many more** in centres across the UK.
- Broad cross party political support and endorsements from Ed Davey, Boris Johnson, Vince Cable, William Hague, Zac Goldsmith, Cllr Fleming etc.
- Welsh, Scottish and London Assemblies, local councils: Bath, Birmingham, Bristol, Cambridge, Guernsey, London (City of London, Camden, Islington, Kingston, Richmond upon Thames, Wandsworth, Westminster).
- A growing presence and following on *Facebook* and *Twitter*.

Request a door sticker or open/closed door sign to welcome customers: [gogreen@richmond.gov.uk](mailto:gogreen@richmond.gov.uk)



Heat in red, floods out of open doors at a shop on Oxford Street, London



Stores like this can generate an extra 10 tons of CO<sub>2</sub> each year if doors are left open



Open doors such as these can double a shop's energy use.