

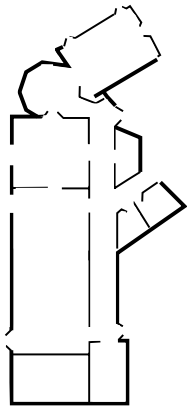
York House is a fine 17th century building with a fascinating history set in beautiful grounds on the banks of the Thames. The following rooms are available for hire and are suitable for a variety of functions.

The [ ] and [ ] are suitable for weddings, concerts, musicals, plays, fairs and large meetings. The rooms are licensed for public music, dancing and [ ]

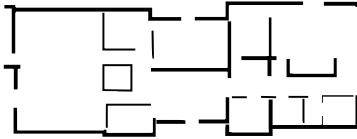
[ ] stage plays. [ ], the [ ] and [ ] are suitable for receptions and meetings but music and dancing are not permitted. The [ ] has access to the gardens. The [ ] is suitable for meetings and seminars. All rooms can be hired in conjunction with each other to suit your requirements.

- The Terrace Room and Salon can be hired for marriage ceremonies. Please see separate leaflet for details.

*The Clarendon Hall*



*York House*



*The Terrace Room*

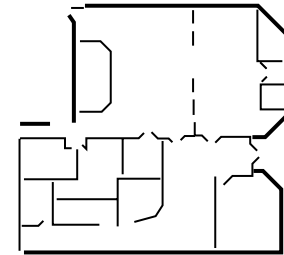
*The Salon*

**AVAILABILITY**

Clarendon Hall  
Hyde Room

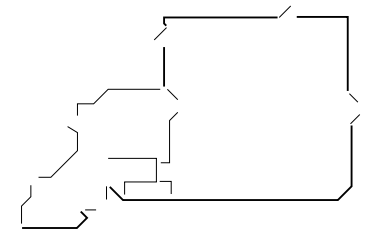
The Salon  
Terrace Room  
Council Chamber

This modern purpose built community hall offers excellent facilities suitable for a wide variety of functions. There is a large hall which can be divided into two smaller areas. This flexibility makes it ideal for concerts, meetings, dinner dances and exhibitions.



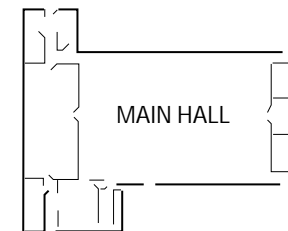
**AVAILABILITY**

This is a modern purpose built hall with good quality facilities. Ideal for meetings, children's parties and small family functions.



**AVAILABILITY**

Murray Park Hall is situated in the grounds of Murray Park. It is an ideal venue for community groups, meetings, children's parties and family functions.



**AVAILABILITY**

**For bookings and further information contact: The Lettings Officer, Environmental Protection & Customer Services, Civic Centre, 44 York Street, Twickenham TW1 3BZ Tel: 020 8831 6108 email: j.pattenden@richmond.gov.uk**

**Please see overleaf for further details**

# VENUES FOR HIRE

*in the London Borough of Richmond upon Thames*



LONDON BOROUGH OF  
RICHMOND UPON THAMES

If you would like a copy of this leaflet in Braille, large print, on audio tape, or in a community language, please contact the Communications and Media Unit on  
**020 8891 7162**

| Halls                    | Dimensions  | Capacity<br>theatre style | Capacity<br>at tables | Facilities  |
|--------------------------|-------------|---------------------------|-----------------------|---|
| <b>Sheen Lane Centre</b> |             |                           |                       |   |
| Main Hall                | 19m x 14m   | 300                       | 200                   | Kitchen, bar area, stage, piano, amplification equipment, induction loop. |
| Hall Divided- Area A     | 7m x 14m    | 100                       | 80                    | Kitchen, bar/reception area,  |
| Hall Divided -Area B     | 12m x 14m   | 160                       | 120                   | Kitchen, bar/reception area, stage, piano, equipment                      |
| Bullen Hall              | 8.5m x 8.5m | 55                        | 40                    | Kitchen   |
| Murray Park              | 14.5 x 10.5 | 120                       | 100                   | Kitchen, car park   |

**All rooms are on the ground floor including toilet facilities and are accessible for wheelchairs**