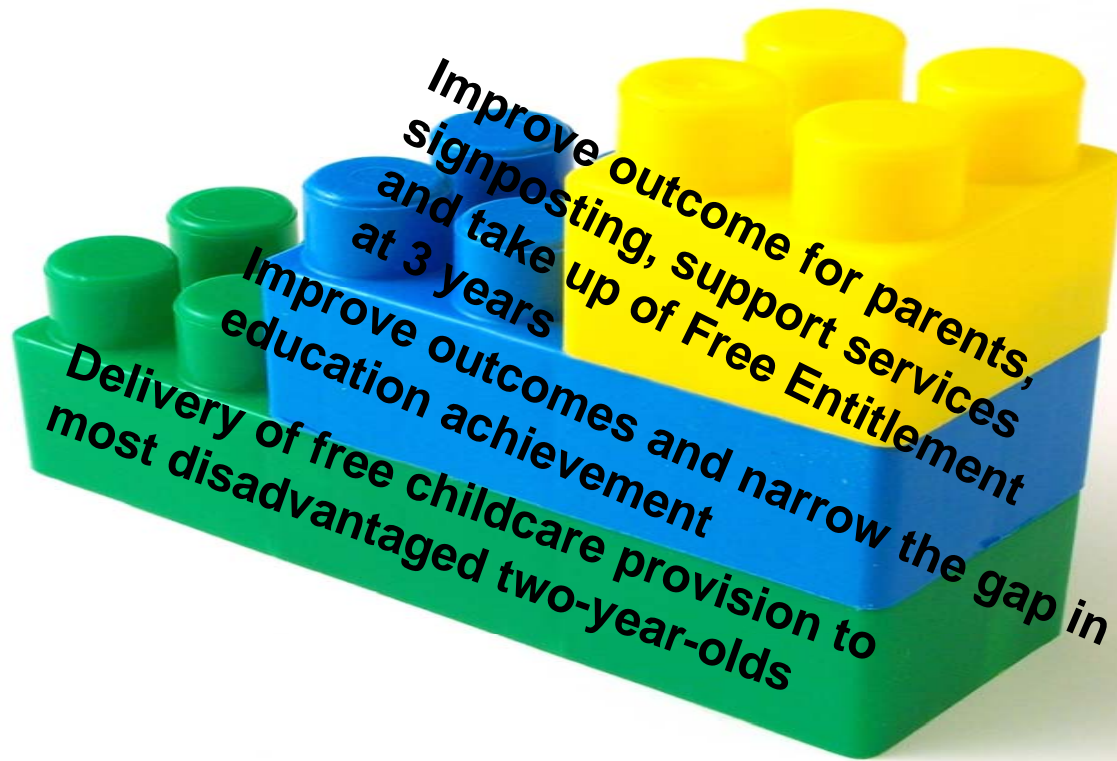


2 Year Old Free Childcare Offer



Aims of the offer



Target and eligibility criteria

Funding was allocated for 50 children per term to attend a childcare setting for 10 hours per week, 38 weeks per year, over 5 terms from September 2009 when the pilot began to its end in March 2011

Families were required to be in receipt of certain benefits in order to be eligible for a place on the pilot.

- Income support
- Income based Job Seekers allowance
- Child Tax Credit high than the family rate
- Extra Working Tax Credit Relating to a Disability or Pension credit

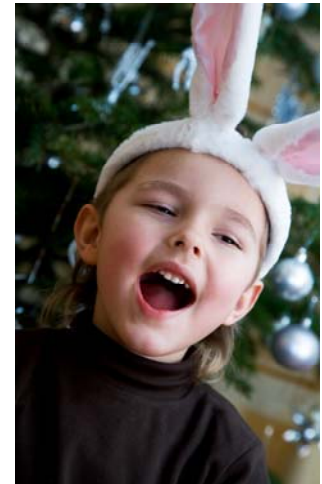
One of these benefits was enough to qualify for a place, and information was recorded on any additional child characteristics or needs. These were used to make decisions where there was competition for a place

Starting the provision

- 119 children have received funding for up to 38 weeks a year
- 2 Year Olds Outreach Worker met the families and in many cases were supported to visit the setting with the family.
- The referrer was asked to discuss with the nursery manager any relevant family background that could be shared
- A settling in period was recommended to all families before children continued and providers were asked to keep the 2YROW up to date on attendance and any issues that arose.

Support for Providers

- In January 2010 family learning money was allocated to 32 settings on the pilot to support parents and carers understanding of their child's learning and development
 - funding external healthy eating or safeguarding workshops
 - purchasing story sacks and dress ups, CD's and stories, puppets etc which could be loaned to encourage interaction at home.
- Each setting also undertook an ITERS (Infant Toddler Environment Rating Scale) to look at the quality of the environment with up to £1100 to support recommendations



Signposting and Outreach – Summer 2010 packs

- Quindrat library sessions encouraging families to join and develop their child's interest in books, stories and other resources
- Children's Centre sessions encouraging parents to learn about the services they offered and the support available.
- Visits to Twickenham Scrapstore to gather items to create and explore and support their child's development at home.
- The packs also contained Carbon Monoxide Testers, wall height charts, 'Play Together' DVD's, FIS bookmarks, information on toy libraries, and a feedback slip.
- Resulted in parents signing up for courses, Wishes mentoring scheme and valuable feedback received on their interests/needs

Communication Friendly Spaces (CFS)



Looks at a child's environment, how they interact with it and how supporting this can improve communication skills.

Providers in the borough have been trained to look at their settings from a child's perspective to recreate their environment to suit individual and group needs, considering colour, light, storage, accessibility inside and outside.



Following a 2 day training course I approached the pilot parents to offer them 1:1 sessions at home using the Bags for Families.

These bags ranged in contents from blankets, sheets, pegs, shaped boxes, torches, cushions, baskets, cargo nets to half size tents.

Communication Friendly Spaces (CFS) continued



Sessions allowed children to explore the contents/materials, a starting place to discuss their child and for parents/children to interact positively together and have fun!

Families could loan different bags and were shown how to use household objects in the same way

PEEP – Peers Early Education Partnership

- 34 families (over 50 children) came to PEEP sessions at all 5 children centres, including 16 pilot families.
- Through a talk time, stories, songs and rhymes, joint activities and take home packs PEEP enabled parents/carers to gain advice, support and ideas for interacting with their children and using everyday opportunities to do this
- Topics included



Session 1



Session 2



Session 3



Session 4



Session 5

PEEP Feedback

Parents commented that PEEP sessions made them try things at home, be closer to their children, and use everyday opportunities more positively

They also felt reassured that they were doing a good job as parents/carers

Analysis of the pilot

- Quindrats equally represented by numbers of children referred except Kew/Barnes/Mortlake/East Sheen 8% of all referrals
- 78% of children on 2YRO are placed in the same quindrat that they live. 18% attend a setting outside of their quindrat and 4% attend a setting outside of the borough (Hounslow bordering and Brent due to parents work).
- 55 % referrals from Health visitors, 57% of funded places are for boys
- 24% of families are eligible due to low income only, 29% are on more than one of the listed benefits. Therefore a large majority of those supported by the pilot are disadvantaged families in terms of social *and* economic wellbeing.

Autumn 2009	31
Spring 2010	50
Summer 2010	50
Autumn 2010	59*
Spring 2011	35

- 36 providers have been on the pilot.
- 28 of these are nursery settings in the borough (3 are outside of the borough)
- 5 of these are childminders (of which 1 is out of borough)
- 9 settings have 1 child placed with them, 10 have more than one child and 7 have more than 4 on the pilot.

The future of funding 2 Year Olds

- 14 children are due to go onto NEG in April 2011, 28 in September 2011 and 7 in January 2012.
- A bid has been put forward to secure funding for those moving to NEG in September 2011 and January 2012 (past the pilot)
- A further allocation to fund 20 places from April 2011 to April 2012 has been bid for

Thank you

The pilot has been a huge success and nearly 120 families have been able to see their children progress in confidence, independence, security and watched them form positive relationships with adults and other children.

We really appreciate all your support and patience

Thank you so much

