

# Appendix 1: Climate Change Strategy

---



## Contents

<b>1.</b>	<b>FOREWORD</b>	<b>2</b>
<b>2.</b>	<b>INTRODUCTION</b>	<b>2</b>
<b>3.</b>	<b>GOVERNANCE</b>	<b>2</b>
<b>4.</b>	<b>TACKLING CLIMATE CHANGE</b>	<b>4</b>
	4.1 Corporate	4
	4.2 Services	5
	4.3 Schools	6
	4.4 Community	7
<b>5.</b>	<b>MONITORING AND DELIVERY</b>	<b>8</b>
<b>7.</b>	<b>ABBREVIATIONS AND FURTHER INFORMATION</b>	<b>8</b>

## 1. Foreword

Climate change is emerging as one of the major challenges facing the world in the 21st Century. The London Borough of Richmond upon Thames recognises this and in 2006 we pledged to take action by signing the Nottingham Declaration on Climate Change. This document builds on that commitment and outlines our response, setting out a range of measures which aim to reduce emissions of greenhouse gases and raise awareness of the need to do so. It provides the basis for a strategic and joined-up approach to the challenge of climate change based on a thorough understanding of energy use, greenhouse gas emissions and likely impacts of climate change in the borough. Our vision is to make Richmond upon Thames the greenest borough in London and we are committed to working in partnership with the local community to achieve this.

*(To be signed)*

Cllr Serge Lourie  
Leader of the Council

## 2. Introduction

The need to address climate change is urgent. There is now a strong consensus amongst scientists that anthropogenic emissions of greenhouse gases, which absorb and trap heat in the Earth's atmosphere, is causing the climate to change at an unprecedented scale and speed. The observed warming of the atmosphere and ocean over the last 50 years has taken the global temperature outside the range of natural variability as simulated by climate models. The latest predictions suggest that globally temperatures could rise between 1.1°C and 6.4°C and sea levels between 18cm and 59cm by 2100<sup>1</sup>. Regional variations can be even greater. The UK will experience progressively warmer and drier summers, wetter and milder winters and more frequent extreme weather, particularly heavy rainfall and heat waves. Whilst all areas of the UK will experience significant climate change, the greatest changes in weather will be in the south and east of the country. London, in particular, will be very vulnerable due to the significant proportion of development on the floodplain of the river Thames and the urban heat island effect.

There is no doubt that humans are causing the climate to change – the only uncertainty that remains is the extent of future change. This evidence is accepted by the political administration of the London Borough of Richmond upon Thames. It believes that the Council and other local authorities have an important role to play in tackling climate change – both in terms of reducing their own impact and also by engaging, enabling and encouraging communities to take action. In addition to the moral imperative and legislative framework, action on mitigating climate change will also benefit the council and its communities through lower energy bills, increased energy security, improvements in air quality, enhanced living and working conditions (including reduced levels of fuel poverty) and new low carbon economic opportunities. Adaptation measures will help minimise the risks while others will help businesses and communities take advantage of the opportunities presented by a changing climate.

The priority in this strategy is on reducing emissions of carbon dioxide (CO<sub>2</sub>), the principal greenhouse gas, to help mitigate climate change. Work is progressing on responding to the likely impacts of climate change and this will be incorporated when the strategy is reviewed and updated next year.

## 3. Governance

A Climate Change Strategy Programme Board (CCSPB) has been established to coordinate the development of this strategy which covers the following four areas of influence: the council as an organisation, as a service provider, as a local education authority and as a community leader. Working groups have been set up in three of the four areas. A description of each is provided in Table 1. The role of the working groups is to enable effective decision-making and facilitate partnership working across departmental and organisational boundaries.

Area of influence	Working Group	Description
As an organisation	Carbon Management Steering Group	The Carbon Management Steering Group (CMSG) is responsible for the introduction of more sustainable policies and practices for energy use across the corporate estate. Throughout 2007-2008 the CMSG participated in Phase 5 of the Local Authority Carbon Management Programme facilitated by the Carbon Trust to develop a carbon management Strategy and Implementation Plan (SIP). The SIP will be updated on an annual basis.

<sup>1</sup> Intergovernmental Panel on Climate Change (2007) Climate Change 2007: The Physical Science Basis: [http://ipcc-wg1.ucar.edu/wg1/Report/AR4WG1\\_Print\\_SPM.pdf](http://ipcc-wg1.ucar.edu/wg1/Report/AR4WG1_Print_SPM.pdf)

Area of influence	Working Group	Description
As a service provider	<i>To be established</i>	The services working group will be responsible for coordinating and promoting sustainability through the provision of public services and effective use of regulatory power. This includes the following areas: development, home energy advice, fuel poverty, work with businesses, travel and waste.
As a Local Education Authority	Schools Environment Forum Executive	The Schools Environment Forum Executive seeks to promote and coordinate the implementation of sustainability policies and practices in local schools. It is designed to build on, signpost and complement existing initiatives (such as Eco-Schools) in order to facilitate action across each of the eight 'doorways' identified in the DCSF National Framework for Sustainable Schools. The focus will be on embedding climate change and wider sustainability issues into the curriculum, non-formal learning environment, institutional practices (i.e. estate management) and the wider school community.
As a community leader	Greener Richmond	Effective management of the causes and consequences of climate change in Richmond requires an integrated, co-ordinated and community-wide response involving partners in the local business, housing, transport, public, voluntary and community sectors. Greener Richmond has been set up as a subgroup of the Richmond Local Strategic Partnership (RLSP) to promote and enable the necessary partnership working.

Table 1: Description of working groups

The Schools Environment Forum Executive and Greener Richmond are partnerships with external agencies and have a wider remit than the focus of this strategy. Both have the aim of promoting sustainability across a much broader range of issues. All working groups report to the CCSPB (Figure 1). In the case of the Schools Environment Forum Executive and Greener Richmond this will be to monitor and review the effectiveness of the Council's contribution. The CCSPB takes a strategic overview of opportunities for reducing carbon emissions and adapting to the impacts on climate change and seeks to integrate climate change in the development and implementation of all relevant strategies, plans and policies within the council, ensuring all service areas share a common understanding of, and appreciation for, the need to take action on mitigating and adapting to climate change. The CCSPB meets quarterly to review the progress made by all working groups and respond to any issues that arise.

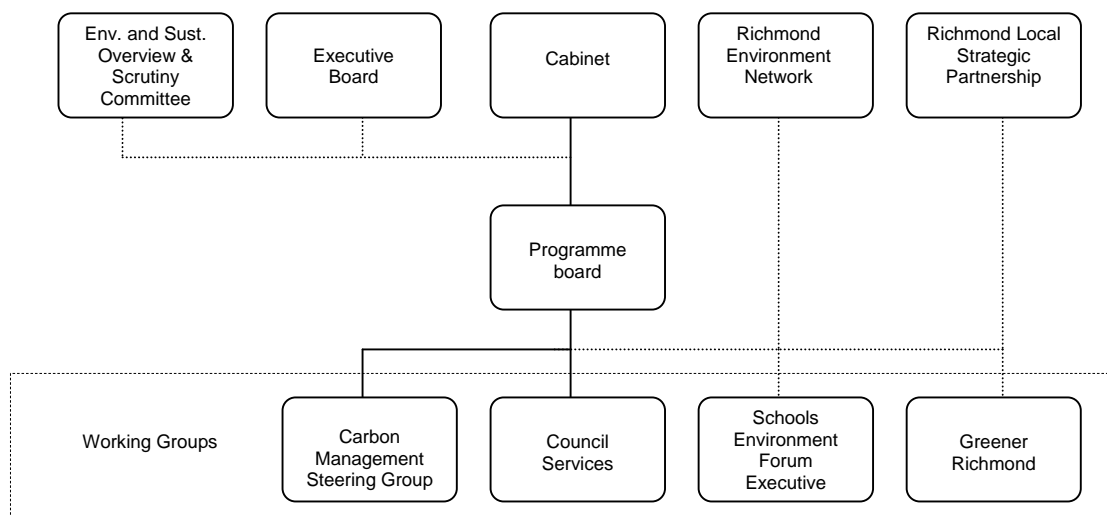


Figure 1: Governance arrangements

## 4. Tackling climate change

### 4.1 Corporate

Vision			
To reduce energy consumption and greenhouse gas emissions from the council's own operations, especially energy sourcing and use, travel and transport, waste, street lighting and the procurement of equipment, buildings and refurbishment; promote sustainable development in the workplace; and ensure council estate is adaptable to changes in the climate.			
Objectives			
<ol style="list-style-type: none"> <li>1. Develop and maintain an effective framework by which to measure, monitor and manage operational carbon emissions from activities that under the council's direct control.</li> <li>2. Initiate energy saving and renewable energy projects and prioritise areas for action based on feasibility and carbon savings.</li> <li>3. Bring together existing and future climate change mitigation projects into a consistently managed and coherent programme and report on progress on an annual basis.</li> <li>4. Raise awareness and encourage staff and member involvement in climate change mitigation activities.</li> <li>5. Raise the environmental profile of the Council locally and nationally and engage partner organisations in carbon management activities.</li> <li>6. Ensure council estate is adaptable to changes in the climate.</li> </ol>			
Actions	Lead	Time	Outcome
Incorporate sustainable design and construction into new buildings and refurbishment programmes	Assistant Director Property	Ongoing	High standards for energy efficiency in all new buildings and refurbishment programmes
Adopt a corporate energy policy and action plan devolved to each site	Sustainability Manager	1	Senior management commitment
Implement Energy Monitoring & Targeting System	Sustainability Manager	1	Improved data collection, analysis and reporting. Estimated 5% saving.
Display energy certificates in all council buildings	Sustainability Manager	1	Provides information and raises awareness. Estimated 5% saving.
Implement energy efficiency measures across corporate estate (inc. insulation, lighting improvements and voltage optimisation)	Facilities Manager and Property Services	Ongoing	Significant decrease in energy consumption
Develop a decentralised energy system for Twickenham campus.	Head of Dev. and Regen.	1-5	A local low carbon energy system which generates electricity at point of use and uses waste heat for heating and cooling.
Procure biodiesel for council fleet sourced locally from used cooking oil	Transport Services Manager	1	A renewable supply of fuel for the council's vehicle fleet
Adopt a Green Travel Plan with ambitious targets for reducing associated CO <sub>2</sub> emissions	Director of Environment	1-3	More staff choosing to travel to work by means other than the private vehicle and reduced emissions from business travel
Integrate energy and wider sustainability considerations into Sustainable Procurement Policy for the purchase of goods and tendering of contracts.	Head of Procurement	1-2	Great impact can be made by building energy considerations into all procurement decisions. Difficult to quantify at this early stage.
Build carbon management and wider sustainability considerations into service plans and relevant job descriptions	Executive Board	1	Enables managers to develop objectives relevant to their own service which support carbon management
Raise staff awareness and facilitate training on climate change and sustainable energy use.	Sustainability Manager	Ongoing	Greater awareness and expertise amongst staff to identify and contribute to energy saving measures.
Communicate council's carbon management activities to community	Head of Comm.	Ongoing	Greater awareness across borough
Undertake climate risk assessment of the council estate	Sustainability Manager	1	Identification of both risks and opportunities – to feed into action plan

## 4.2 Services

Vision			
To reduce the impact on climate change of providing council services to residents, businesses and other customers, ensure those services are resilient to changes in the climate and facilitate community action on mitigation and adaptation.			
Objectives			
<i>To be agreed</i>			
Actions	Lead	Timescale	Outcome
Develop planning policies in the Local Development Framework to encourage sustainable buildings and travel and encourage the use of renewable energy.	Head of Policy and Design	1	To ensure that all developments incorporate high standards of energy efficiency / renewable energy and facilitate low carbon lifestyles. In 2006 sustainable construction checklist was approved as a Supplementary Planning Document.
Preparing guidance for householders on sustainable development.	Head of Policy and Design	1	Increase in the number developments that meet high standards of sustainability
Develop increased capacity to assist planners and developers evaluate the energy impacts of new developments and encourage low carbon buildings	Head of Dev. and Enforcement	1	
Develop a comprehensive Home Energy Database using completed home energy surveys and home energy checks	Sustainability Manager	1	Accessible data that can be analysed and incorporated into the council's geographical information system
Raise awareness and provide energy efficiency advice to households through home visits, events, Internet and by working in partnership with the Energy Saving Trust and local organisations.	Sustainability Manager	Ongoing	More informed residents
Work with retailers, installers, energy utilities, Greater London Authority and others to make available and promote discounted energy efficiency and microgeneration schemes to households.	Sustainability Manager	Ongoing	Increased uptake of micro-generation and energy efficiency measures. A £100 Council tax rebate scheme for cavity wall and loft insulation was launched in 2007.
Reduce fuel poverty through targeting grant funding and ensuring that those eligible are aware of relevant grants.	Energy Efficiency Co-ordinator	Ongoing	Increased uptake of available grants and reduced levels of fuel poverty.
Make services available online (where suitable).	Executive Board	Ongoing	Online provision and use of services reduces paper use, travel to council offices and office support (materials and energy).
Set up and manage an environmental business support service to provide free advice on energy use, water use, travel, waste and supply chain.	Green Business Adviser	1-3	Increased competitiveness of local businesses by increasing energy efficiency and overall environmental management.
Promote sustainable travel through the Local (Transport) Implementation Plan and other local policies.	Assistant Director Traffic & Transport	Ongoing	Reduced levels of travel-related CO <sub>2</sub> emissions. In 2007 CO <sub>2</sub> related parking charges were introduced in CPZ areas and a car club strategy was adopted.
Encourage waste minimisation, recycling and composting.	Head of Street Scene	Ongoing	Reduced tonnage of waste collected and higher proportion of waste collected recycled or composted.
Oppose expansion of Heathrow Airport and minimise the adverse impact of Heathrow Airport on the borough.	Leader of the Council	Ongoing	Stop the proposed developments minimising the adverse local and global impacts of Heathrow Airport.

### 4.3 Schools

Vision			
To support schools in developing sustainability policies and practices in order to provide access for all pupils in the London Borough of Richmond upon Thames to develop the knowledge, skills and motivation to contribute to social and environmental change.			
Objectives			
<ol style="list-style-type: none"> <li>1. Bring together people leading on environmental issues and the implementation of sustainable development in the education sector in the London Borough of Richmond upon Thames.</li> <li>2. Support schools in adopting a whole school and holistic approach to sustainable development through:               <ol style="list-style-type: none"> <li>a. Setting up steering groups and pupil-led action teams</li> <li>b. Developing a local framework to enable schools to assess their current performance and help plan and develop further sustainability policies and practices</li> <li>c. Making available a variety of support measures (alongside the national framework for Sustainable Schools and DCSF resources) for schools to achieve their vision of a sustainable school</li> </ol> </li> </ol>			
Actions <sup>2</sup>	Lead	Timescale	Outcome
Incorporate sustainable design and construction into new buildings and refurbishment programmes	Building Development Manager	Ongoing	High standards for energy efficiency in all new buildings and refurbishment programmes
Support schools to monitor their energy and water consumption through improved data management and use of smart meters	Sustainability Manager	1-2	Data allows for effective monitoring and targeting, benchmarking, production of energy reports and identification of energy saving measures.
Promote energy conservation and investment in energy efficiency measures. Financing through the corporate Climate Change Fund will be made available.	Sustainability Manager	1-5	Energy efficiency measures identified and implemented. All schools meet good practice standards for national energy use benchmarks
Integrate energy and wider sustainability considerations into the Schools' purchasing policies for the purchase of goods and tendering of contracts.	Sustainability Manager	1-5	Great impact can be made by building energy considerations into all procurement decisions. Difficult to quantify at this early stage.
Use whole school approach to energy management with educational activities on sustainable energy.	Sustainability Manager	1-5	Involvement of all school stakeholders in energy management (including pupils) and clear links to curriculum.
Work with all schools to develop an approved travel plan by 2009	Transport Planning Services	Ongoing	Increase in the number of pupils walking, cycling or taking public transport to school
Support schools to achieve the Sustainable Learning accreditation <sup>3</sup>	Sustainability Manager	1-3	Schools adopt a structured approach to utility management, which can help identify and realise carbon savings.

<sup>2</sup> The vision and objectives refer to the Schools Environment Forum Executive as whole whilst the actions listed are relevant only to the energy, purchasing and travel doorways.

<sup>3</sup> Sustainable Learning is a structured approach to managing energy and water use in schools and is a joint initiative between DCSF, BRE and CREATE. There are three levels of accreditation which are compatible with Eco-Schools.

## 4.4 Community

### Vision

Tackle climate change, and other environmental issues, in an integrated approach with partners in the local business, housing, transport, public, voluntary and community sectors by reducing the borough's contribution to climate change, ensuring it is able to adapt to changes in the climate and improving the local environment.

### Objectives

1. Deliver the targets and priorities of the Richmond Community Plan (2007-2017) and Local Area Agreement on climate change and other environmental issues and to report on progress on the above at agreed specified intervals to the RLSP.
2. To use the information from the above to develop and set future policy priorities.
3. Provide a forum for businesses, public service providers and community organisations to discuss the challenges of sustainable development, exchange views, share experiences and set up joint working initiatives.
4. Measure the borough's carbon footprint and develop and adopt strategies for reducing its size.
5. Undertake a climate risk assessment of the borough and develop and adopt strategies for adapting to the impacts of a changing climate.
6. Communicate and raise awareness and encourage community and business led action on mitigating and adapting to climate change, water efficiency, waste minimisation and recycling and travel impact reduction.
7. Maintain and, where possible, enhance species and habitats of importance and ensure they are able to adapt to changes in the climate.
8. Develop and put into action, in consultation with the community, a workplan which identifies areas for action, a timetable for delivery and sets out roles and responsibilities.

### Actions<sup>4</sup>

#### Lead

#### Timescale

#### Outcome

*To be agreed by Greener Richmond.*

---

<sup>4</sup> The Richmond Local Strategic Partnership adopted the vision and objectives of Greener Richmond on 9 November 2007. The first meeting of the new partnership will take place on 21 February 2008 and a workplan will be developed in due course which will bring together partner activities and joint activities.

## 5. Monitoring and Delivery

A core aspect of this strategy is the need for accurate data on energy consumption and CO<sub>2</sub> emissions. Robust baseline data underpins the setting of realistic and challenging objectives as well as specific targets and is necessary for monitoring the effectiveness of carbon reduction measures. The targets and indicators shown below are provisional and will be developed further when more complete data sets become available.

Indicator		Baseline	Activity to measure	Targets
CO <sub>2</sub> reduction from Local Authority operations (NI185)		To be determined (2008/2009)	Overall carbon footprint from corporate estate: buildings, street lighting, fleet/business and staff transport.	-5.5% p.a.
Per capita CO <sub>2</sub> emissions in the Local Authority area (NI186)		6.5tCO <sub>2</sub> per capita (2005)	Includes CO <sub>2</sub> emissions from households, transport and industry and commerce.	To be determined
Tackling fuel poverty – people receiving income based benefits living in homes with a low energy efficiency rating (NI187)		To be determined	Improved energy efficiency of households inhabited by people claiming a defined set of income based benefits.	To be determined
Adapting to climate change (NI188)		To be determined	Progress based on a five-step climate risk assessment process.	To be determined
Renewable / low carbon energy capacity installed		To be determined	Total capacity (MW) of renewable and low carbon energy generating technology installed in Richmond.	To be determined
Schools	Energy consumption (kWh/m <sup>2</sup> ) per school	To be determined	Total energy consumption (electricity, gas and heating oil)	To be determined
	Water consumption (m <sup>3</sup> /pupil/annum) per school	To be determined	Total water consumption.	To be determined

## 7. Abbreviations and further information

### Abbreviations

Acronym	
CCSPB	Climate Change Strategy Programme Board
CMSG	Carbon Management Steering Group
CPZ	Controlled Parking Zone
DCSF	Department for Children, Schools and Families
NI	National Indicator
SEF	Schools Environment Forum
SIP	(Corporate Carbon Management) Strategy & Implementation Plan
REN	Richmond Environment Network
RLSP	Richmond Local Strategic Partnership

### Further information

For further information please visit [www.richmond.gov.uk/sustainability](http://www.richmond.gov.uk/sustainability) or contact the Council's Sustainability Unit by emailing [sustainability@richmond.gov.uk](mailto:sustainability@richmond.gov.uk) or phoning 020 8891 7302.