

## Appendix 7

### KNOWING YOUR BOROUGH: DEMOGRAPHICS

#### Introduction

- This section contains statistics and charts showing the representation of the different equality groups as identified in the 2001 Census. This is the most detailed information that is currently available, although it is by now five years after the Census was conducted. We have added data, which shows the different impairments of service users as gathered by particular service departments. The two main parts of the section looks at ethnicity and disability. Gender information is also included.

#### Use of Information and data

- The figures in this section recognise the growing and rich diversity of Richmond's communities. Demographic data analysis will inform the policy, planning and review processes of the Council. This and other data is integral to the EINA and equality action planning processes and evaluation of outcomes.

#### GENDER

- Richmond Upon Thames has a total population of some 172,335 people of whom 52% are women and 48% are men. Amongst people from black and minority ethnic backgrounds, the figures are 48.4% (men) and 51.6% (women)
- Overall 56% of disabled people living in households in the borough are women compared to 44% men.
- According to the 2004 Annual Population Survey, 68.8% of women in the borough were economically active compared to 80.9% for men. Overall 66.1% percent of women of working age were employed compared with 75.8% for men."

**Provision of unpaid care:**

7.5 % of the women in the borough provide some unpaid care compared to 5.9% of men. 1.4% of women provide more than 50 hours of unpaid care per week, compared to 0.8% of men.

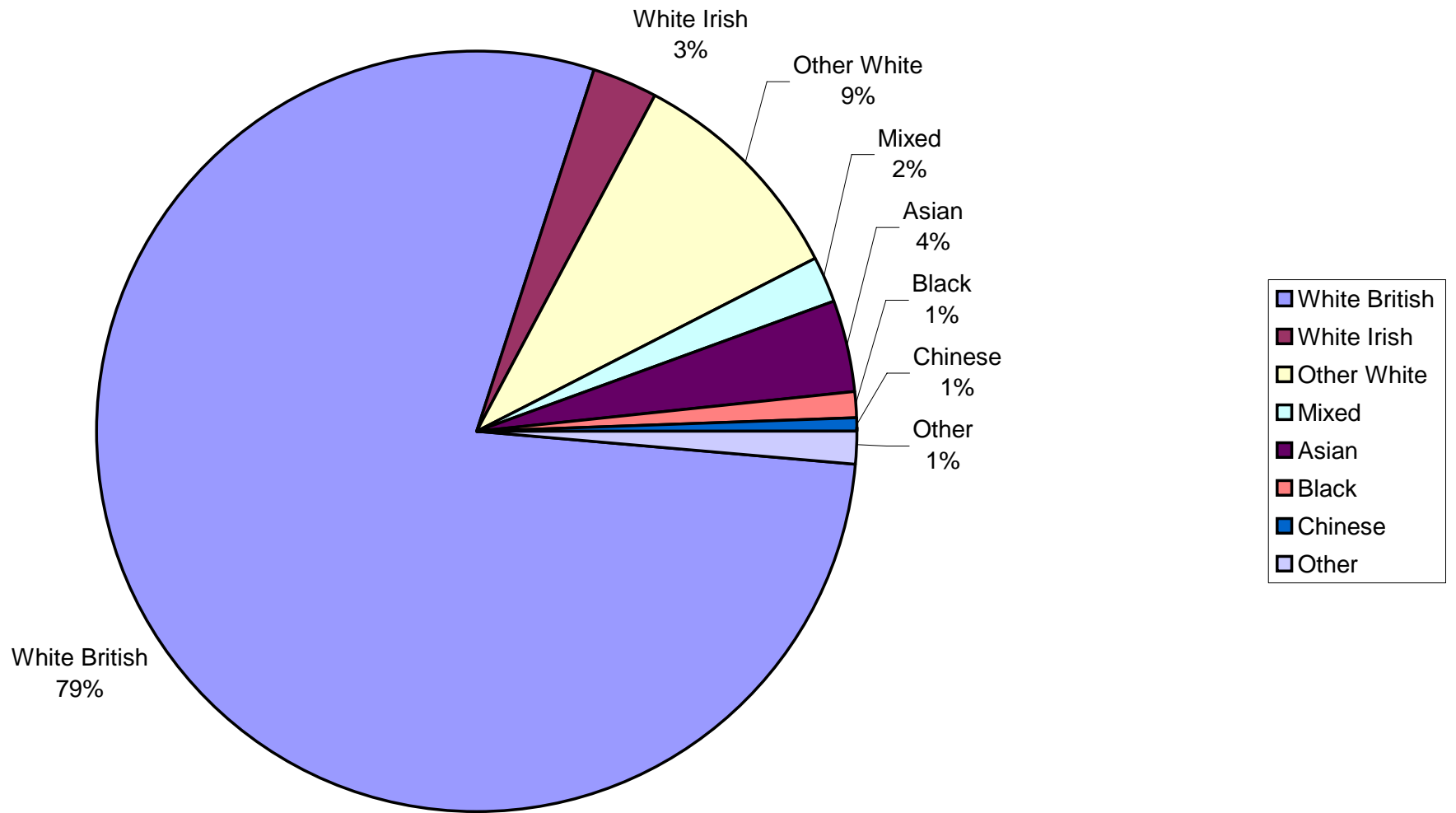
**Female headed households**

Women head 40.6% of the borough's 76, 146 households.

**Industry group/Economic Activity**

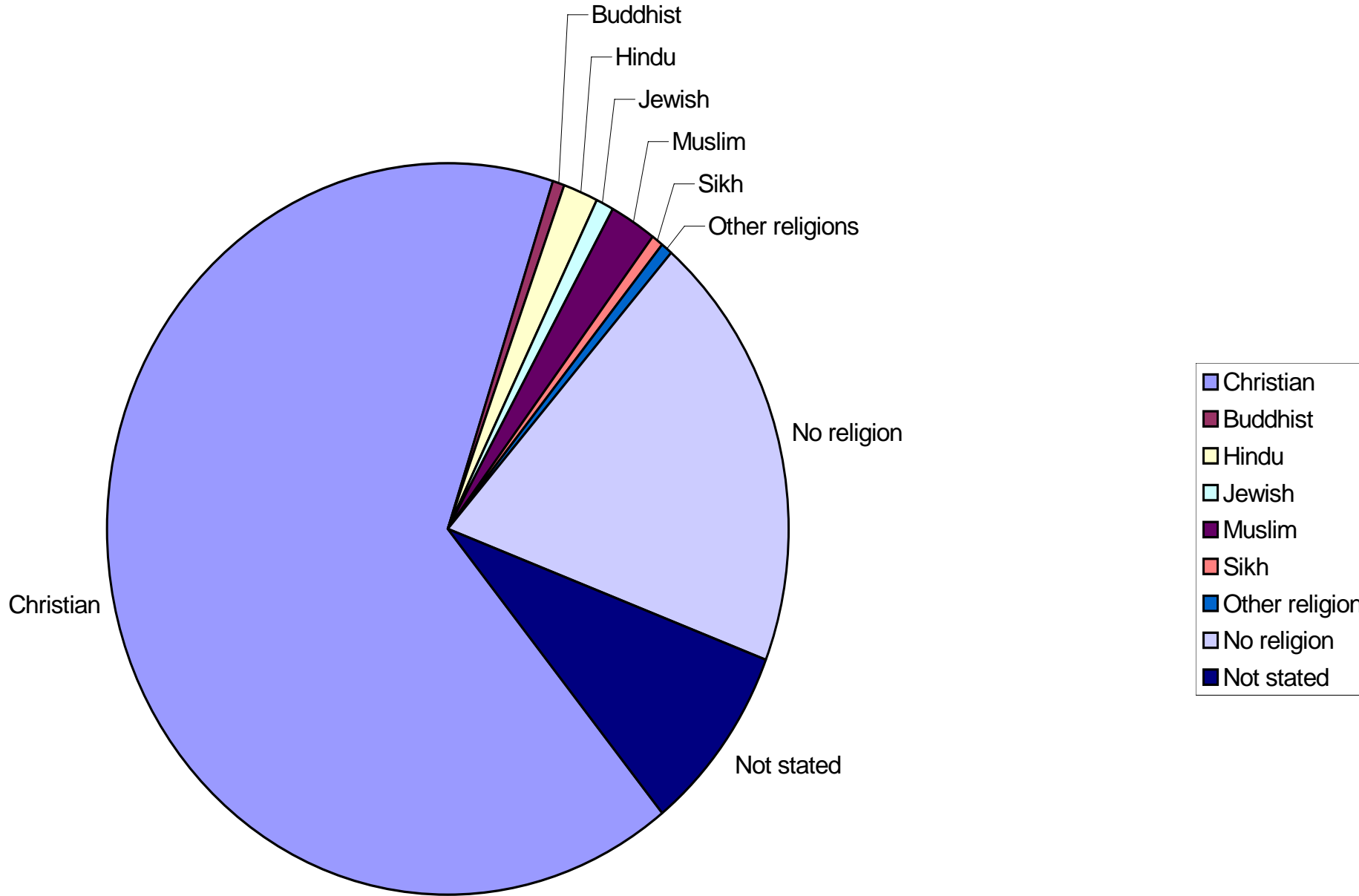
- Almost a quarter of women(24.4) who are employed are in Real estate, renting and business which is the single largest area of economic activity. This is followed by education, and health and social work with 13.4% and 12.8%. For men, the largest area of economic activity is also Real estate, renting and business (29.9 %), but followed by wholesale retail and motor vehicles (11.8%) and Transport (9.3%).

Chart 1-Distribution of Ethnic Groups



- The current percentage of black and minority ethnic groups in the borough is **9%**, of whom the largest are people from Asian backgrounds (4%) and mixed backgrounds (2%). The 9% figure does not include those from Irish backgrounds who form **3%** of the total borough population. The total figure for those from minority ethnic backgrounds, including those from Irish backgrounds is **12%**.
- **79%** of Richmond's population identified themselves as White British and **9%** as being from Other White backgrounds. Other White includes those from White European backgrounds, White Americans, Australians, South Africans and those from New Zealand.
- The figures for country of birth show that **13.3%** of Richmond's population were born outside the United Kingdom. The 2001 census figures by country of birth show large proportions of those born outside the United Kingdom include Americans, Australian, South African and those born in New Zealand.
- The local Traveller community is made up mainly of Irish Travellers living on the Traveller site in Hampton. However, there are still a number of English Traveller families who are housed in the borough. Ten years ago the community were mainly English Travellers. Data relating to the Traveller community is obtained from services such as Education and Richmond Housing Partnership.
- The figures for religion show that 65.8% of Richmond's population identify themselves as Christian, 2.3% as Muslim, 0.9% as Jewish, 0.7% as Sikh, 0.7% as Buddhist and 0.3% as Hindu.

Chart 2-Religions



## Language and ethnicity in schools

- A language survey undertaken in the borough's schools in 2006/7 identified **130** languages, other than English, spoken by children in Richmond's schools.
- In 2005/06 the top 5 languages requested for translation and interpreting included: Gujarati, French, Farsi, Kurdish, Bengali respectively. In 2004/5, they were: Farsi, French, Portuguese, Punjabi and Gujarati. In 2003/04 the top 7 were: Portuguese, Farsi, Punjabi, Arabic, Russian, French and Polish. And in 2002/03 the top 9 was: Albanian, Russian, Farsi, Somali, Kurdish, Gujarati, Hindi, Punjabi and Urdu.
- The Department for Education and Skills has issued guidance that BME should include all ethnic groups other than White British. These include White: Irish/Traveller/Any other white background/Gypsy/Roma. As such, as at January 2006:
- The percentage of primary school children from black and minority ethnic backgrounds in Richmond schools was **29.7%** and the percentage of secondary school children in Richmond schools was **28.1%** using the new DFES definition.
- Under the previous definition, which included all those classified in the census other than White, the percentage of children from Black and Minority Ethnic background in Richmond's primary schools is **17.5%** and the percentage in secondary schools is **21.1%**.
- Other White background in the census includes White European, including people from Eastern European backgrounds, and White American, Australian, New Zealand, and White African. The 2001 census figures by country of birth show large proportions of those born outside the UK, include Americans, Australian, South African and those born in New Zealand.
- **22.1%** % of the 0-16 population are from black and minority ethnic backgrounds.
- Young people from black and minority ethnic backgrounds form **50%** of the borough's college population.
- The table below provides a breakdown for all ages by age and ethnicity. It is interesting to note that **5%** of the 60-74 population are from black and minority ethnic backgrounds.

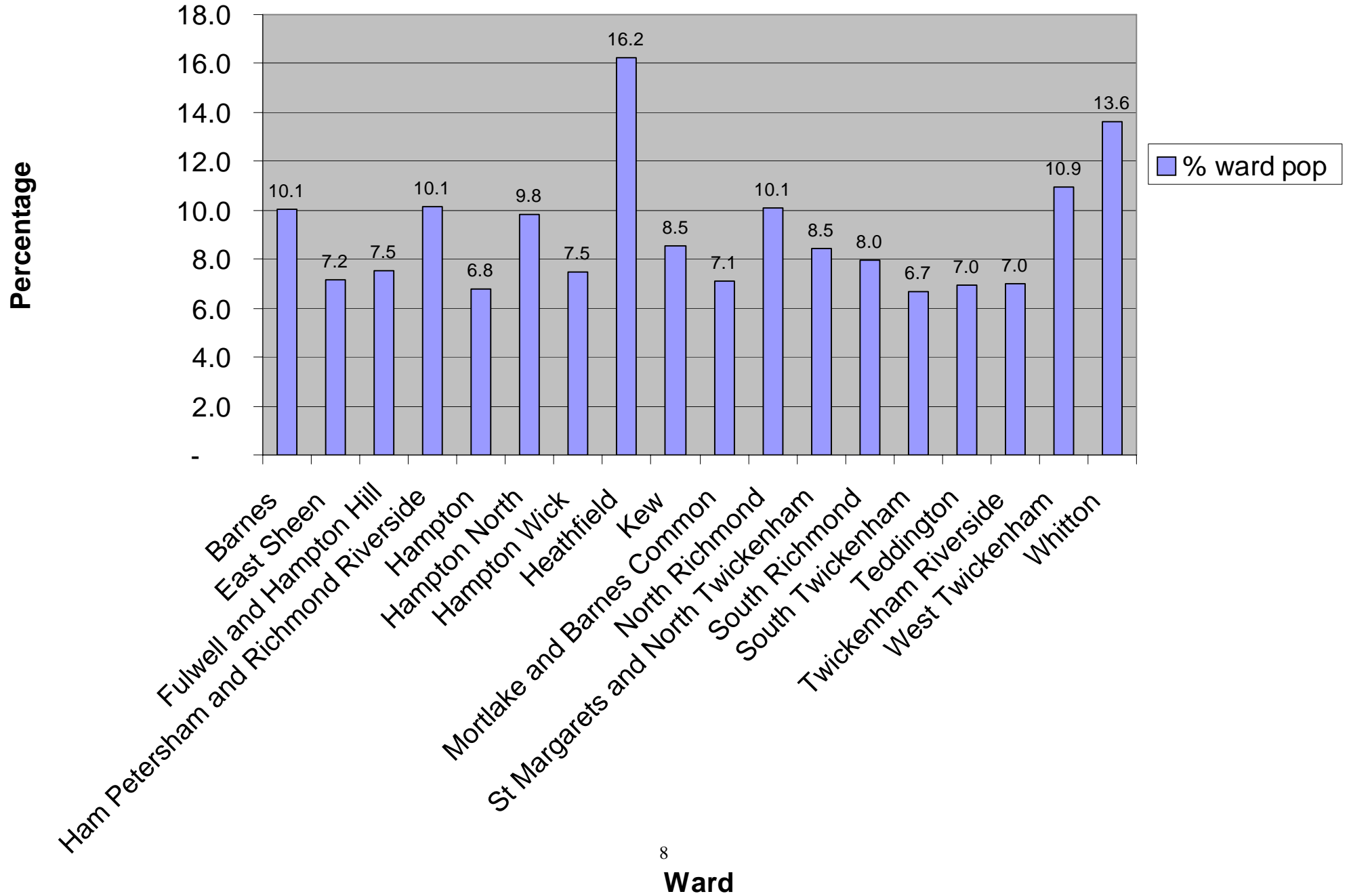
AGE	Total	White -	ME -	ME as % of Total
<b>0 to 15</b>	<b>32,425</b>	<b>28,188</b>	<b>4,237</b>	<b>13.1</b>
<b>16 to 24</b>	<b>15,848</b>	<b>13,784</b>	<b>2,064</b>	<b>13.0</b>
<b>25 to 49</b>	<b>72,018</b>	<b>65,109</b>	<b>6,909</b>	<b>9.6</b>
<b>50 to 59</b>	<b>21,690</b>	<b>20,406</b>	<b>1,284</b>	<b>5.9</b>
<b>60 to 64</b>	<b>6,764</b>	<b>6,374</b>	<b>390</b>	<b>5.8</b>
<b>65 to 74</b>	<b>11,295</b>	<b>10,774</b>	<b>521</b>	<b>4.6</b>
<b>75 and over</b>	<b>12,395</b>	<b>12,150</b>	<b>245</b>	<b>2.0</b>
<b>60-74</b>	<b>18,059</b>		<b>911</b>	<b>5.0</b>

### 2001 Census

### Profile of BME residents

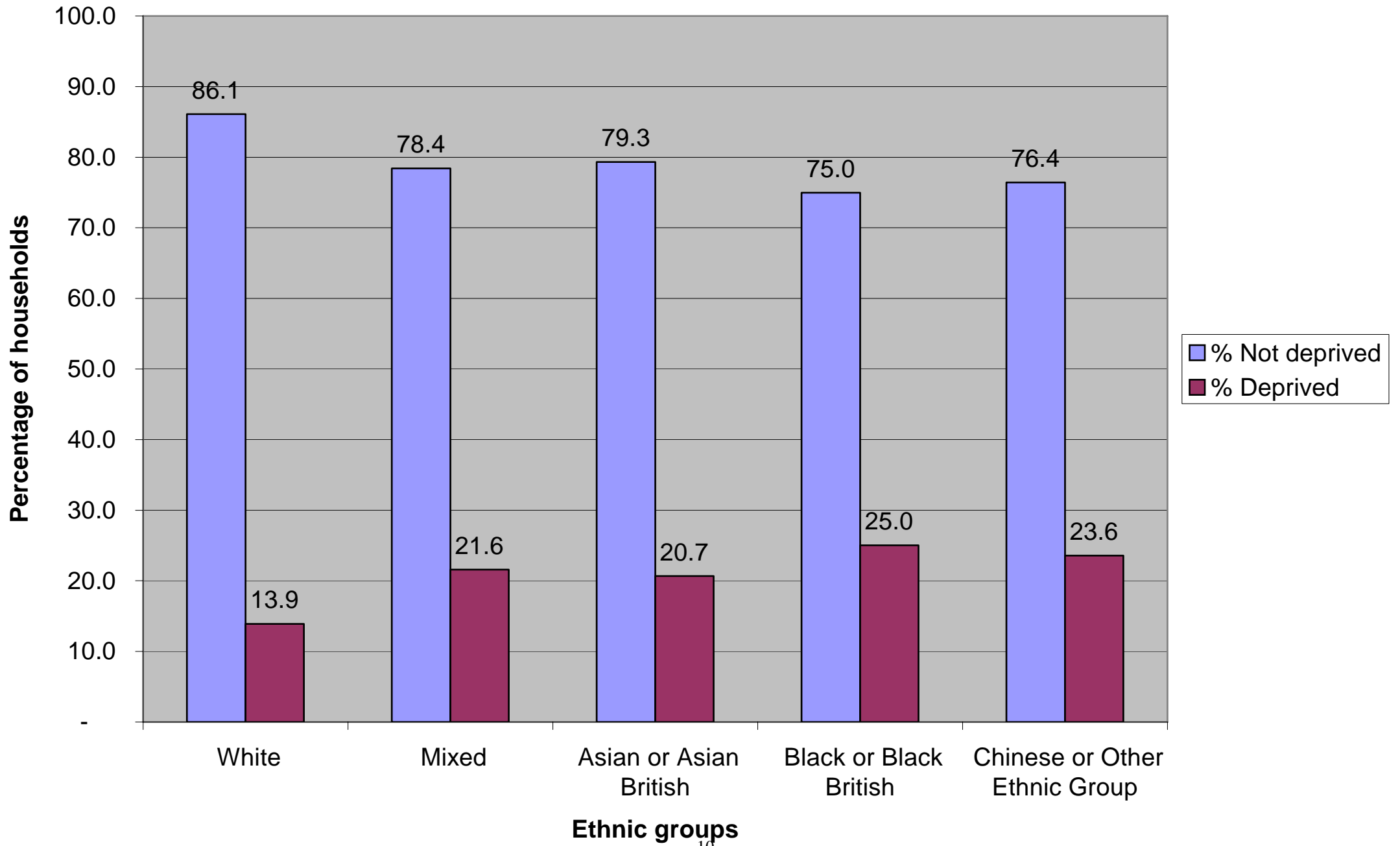
- The 2001 census also showed higher numbers of people from black and minority ethnic backgrounds in the borough who are unemployed (2.9%) in comparison to people from White backgrounds (1.8%).
- It also showed that unemployment among men at 3.1% was higher than that among women, 2.1%.
- Heathfield ward has the highest percentage (16.2%) of people from black and minority ethnic backgrounds in the borough, followed by Whitton (13.6 %); West Twickenham (10.9 %); Barnes, Ham Petersham and North Richmond all at 10.1%.

Chart 3 BME pop by ward, 2001



- The 2001 Census showed that higher percentages of people from black and minority ethnic backgrounds classified as deprived in housing dimension see chart below, in comparison to people from White backgrounds (13.9%) However, those from Irish backgrounds (15.9 %) showed higher percentages in this category in comparison to those from White British backgrounds.
- The 2001 Census data also showed that higher proportions of residents from some black and minority ethnic backgrounds are likely to live in socially rented property than those from White backgrounds. While 10.8% of those from White British backgrounds live in socially rented property, 54% of those from Bangladeshi backgrounds and 30% of those from Other Minority Ethnic backgrounds live in socially rented property.

**Chart 4 Housing Deprivation by Ethnicity, 2001**



The 2001 Census showed that **93.1%** of disabled people in the borough are White and **6.9%** from black and minority ethnic backgrounds. However, amongst the permanently sick and disabled population, **1.8%** of people from White backgrounds are classified as permanently sick and disabled, while **2.0%** of people from Black and Minority Ethnic backgrounds are classified as permanently sick

## Profile of Disabled People

According to the 2001 Census:

- Disabled people<sup>1</sup> make up 12.4 % of the borough's population of 172 335, or 21 346. They are spread fairly evenly across the wards. Just over 5 % (1 097) of disabled people live in communal or care homes.
- The borough has the lowest proportion of disabled people among London boroughs, with the highest being Barking and Dagenham with 19.9%, and an average of 15.5% for London boroughs.
- The borough has the fifth smallest percentage of disabled people in England and Wales. The Department for Work and Pensions estimates that there are now roughly 10 million disabled people in the United Kingdom, up from the previous estimate of 8.7 million<sup>2</sup>.
  - Disability is strongly correlated with age in the borough where almost three quarters of disabled people are over the age of 50 (71.1%)
  - 93.1% of disabled people in the borough are White and 6.9% from Black and minority ethnic backgrounds. This is a slightly higher proportion compared to the overall distribution of the ethnic groups in the general population of the borough, where 91% of the population is White and 9% is from a Black and minority ethnic background.
  - Just over 6 000 disabled people of working age (18-64) in the borough are economically active, that is, either employed or seeking employment. . This represents 5.6% of the economically active population in the borough.
  - Compared with disabled people of working age, this is an economic activity rate of 69 %.

---

<sup>1</sup> We have taken the 2001 Census definition of people with a limiting long-term illness (LLI) to be disabled people. This is a practice that the Audit Commission in recent guidance has identified as acceptable.

<sup>2</sup> User's guide to disability estimates and definitions, Department for Work and Pensions, March 2004.

- Non-disabled people in the borough have an economic activity rate of 78%, somewhat lower than the estimated London average of 80.6%.
- There are no recent figures on employment of disabled people in the borough, the 2004 Annual Population Survey found that the average unemployment rate of disabled Londoners was 12.2% almost twice the rate of the non-disabled (6.7%).
- Using that same ratio, it is possible that unemployment among disabled people in the borough may be as high as 10%, that is twice the estimated 5% unemployment rate for the borough as a whole<sup>3</sup>
- Disabled people make up 12 % of the economically inactive population, that is, people of working age but who are not in the labour market, in the borough. People looking after home and family make up the largest single grouping (37%), followed by students (27%) and those who are retired (10%)
- Disabled people in the borough are more likely to be using social housing<sup>4</sup> than non-disabled people. This is consistent with the London-wide experience.
- Disabled people in the borough are almost three times as likely to live in households without a car or van than non-disabled people (37.7% v 13.1%).

### **Service related information**

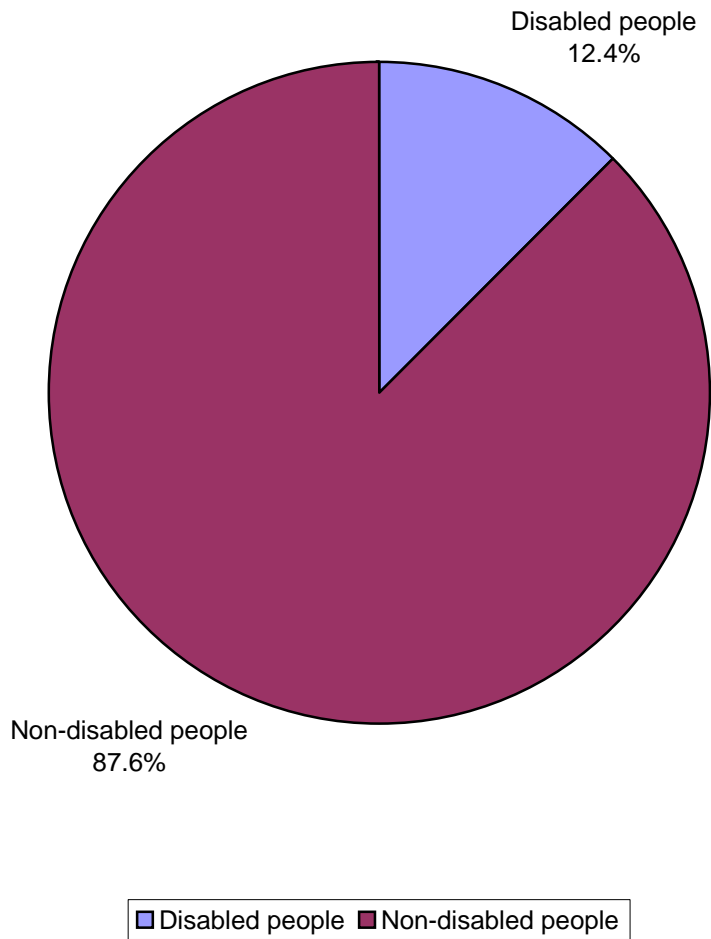
- The Council maintains a voluntary register which shows almost 1,100 visually impaired residents (563 blind, and 529 partially sighted)
- The register has 135 Deaf people and 475 hard of hearing people
- There are 20 residents who with both hearing and visual impairment
- The Council has 196 disabled children on its disabled children register.

---

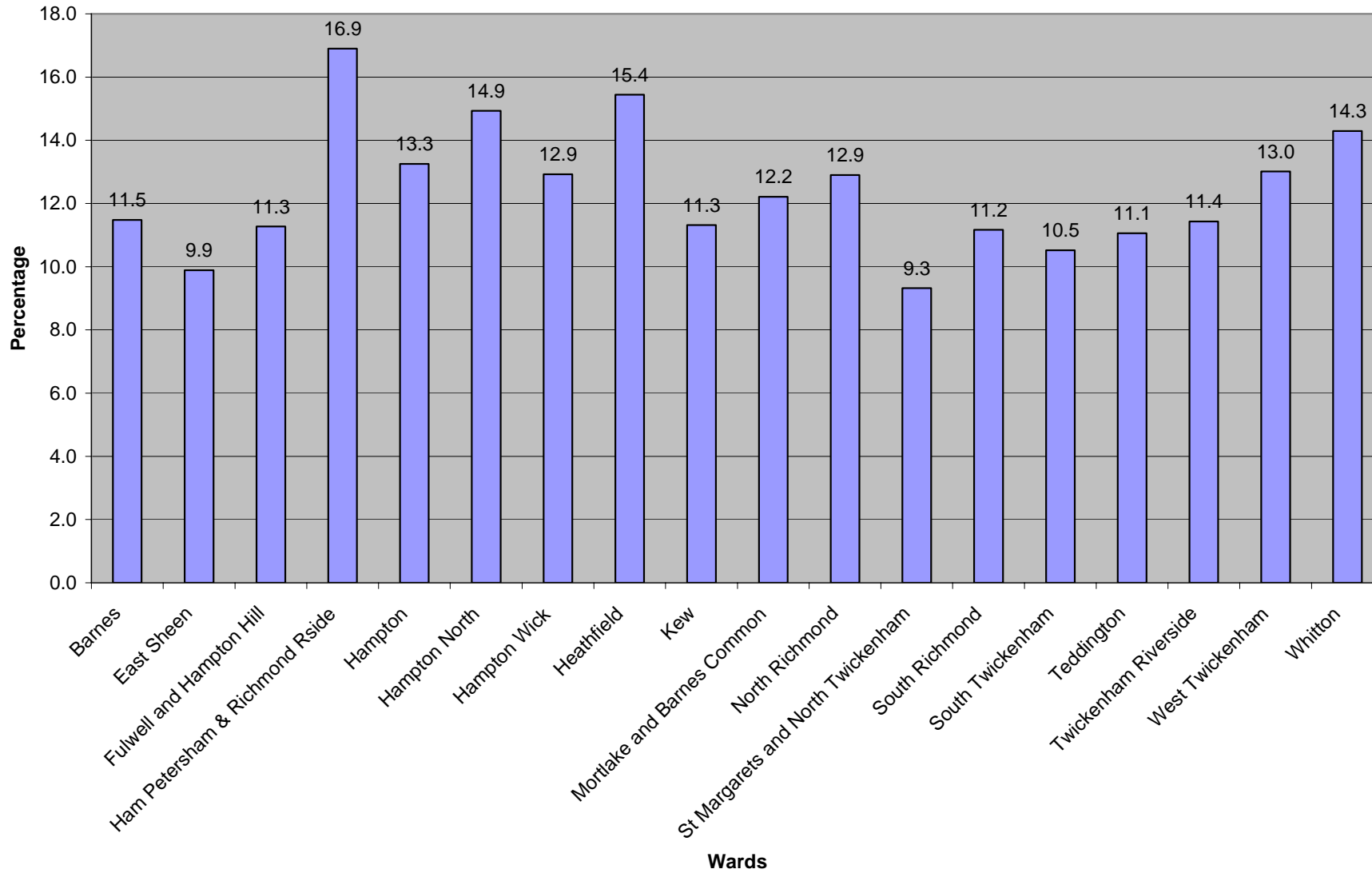
<sup>3</sup> Annual Population Survey, GLA, DMAG Briefing 2005/34, Table A14, p 27

<sup>4</sup> Please note that the Council transferred its housing stock in July 2000 and no longer has tenants.

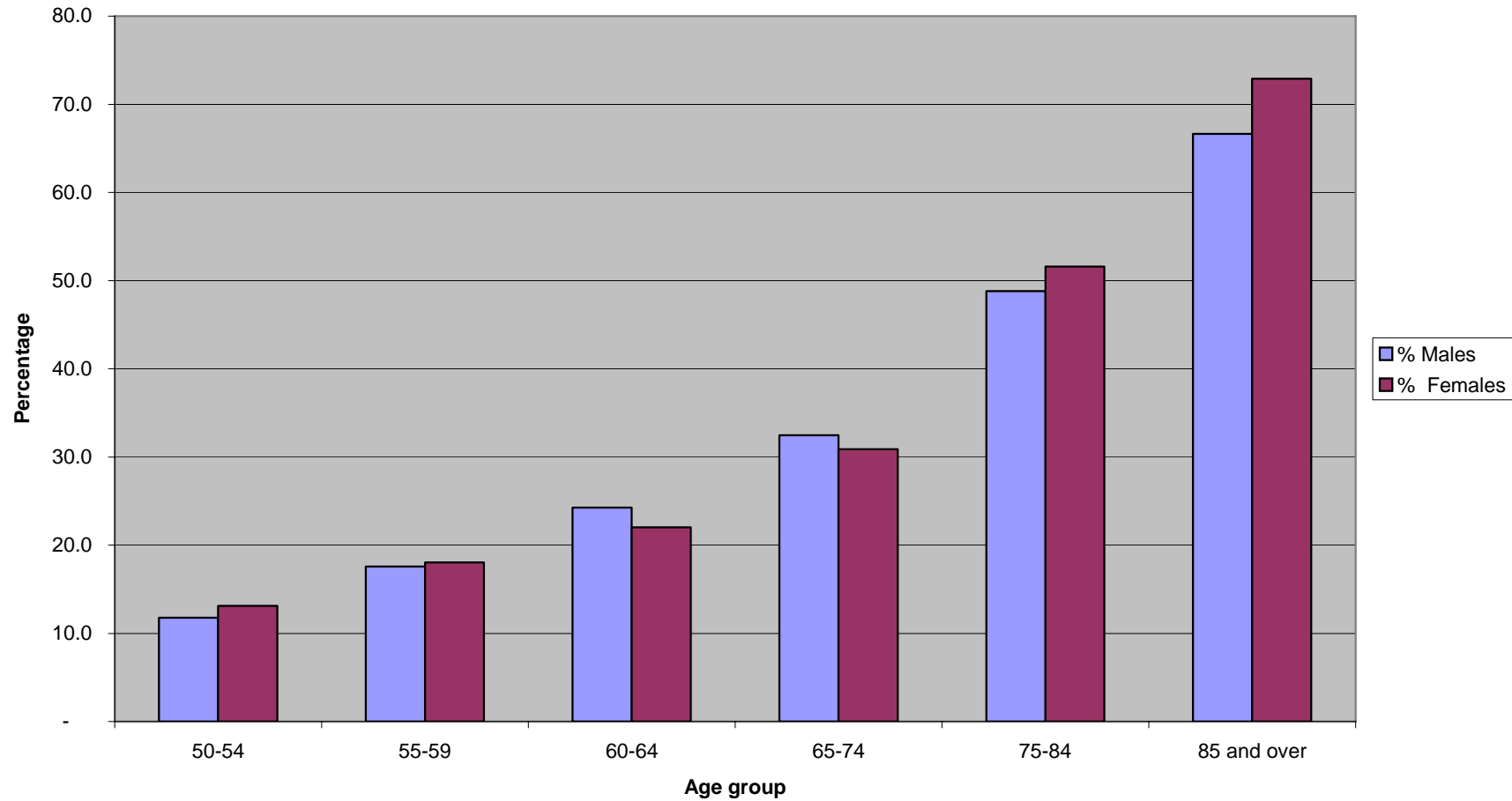
**Chart 5: Proportion of Disabled People in LBRUT**



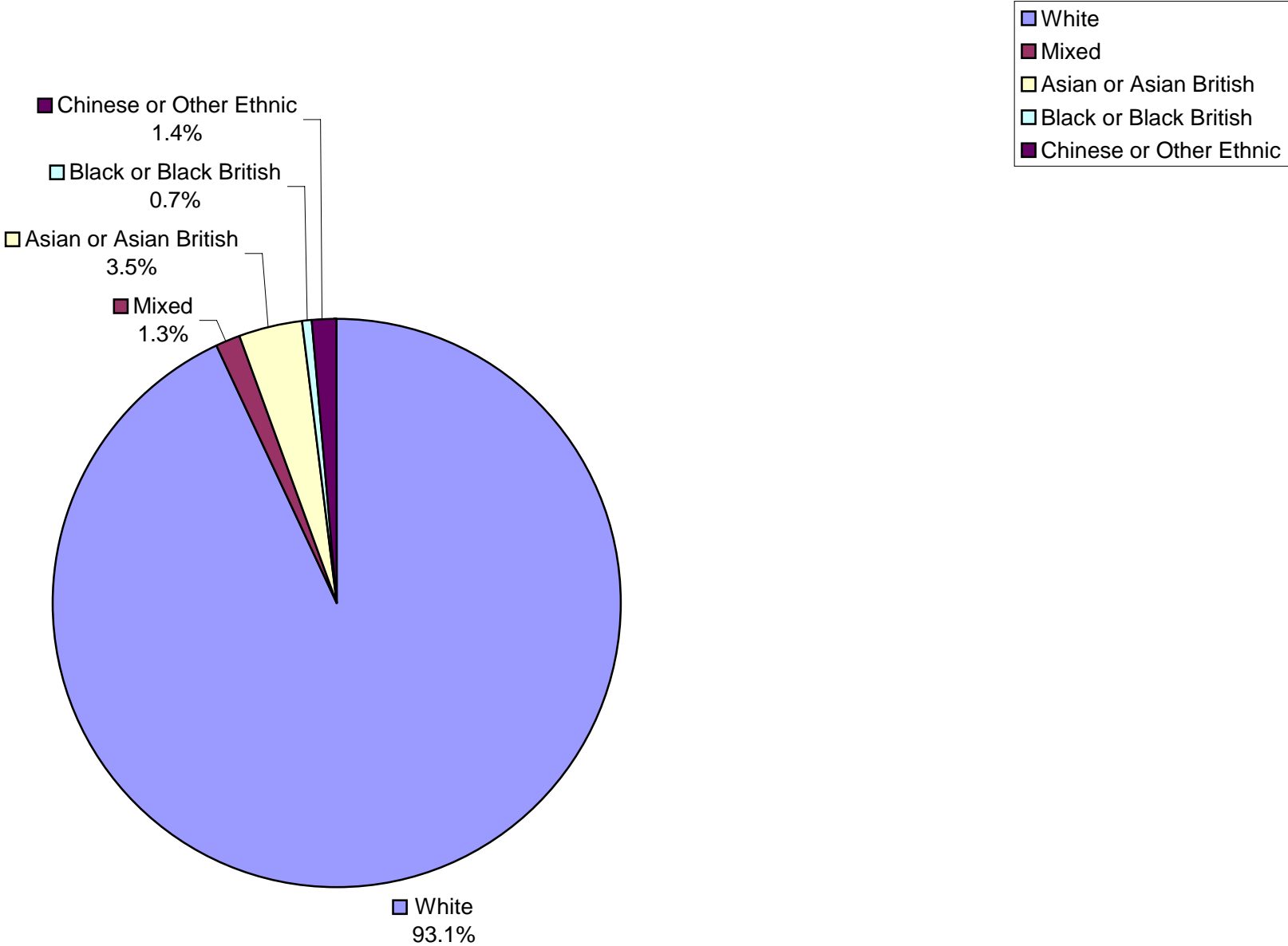
**Chart 6 : LBRUT-Ward Distribution of Disabled People**



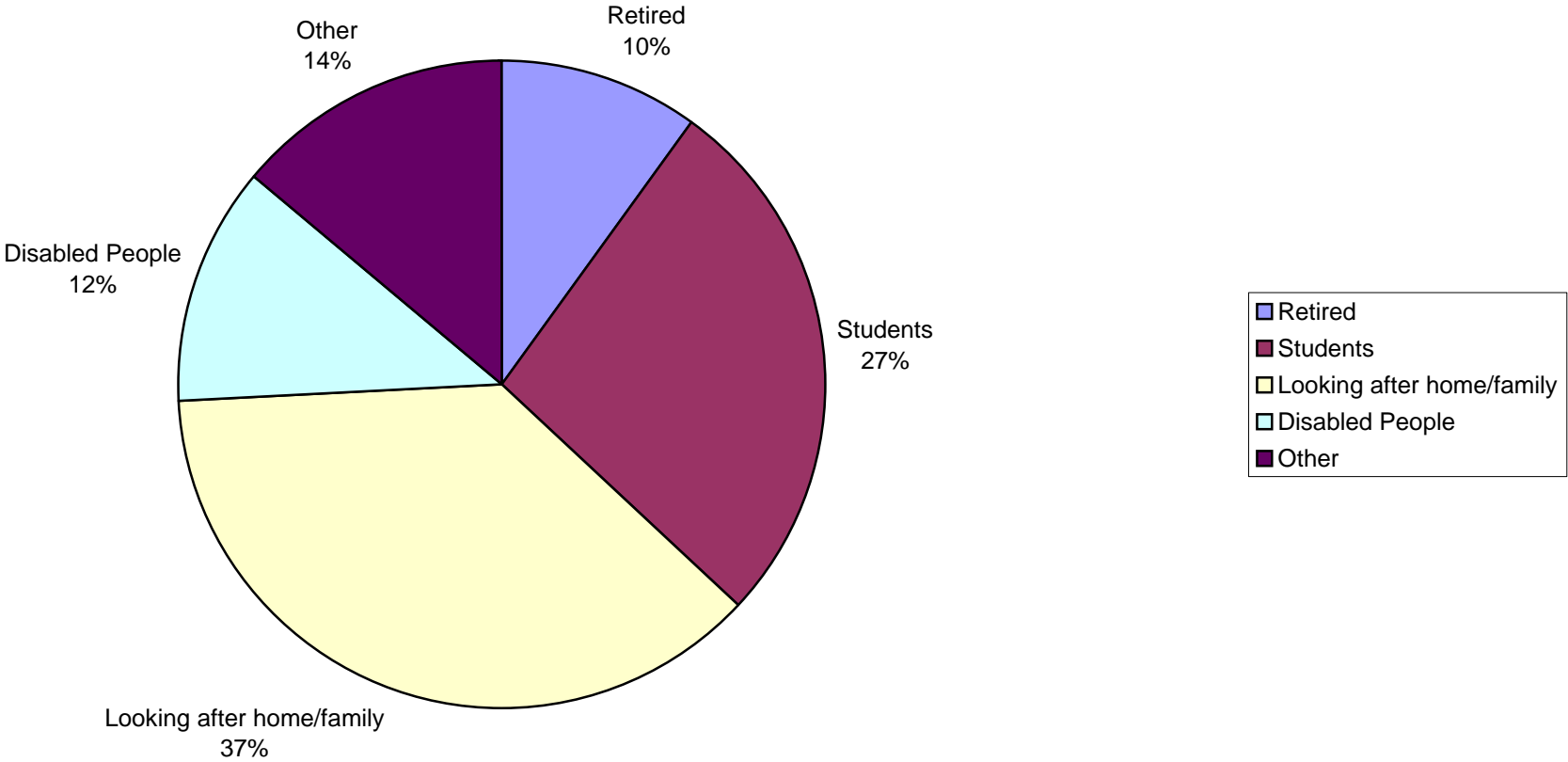
**Chart 7: LBRUT-Disabled people by age and gender**



**Chart 8: Ethnic background and Disability in LBRUT**



**Chart 9: LBRUT-Economic Inactivity by Population Groups**



**Chart 10: LBRUT-Ownership of homes and vehicles by disabled people**

