

Appendix two Section One

Appendix 6 outlines key Council policies and plans. It also contains sections with organisational charts to explain the Council's services, functions, decision making processes, equality structures and partnerships.

<h3>Council Policies</h3>

The Council's key policies and plans are:

- Community Plan
- Local Area Agreement (2007)
- Corporate Plan (from 2007)
- Best Value Performance Plan
- Consultation Strategy (2007)
- Community Engagement Strategy (2007)
- Community Safety Strategy
- Anti Social Behaviour Strategy
- Domestic Violence Strategy
- Drug and Alcohol Action Team Action Plan
- Equality/Diversity Policy
- Equalities Scheme (including Disability Equality action plan, Race Equality action plan, Gender Equality action plan and Overall Corporate Equality Action Plan)
- Racial Harassment Strategy
- Grants Strategy
- Property Strategy and voluntary/community groups
- Corporate Asset Management Plan

- Human Resources Strategy
- Organisational Development Strategy
- Workforce Development Plan
- Pensions Policies
- E-Government Strategy (including IT Strategy)
- Capital Strategy
- Anti Fraud and Corruption Strategy
- Local Agenda 21 Strategy
- Local Implementation Plan (Transport)
- Local Development Framework
- Unitary Development Plan (will be replaced by above in the future)
- Procurement Strategy
- Waste Management Strategy
- Parking Policies
- Licensing Policy
- Green Space Strategy
- Accommodation Strategy
- Adult Lifelong Learning Development Plan
- Annual Library Plan
- Cultural strategy
- Sports Strategy
- Parks Strategy
- Children and Young People's Plan
- Early Years Development Plan
- Education Development Plan

- Accessibility Plan (Education)
- Youth Justice Plan
- Youth Strategy
- Connexions Strategy
- Teenage Pregnancy Strategy
- Carers Strategy
- Joint Commissioning Boards' Strategies and Plans (learning disabilities, older people, mental health, long term conditions and disability)
- Community Care Plan (Health and Social Care Plan)
- Valuing People Strategy
- Protection of Vulnerable Adults Strategy
- Health and Safety Policy
- Food Safety Service Plan
- Supporting People Strategy
- Housing Strategy
- Homelessness Strategy
- Allocations Policy
- BME Housing Strategy

Appendix 6 Section 2

List of Council Functions and Services

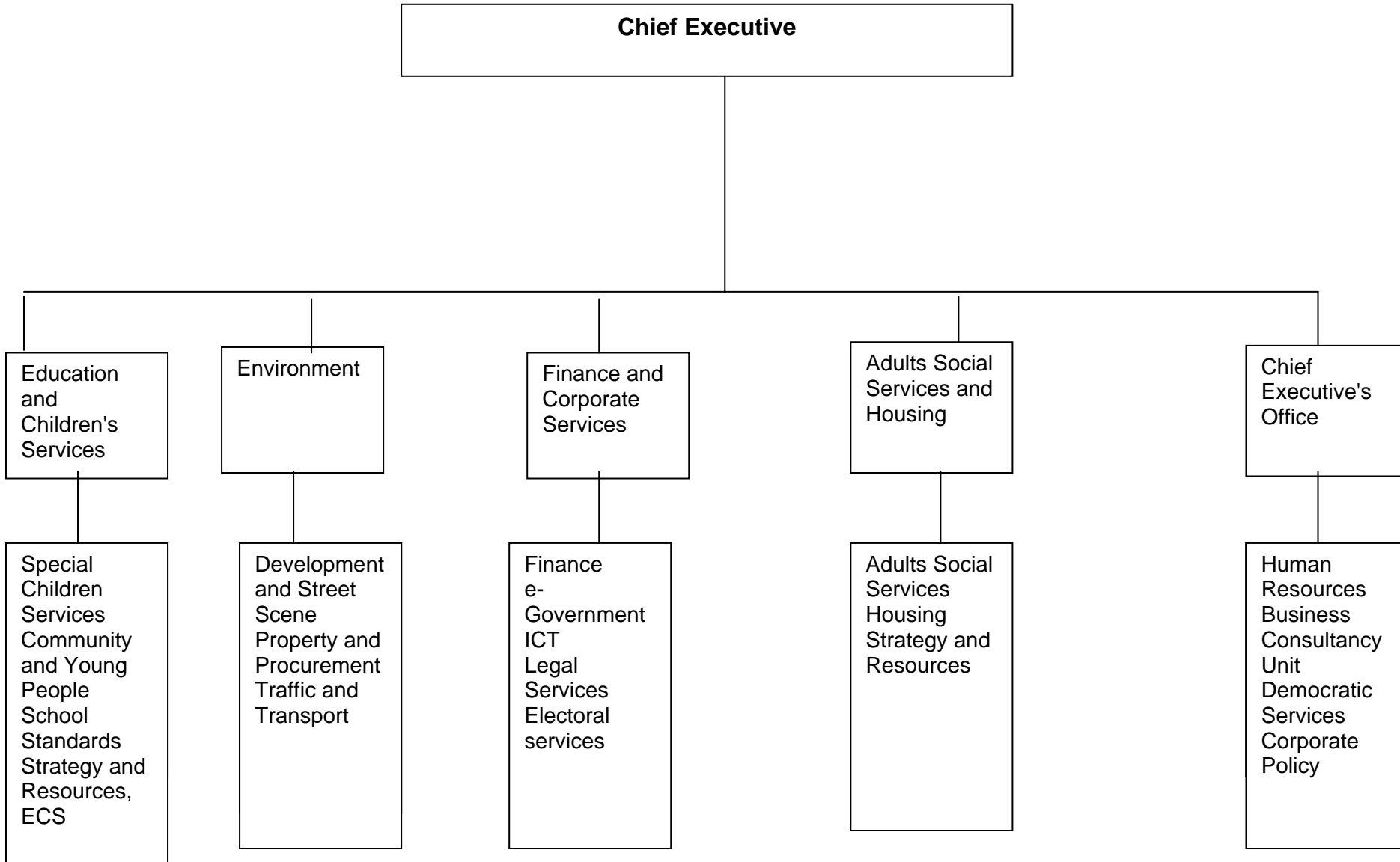
Chief Executive's Office	Education and Children Services	Environment	Finance	Adult Social Services and Housing
Business Consultancy Best Value and Service Reviews Project Management Performance Management Service Planning Consultation	Schools Standards Inc. pupil and student support services	Development and Street Scene Abandoned Vehicles, Births, Deaths, Marriages , Cemeteries , Conservation , Consumer Protection Contact Centre, Customer Services, Development Control, Graffiti, Information Systems, Planning and Policy, Public Conveniences ,Recycling , Registrars Office, Service Development, Street Cleaning, Street Scene , Enforcement, Street Scene, Urban Design, Waste Services	E-Government Developing E-government strategy	Adult Services Older people. Learning difficulties/disabilities, Carers, Residential homes, Day services, Mental health services, Occupational therapy

<p>Corporate Policy Communications and Media, Partnerships, Equalities and Diversity, Organisational Development, Community Safety</p>	<p>Specialist Children services Families in need, looked after children, disabled children, mental health services, family support centres, foster care, adoption services, youth offending Childcare information service – playgroups, day nurseries and childminders</p>	<p>Property and Procurement Construction Services, Estate Management, Facilities Management, , Health & Safety (Corporate), Parks and Open Spaces, Procurement, Council Land and Property for Sale or for Letting,</p>	<p>Finance Revenues and Benefits, Audit, Home loans</p>	
<p>Democratic Services Councillors, Constitution, Mayor's Office, Cabinet and Committees</p>	<p>Community and Young people Recreation facilities, sports centres, swimming pools, sports development Youth Centres and youth projects Lending, research and information service, Galleries, Arts events</p>	<p>Traffic and Transport Accessible Transport, Area Champions, Business Continuity, Careline/CCTV Clean and Green Initiatives, Emergency Planning, Highway Asset Management, Highway and Transport Support, Highway Maintenance, Nuisance vehicles , Parking Solutions ,Public Transport Safety, Structural Engineering Service Street Lighting,</p>	<p>Information Technology Communications technology and Website</p>	<p>Housing Needs Allocating housing and housing register, homelessness, temporary accommodation asylum & resettlement</p> <p>Housing Residential Services housing advice, grants, supported housing, residential environmental health health & safety to local businesses and the community</p>

<p>Human Resources Personnel management service: Business Support Employee Relations Operations (HR Advice) Operations (Recruitment) HR Specialist Services (includes HR equalities and diversity)</p>		<p>Transport Planning, (Development Control) Transport Policy Transport Services</p>	<p>Legal Services Electoral registration and management of elections</p>	<p>Strategy and Resources Service information, quality assurance, Social Services workforce development</p>
--	--	---	--	---

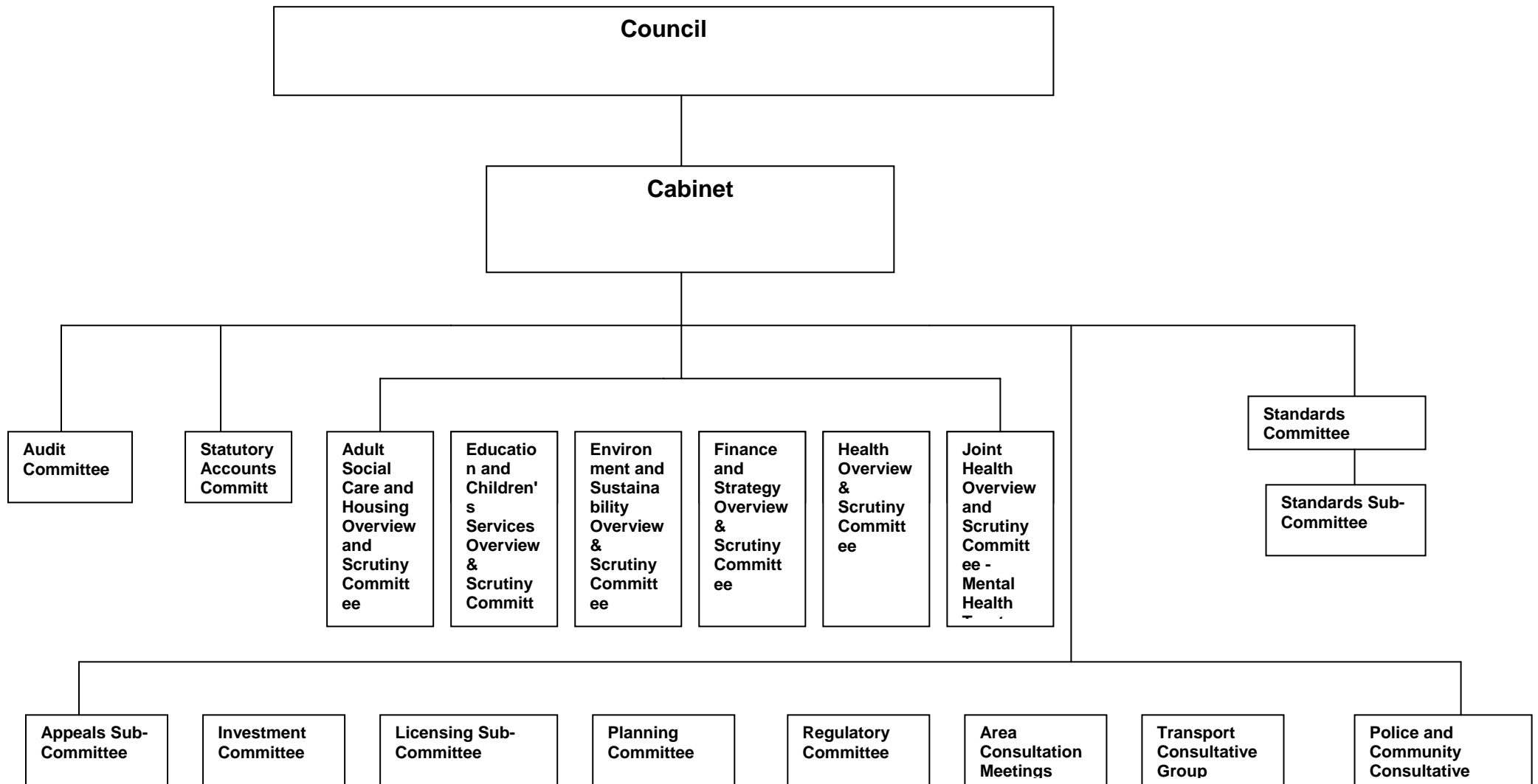
Appendix 6 section 3:

Chart-Directorates and services

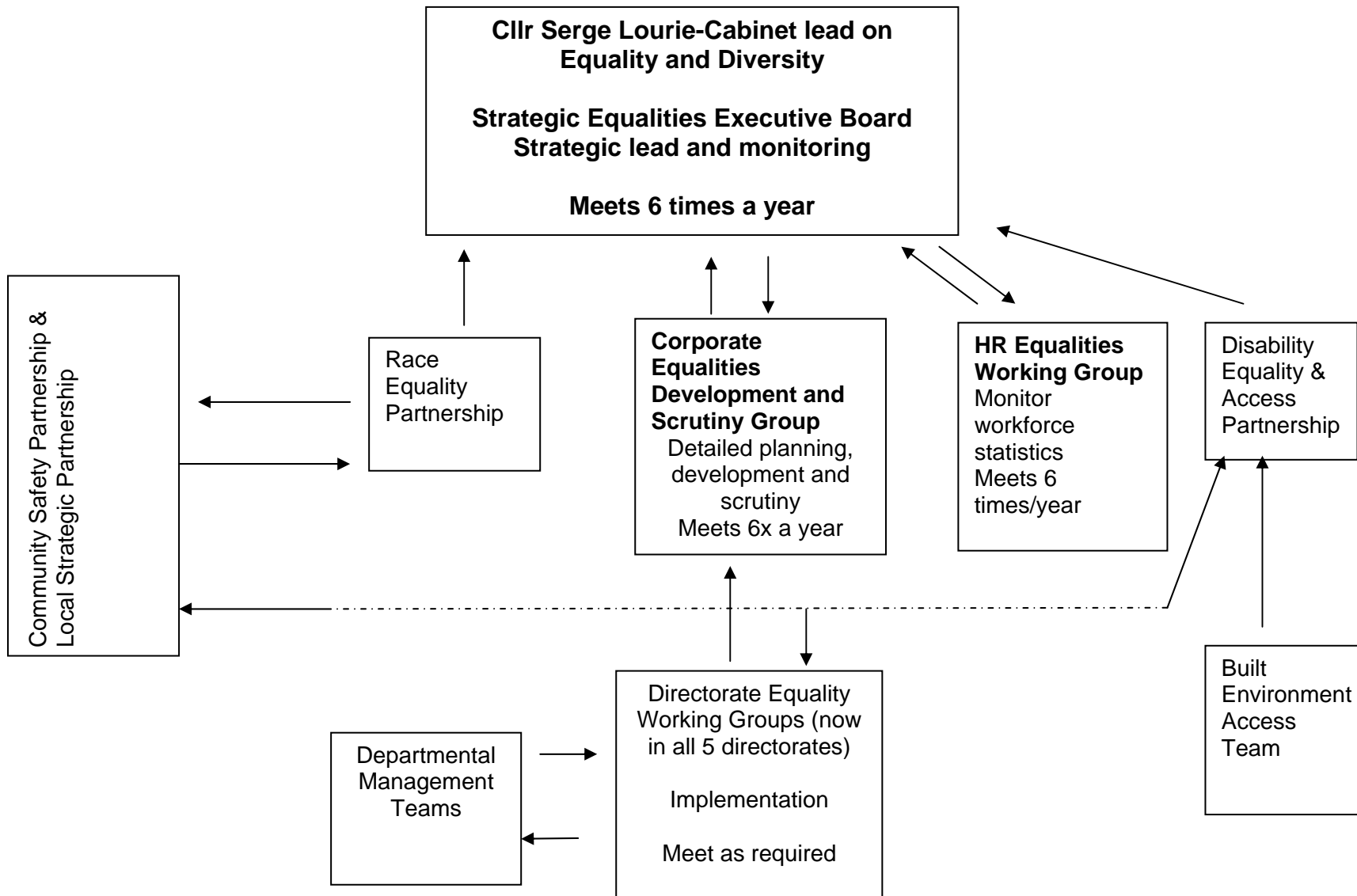


Appendix 6 section 4

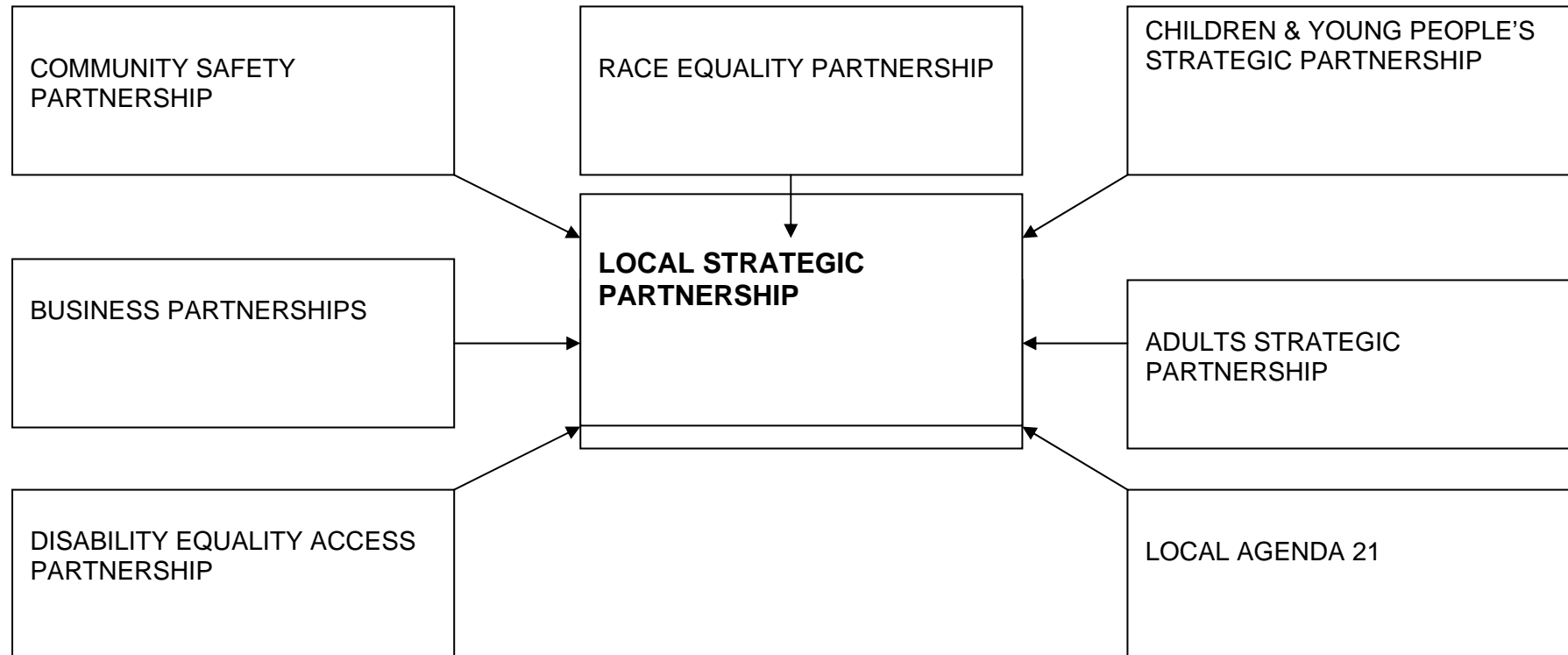
Chart-Richmond upon Thames Committee Structure-2006/7



Appendix 6 Section 7 :Equalities and Diversity Structures



**LONDON BOROUGH OF RICHMOND UPON THAMES
STRUCTURE OF STRATEGIC PARTNERSHIPS**



Appendix 6 Section 9 : Joint Commissioning Structure (Joint Commissioning Boards)

Joint Commissioning Structure

