

Mooring Byelaws Detailed Plan 1

Scale **1:2,500**

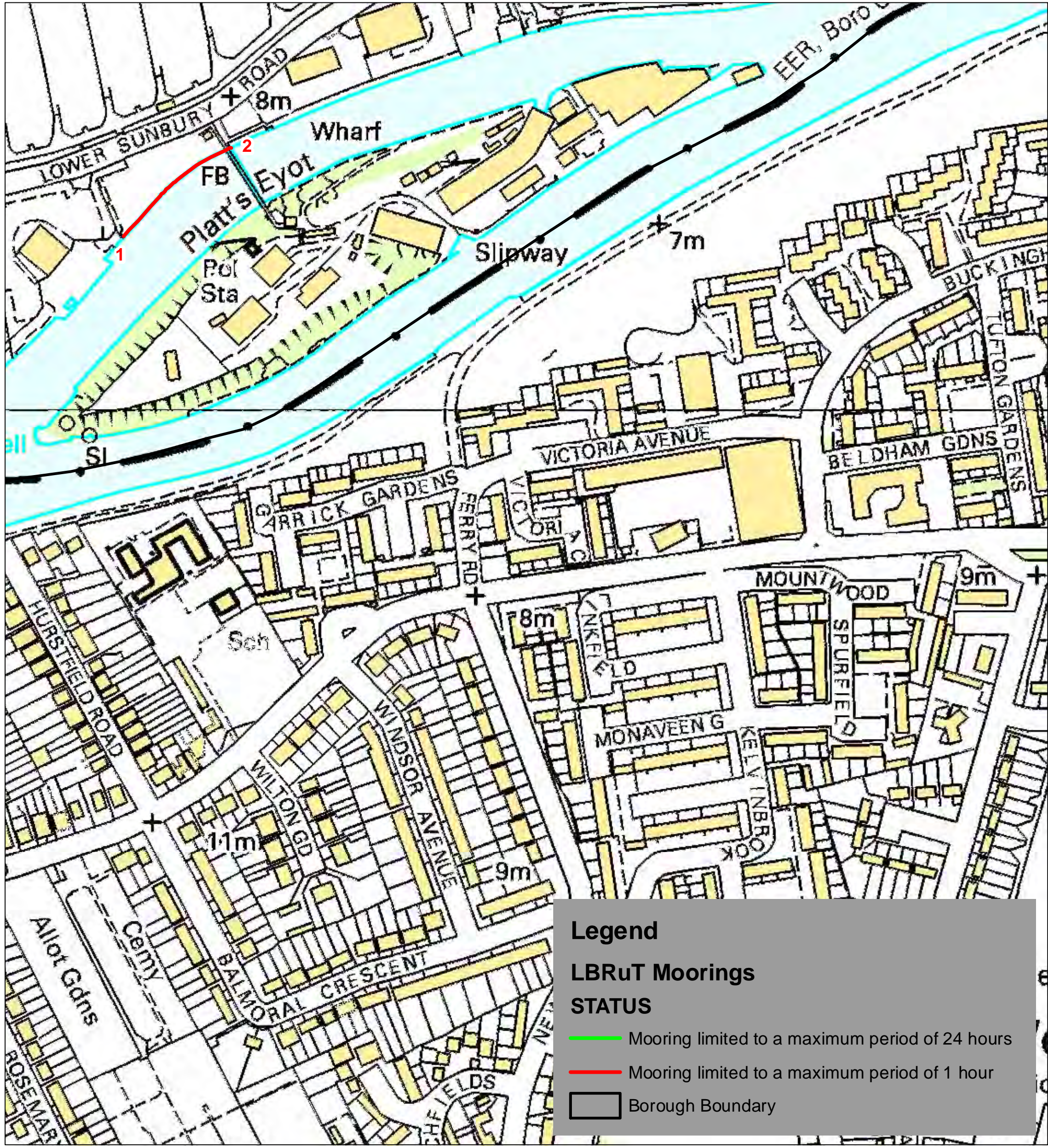
R LONDON BOROUGH OF
RICHMOND UPON THAMES
Civic Centre, 44 York Street
Twickenham TW1 3BZ
Tel: 020 8891 1411
Textphone: 020 8891 7120
www.richmond.gov.uk

Produced from our Corporate
Geographic Information System

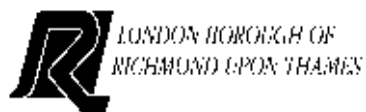
© Crown copyright and database rights 2012
Ordnance Survey 100019441



Printed: 24/10/2013



Mooring Byelaws Detailed Plan 2



LONDON BOROUGH OF
RICHMOND UPON THAMES

Civic Centre, 44 York Street
Twickenham TW1 3BZ
Tel: 020 8891 1411
Textphone: 020 8891 7120
www.richmond.gov.uk

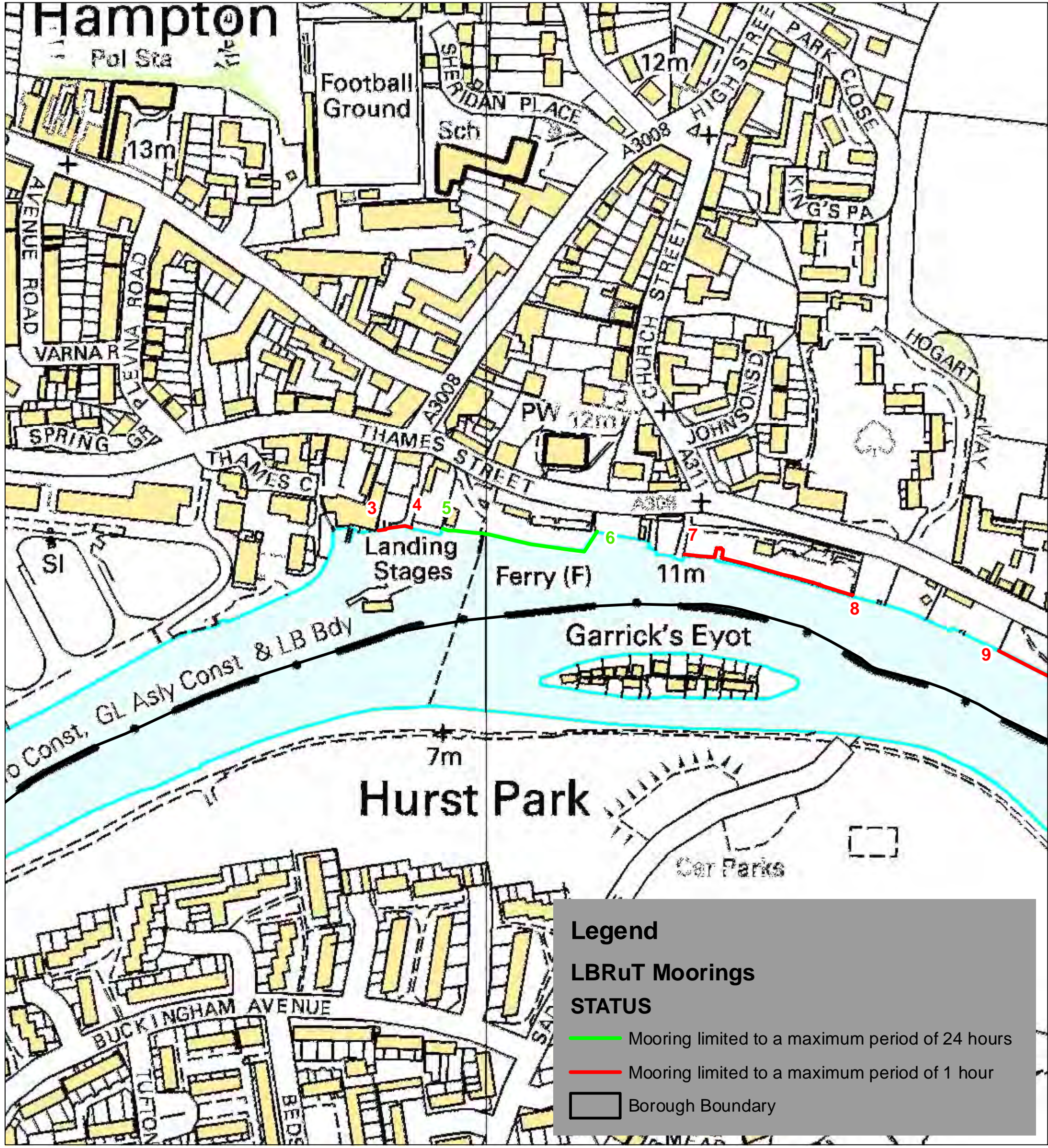
Produced from our Corporate
Geographic Information System

© Crown copyright and database rights 2012
Ordnance Survey 100019441

Scale 1:2,500



Printed: 24/10/2013



Mooring Byelaws Detailed Plan 3

Scale **1:2,500**

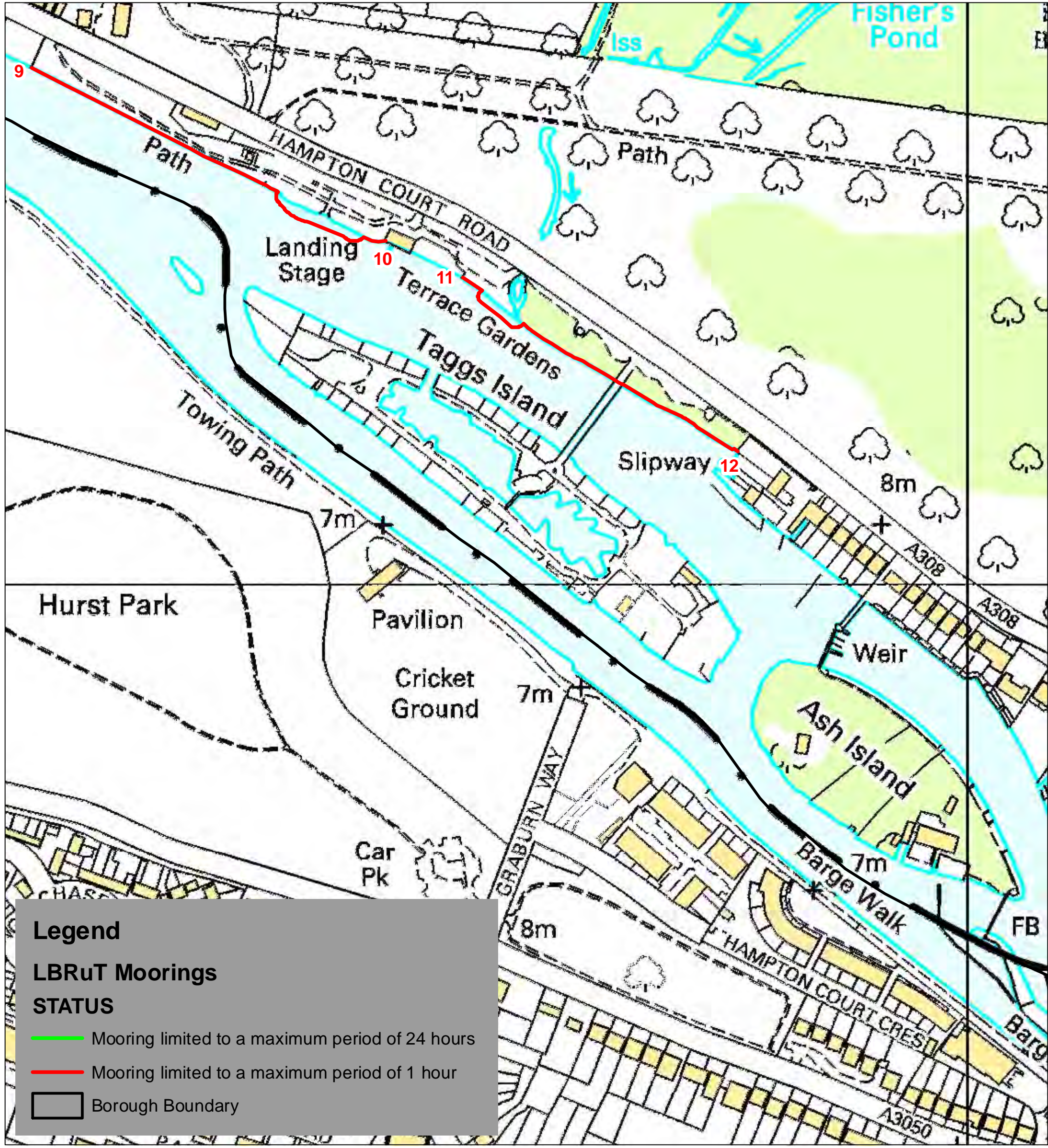
R LONDON BOROUGH OF RICHMOND UPON THAMES
 Civic Centre, 44 York Street
 Twickenham TW1 3BZ
 Tel: 020 8891 1411
 Textphone: 020 8891 7120
 www.richmond.gov.uk

Produced from our Corporate Geographic Information System

© Crown copyright and database rights 2012
 Ordnance Survey 100019441



Printed: 24/10/2013



Mooring Byelaws Detailed Plan 4

Scale 1:2,500

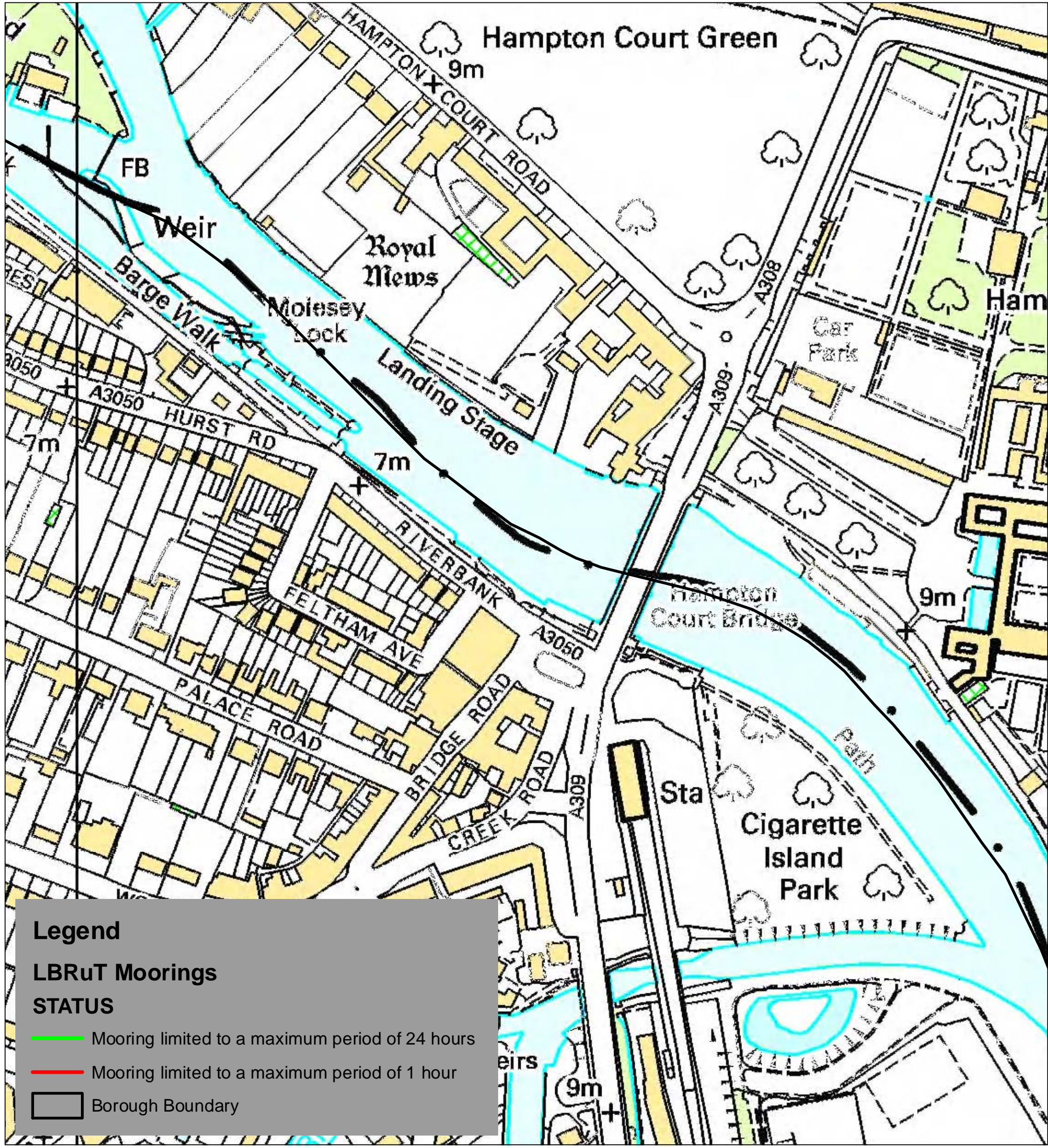
R LONDON BOROUGH OF RICHMOND UPON THAMES
 Civic Centre, 44 York Street
 Twickenham TW1 3BZ
 Tel: 020 8891 1411
 Textphone: 020 8891 7120
 www.richmond.gov.uk

Produced from our Corporate Geographic Information System

© Crown copyright and database rights 2012
 Ordnance Survey 100019441



Printed: 24/10/2013



Mooring Byelaws Detailed Plan 5

Scale 1:2,500

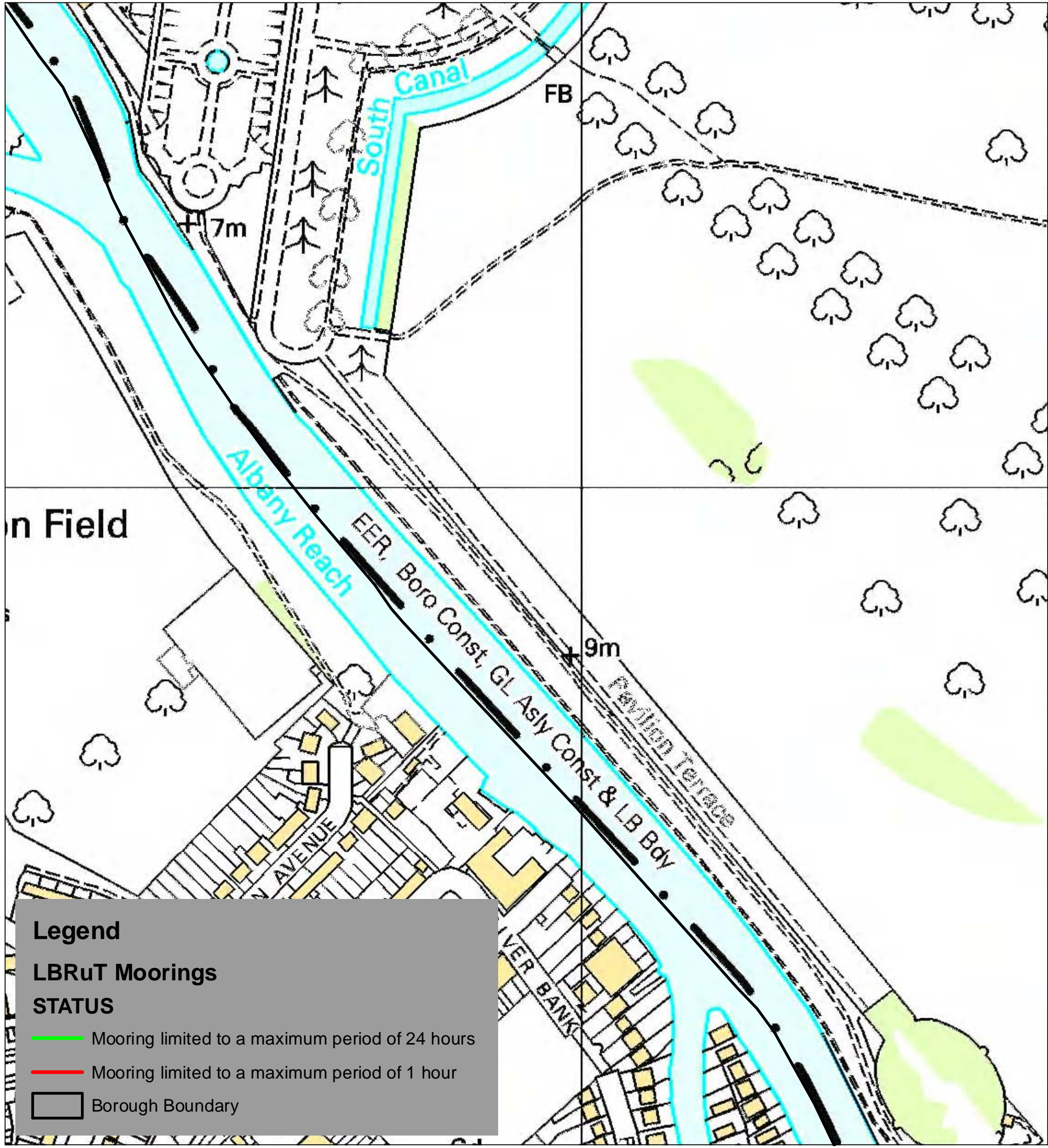
R LONDON BOROUGH OF
RICHMOND UPON THAMES
Civic Centre, 44 York Street
Twickenham TW1 3BZ
Tel: 020 8891 1411
Textphone: 020 8891 7120
www.richmond.gov.uk

Produced from our Corporate
Geographic Information System

© Crown copyright and database rights 2012
Ordnance Survey 100019441




Printed: 24/10/2013





Legend

LBRuT Moorings

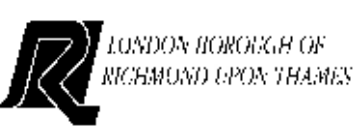
STATUS

 Mooring limited to a maximum period of 24 hours

 Mooring limited to a maximum period of 1 hour

 Borough Boundary

Mooring Byelaws Detailed Plan 6



Civic Centre, 44 York Street
 Twickenham TW1 3BZ
 Tel: 020 8891 1411
 Textphone: 020 8891 7120
 www.richmond.gov.uk

Produced from our Corporate
 Geographic Information System

© Crown copyright and database rights 2012
 Ordnance Survey 100019441

Scale **1:2,500**



Printed: 24/10/2013