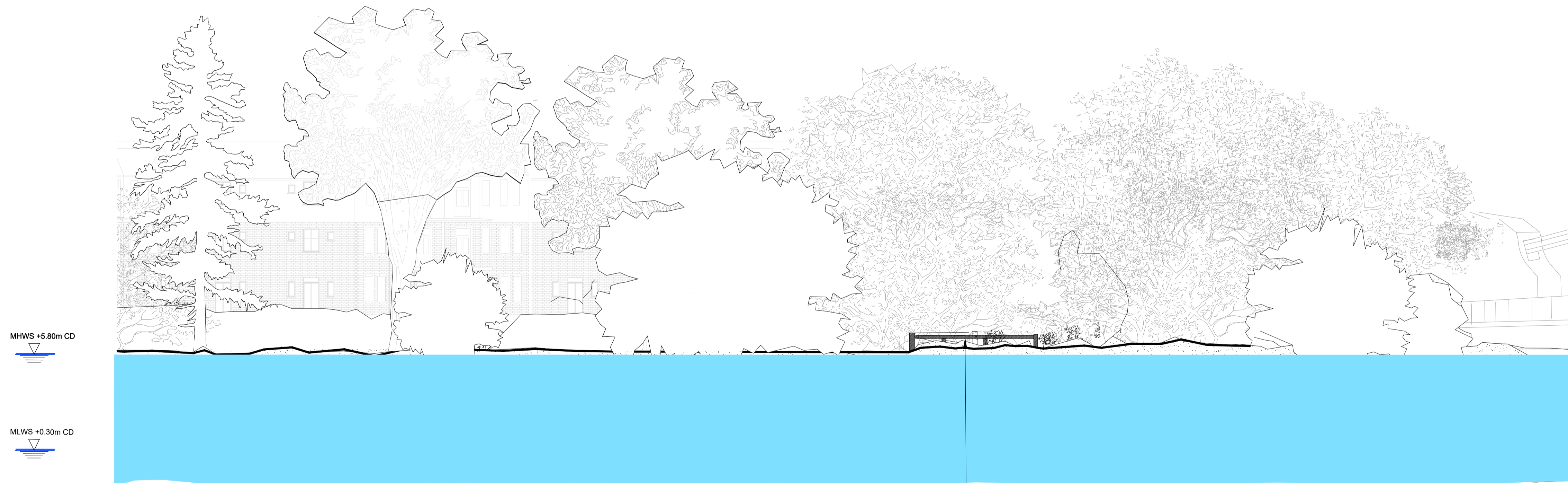


EXISTING ELEVATION - MLWS
(SCALE 1:150)

EXISTING GATE TO BE PART
REMOVED TEMPORARILY TO
ACCOMMODATE RAISED
WALKWAY



EXISTING ELEVATION - MHWS
(SCALE 1:150)

EXISTING GATE TO BE PART
REMOVED TEMPORARILY TO
ACCOMMODATE RAISED
WALKWAY



SCALE BAR @ 1:150

- NOTES:**
- DIMENSIONS ARE NOT TO BE SCALED FROM THIS DRAWING. ALL DIMENSIONS ARE IN MILLIMETRES UNLESS OTHERWISE INDICATED.
 - ALL COORDINATES ARE IN METRES TO THE OSGB36 GRID SYSTEM.
 - OFFICIAL ISSUES OF THIS DRAWING ARE IN PAPER OR PDF FORMAT ONLY. DWG FORMAT FILES ARE FOR REFERENCE ONLY.
 - THE DESIGN PRESENTED IS CONCEPT LEVEL, FOR DISCUSSION ONLY AND SUBJECT TO CHANGE.
 - TIDE LEVELS

HAT	+4.72mOD = +6.40mCD
MHWS	+4.12mOD = +5.80mCD
MHWN	+3.02mOD = +4.70mCD
MLWN	-0.98mOD = +0.70mCD
MLWS	-1.38mOD = +0.30mCD
LAT	-1.68mOD = 0.00mCD
 - TIDE LEVELS IN CHART DATUM WHICH IS 1.68m BELOW ORDINANCE DATUM.
 - TIDE DATA TAKEN FROM PLA T106 TABLES.
 - DEPTHS ARE IN METRES BELOW CHART DATUM, WHICH IS APPROXIMATELY THE LEVEL OF THE LOWEST ASTRONOMICAL TIDE.
 - THE FOLLOWING MATERIALS CAN BE ASSUMED THROUGHOUT. WHERE A COLOUR IS NOT PROVIDED, TYPICAL UNCOATED MATERIAL COLOUR MAY BE ASSUMED.

- PONTOONS**
- STRUCTURE: PAINTED BLACK STEEL U.N.O.
 - PONTOON DECK: GREY RESIN BOUND SURFACE.
 - HANDRAILS: GALVANISED STEEL.
 - SHELTER: GREY COATED STEEL WITH PERFORATED BLACK STEEL PANNELLING AND GLASS ROOF.
 - PILES AND GUIDES: UNTREATED STEEL.
 - SAFETY LADDERS AND CHAINS: GALVANISED STEEL.
 - MOORING BOLLARDS: PAINTED YELLOW STEEL.
 - GANGWAYS: ALUMINIUM.

- CANTING BROW**
- STRUCTURE: ALUMINIUM.
 - DECKING: GREY RESIN BOUND SURFACE.
 - BANKSEAT: IN-SITU CONCRETE.

- RAISED WALKWAY / RAMPING**
- HANDRAILS: GALVANISED STEEL.
 - DECK: GREY RESIN BOUND SURFACE.

- REGRAIDING**
- MOT TYPE 1 GRANULAR FILL WITH TIMBER RETAINING STRUCTURE

REFERENCE DRAWINGS:

2048-BRL-02-XX-DR-C-3001	KEY PLAN
2048-BRL-02-XX-DR-C-3022	BARNES PIER - LOCATION SITE PLAN
2048-BRL-02-XX-DR-C-3023	BARNES PIER - PROPOSED BLOCK PLAN
2048-BRL-02-XX-DR-C-3200	BARNES PIER - EXISTING GA
2048-BRL-02-XX-DR-C-3201	BARNES PIER - PROPOSED GA
2048-BRL-02-XX-DR-C-3202	BARNES PIER - EXISTING ELEVATION
2048-BRL-02-XX-DR-C-3203	BARNES PIER - PROPOSED ELEVATION
2048-BRL-02-XX-DR-C-3204	BARNES PIER - EXISTING RIVER SECTION
2048-BRL-02-XX-DR-C-3205	BARNES PIER - PROPOSED RIVER SECTION
2048-BRL-02-XX-DR-C-3207	BARNES PIER - LANDWARD WALKWAY LAYOUT
2048-BRL-02-XX-DR-C-3208	BARNES PIER - EXISTING HIGHWAY ACCESS SECTION
2048-BRL-02-XX-DR-C-3209	BARNES PIER - PROPOSED HIGHWAY ACCESS SECTION
2048-BRL-02-XX-DR-C-3220	BARNES PIER - PONTOON LAYOUT

© Beckett Rankine Ltd. All rights reserved.
This drawing, design and concept is confidential and may not be reproduced, manufactured or exploited in whole or part without written permission of Beckett Rankine Limited.



CLIENT
Uber Boat
by **thames clippers**

REV	DATE	DRN	DocChk	EngChk	APP	DESCRIPTION
P02	17.05.21	MS	NS	TKHB	TKHB	ISSUED FOR APPROVAL
P01	14.05.21	MS	OM	HP	TKHB	ISSUED FOR APPROVAL



TITLE
HAMMERSMITH TEMPORARY FERRY
BARNES PIER
EXISTING ELEVATIONS

PROJECT DRAWING No.	SCALE	S. CODE	REV
2048-BRL-02-XX-DR-C-3202	1:150	S4	P02